

## COPIER SUPPORT

Canon SERVICE SALES  
and CONSUMABLES  
08 9041 5104

SPECIALISED PHOTO PRINTING  
and LARGE FORMAT PRINTING  
jdrew@merredin.agn.net.au

# THE PHOENIX

Hon Mia DAVIES MLA

MEMBER FOR  
CENTRAL WHEATBELT

LEADER OF THE  
NATIONALS WA

LEADER OF  
THE OPPOSITION

THE NATIONALS  
for Regional WA



\$2

Thursday 7th April 2022

Issue 7

## NEW SIGNAGE AT MERREDIN RAILWAY MUSEUM

By DEBBIE MORRIS

Successful funding from Heritage Council of \$8,525 and Collgar Wind Farm of \$5,000 together with \$3,500 from the Merredin Museum and Historical Society enabled the Railway Museum Committee to engage Creative Space, an award-winning signage, interpretation and exhibition design studio, to develop a Signage Style Guide and design and install exterior signage.

Currently the Museum has lots of signs, some no longer useful or are outdated, others that double up on information, many are not consistent in design and in most cases, there are no interpretation or specific stories, which often means less people will read them.

The Signage Style Guide outlines the typefaces, colour palettes and has templates for all signs across the Museum including interpretive signage, welcome, way finding and general Museum signage, which will

ensure all signage will remain consistent in design and structure.

The Railway Museum Committee agreed on the consistent name of 'Merredin Railway Museum' and logo in June 2020, when the Merredin Railway Museum Interpretation & Design Concept Plan was

completed, as there were varying names throughout the Museum.

The new external signage, on the fence along the railway lines and in the south-east corner of the Museum grounds, was installed on Monday 28 March and is very eye-catching.



# JCB SERIES III LOADALL WHEN SAFETY & VISIBILITY ARE YOUR OUR NO.1 PRIORITY

- STAGE 3 ECOMAX ENGINE
- COMMANDPLUS CAB
- INCREASED LIFT PERFORMANCE
- AUTO SMOOTH RIDE SYSTEM
- BEST-IN-CLASS FUEL EFFICIENCY
- DUALTECH VT, THE WORLD'S ONLY 2-IN-1 TRANSMISSION

The JCB Series III Loadall feature increased lift performance, improved safety and driver comfort, and the all-new next generation Command Plus cab designed primarily with agricultural operators and owner-drivers in mind. The new cab is 50% quieter, while still factoring in key elements including visibility, comfort, control and practical demands of discerning operators.

The latest round of improvements adds class-leading cab interior space, a reduction in noise levels, climate control and all-round visibility.

Like to know more? contact our friendly team at Wheatbelt Equipment today.



**WHEATBELT  
EQUIPMENT**

**MERREDIN**

41-45 Bates St  
T (08) 6014 6000

[www.wheatbeltequipment.com.au](http://www.wheatbeltequipment.com.au)  
[manager@wheatbelteq.com.au](mailto:manager@wheatbelteq.com.au)



# CONTENTS

My Thoughts .....	5
Letters to the Editor.....	5
Court Report .....	6
From the History Room.....	6
St Mary's Primary School .....	7
COVID 19 Statistics .....	8
Library Musings .....	10
Trades .....	12
Collgar Community Calendar...	16
Astronomy .....	20
Horoscopes .....	21
Classifieds .....	22



Produced and printed fortnightly by  
**Merredin Community Resource Centre**  
 110 Barrack Street, Merredin  
 Ph: 9041 1041 Fax: 9041 1042

### Deadlines

**Articles, Advertisements  
 (including Classifieds)**  
**5pm Monday before publication date**

### Content/production

Amanda Cash  
 administration3@merredincrc.com

### Content/production

Debbie Morris  
 merredin@crc.net.au

### Advertising

administration4@merredincrc.com

### Upcoming Editions

**21st April & 5th May 2022**

[www.phoenixnews.com.au](http://www.phoenixnews.com.au)

## The Phoenix Prices

### Prime Advertising

Front	\$150
Back Full page	\$200
Ears	\$30
Front inside full	\$180
Back inside full	\$180

### Colour

Quarter	\$40
Half	\$80
Full	\$160

### Black & White

Quarter	\$30
Half	\$60
Full	\$120

### Classies (b/w)

Non business for sale	free
General lineage	50c per word

### Display per cm

Public Notice	\$10
Employment	\$5

### Trades

12 editions (each)	\$15
6 editions (each)	\$20
3 editions (each)	\$25

### Artwork

Fee	\$30
-----	------

## The Phoenix

Available at the following outlets:

BP Travel Stop

Café 56

Cutting Room

Dimensions

Go MAD

IGA

Inspire

Merredin Bakery

Merredin CRC

Merredin Flowers & Gifts

Merredin Harvest

Merredin Swimming Pool

Nextra Newsagency

Puma Roadhouse

Two Dogs Home Hardware

Wild Poppy Café

Thankyou to these businesses for their support for The Phoenix and Merredin Community Resource Centre

## ONLINE SUBSCRIPTIONS

Email [administration4@merredincrc.com](mailto:administration4@merredincrc.com)

12 or 24 editions

## Write a Letter to the Editor

Email  
[administration@merredincrc.com](mailto:administration@merredincrc.com)

Call 9041 1041

## Donate your 10 cent refund to a community group

CWA of WA (Inc) – C10240442

Merredin College P&C Association - C10349064

Merredin Community Garden Group Inc. (MCGG) - C10358700

Merredin Community Resource Centre - C10242783

Merredin Districts Lawn Tennis Club - C10322072

Merredin Hockey Club - C10330862

Merredin Railways Tennis Club - C10336486

Merredin Repertory Club - C1032349

Merredin Show - C10360791

Nangeenan Hall - C10481734

Parnana Pikurtu Wildlife Sanctuary - C10305338

St Mary's PS - C10323720



# MERREDIN SHOW WINNERS

By **AMANDA CASH**

The 2nd of April was the original date set for the 2022 Merredin Show, but with the rise of COVID in Western Australia and the advent of level 2 restrictions, the Show Committee made the decision to postpone the 2022 Show.

The Show Raffle still went ahead as planned and the winning tickets were drawn at the Merredin CRC on Saturday 2 April at 1.11pm, live on the Merredin Show Facebook page.

Merredin Show Committee Chairperson, Clayton Murray, drew the lucky winners out of the barrel, with Vice Chairperson, Martin Morris reading out the winners.

Sandy Fleay was the lucky recipient of the First Prize of \$5000 with ticket number 063.

Second Prize of \$2000 went to Lesley Watson with ticket number 119, and Third Prize of \$1000 went to the Ashmore Family with ticket number 424.

Congratulations to the winners and thank you to everyone who bought a raffle ticket and supported the Merredin Show.

The Virtual Stallholders event was also held on Saturday, with all customers buying from any of the online stalls going into the draw to win a fire pit, generously made and donated by Show Chairperson, Clayton Murray. The lucky winner of the fire pit was Jhuna Pante, a customer of Marie Bartlett's

Tupperware stall, and a new resident to Merredin.

Merredin Fine Arts Society coordinated this year's colouring and drawing competition, which was to be displayed and judged at the Show, but with no Show, the winners were announced on Saturday 2 April:

Kindy & PP - 1st Reece Hooper



Clayton Murray and Martin Morris, drawing and announcing Merredin Show 2022 Raffle Winners



Raffle First Prize Winner Sandy Fleay

Year 1-3 – 1st Lucas Bartlett, High Commendation Stevie Atford

Year 4-6 – 1st Chloe Bartlett, High Commendation Camee Roberts

Drawing Competition – High Commendation Amelia Spark.

Congratulations to all prize winners!



Jhuna Pante, Winner of the Virtual Stallholders Raffle, with Clayton Murray.

# MAMA STITCH: STORIES ABOUT MERREDIN MUMS

By **OLIVIA MELLOR, CUMMINS THEATRE**

Talented storytellers and musicians, Georgia King, Mark Storen, Holly Garvey, and Tom Garvey farewelled the Cummins Theatre last Friday, with their season finale of Mama Stitch.

The visiting artists spent two weeks in Merredin collecting and recording stories from a selection of residents before transforming the anecdotes into a series of exquisite performances celebrating mums and the special place they hold in our hearts.

The stories were presented as Headphone Verbatim, which involved actors Georgia and Mark wearing headphones and delivering the recorded

interviews as they heard them – live, in character, and without embellishment. The pair were extraordinary, as they seamlessly captured the essence of the tales that they were recounting.

The stories were underscored with original music and songs that had been inspired by the

recollections and memories shared.

Warm, funny, wistful, and at times confronting, there was no shortage of heart in this evocative and touching theatre production that left audience members reflecting on relationships and moments shared with their own mothers.




**Merredin**  
9am - 1pm  
Monday - Friday



# Letter to the Editor

## LINKS TO SYDNEY II

On picking up a copy in Merredin of The Phoenix dated 24<sup>th</sup> March 2022 last Friday, 1<sup>st</sup> April, noting CRC hosting their annual Thank a Volunteer event at the Cummins Theatre for a performance of Sydney II Lost and Found, performed by Theatre 180.

Following is a couple of Naremben connections to the Sydney. In 1941 many wheatbelt towns like Naremben were barely thirty years settled, were experiencing a second World War, had been through the Great Depression and the Spanish flu worldwide influenza outbreak of 1918-19 which claimed more lives than World War I.

You have to admire the generations of the first half of last century.

Lionel Rothbaun - only son, farming family – 6 miles approx. from Naremben – Wadderin. John Hall possibly owns property. Lionel's father was the Roads Board Chairman and there is Rothbaun Street in Naremben.

Frank Hardingham from Naremben who was in the Air Force had a few drinks with Lionel before Sydney left Geraldton (Geraldton like Cunderdin was a training centre for RAAF).

Clarrie Buckinham – only son, farming family – north of Naremben, Ross Roaches Road. Also Hostel in main street (IGA carpark) – French mother.

I do not know the average age of the Sydney crew, but when you think many could still be alive today, gives you an idea what giving your life for your country means.

**Bob Morton  
Naremben**

# My Thoughts

## INCREASES IN COST OF LIVING

We all know the struggle of getting good, decent produce with COVID introducing shortages and panic buying in the last two years. However, in more recent times yet another factor has been thrown into the mix - Price. As grocery prices continue to rise, and don't seem to be slowing down any time soon, my thoughts have been consumed with the question; how on earth are families affording to feed themselves, or even single person households for that matter? Sadly, it is becoming cheaper to eat fast food than to put a cooked meal up on the table (maybe not in Merredin but definitely in the city).

I now live in Perth so my constant battle with the weekly food shop is nothing compared to what Merredin residents face, I have heard the complaints from many friends in town. However, this is a national crisis, and we are all facing an increased cost of living. What is the answer? It's not filling up the shopping trolley with frozen packets full of processed food that's for sure.

I have listed out a few suggestions that I have found help me keep my grocery bill down, I also like to make a game out of it, how much food can I get from my weekly shop, can I beat my Personal Best? Some people don't like to cook

and that is a personal choice, talk to me in 20 years and I may also be in that same boat.

I have found planning out your meals to be handy, that way you are only buying what you will be using that week. Before you plan make sure your meals include vegetables that are in season, readily available, and not too expensive.

Mince is your friend you can do a lot with a kilogram of mince, vegetables bulk out most meals too and are not only good for you they make the expensive meat go a lot further. If in doubt, add an egg to the top of your meals for extra protein and to make the meat go even further.

I have also found savings in scaling back your ingredients (there are only so many flavours you can taste at a time after all!), keep your meals simpler and picture what the plate will look like once it's served up, do you really need an additional side... probably not. It's called the KISS method.

Don't EVER go shopping when you are hungry or even worse - Hangry - this is just a disaster and you will fill your trolley with treats and snacks that you can open in the car on the ride home, even when you live 2 minutes from IGA, we have all been there.

My biggest piece of advice is to have fun and experiment in the

**Jessie  
Johnson**



kitchen. I have never followed a recipe in my life, my mum taught me to cook with what is available and already in the fridge. There is also nothing wrong with making a meal out of leftovers or planning strategically so that your leftover rice from Monday's meal becomes Tuesday's fried rice with an egg on top. See how far you can stretch your weekly shop, which works great for your purse strings but also for staying away from the shops till you absolutely need to go back.

Finally, if you are ever in doubt Pinterest or google easy weekday meals - not for the recipe because you are smart enough to work it out - but for some inspiration and to change it up.

There may be one silver lining to the increased cost of living in that we will be less likely to throw food away, use up every scrap you have. Turn back the clock and cook like the generations before us, where nothing went to waste, and meals were a simple but nutritious affair. One note here please don't cook everything till it's grey and mushy... let's learn from those of yesteryear but do it better!



**17th March 2022****Perth Central Law Courts**

Jason Caruana appeared on charges of possessed drug paraphernalia in or which there was a prohibited drug or plant, possessed a prohibited drug and no authority to drive – suspended (other than fines suspension). He was remanded to appear in Newman 12th April 2022.

**22nd March 2022****Perth Central Law Courts**

Melville Verhoeven appeared on charges of disorderly behaviour in public, drove with prescribed illicit drug in oral fluid or blood, possessed a prohibited plant, being armed or pretending to be armed in a way that may cause fear and assaulting occasioning bodily harm. He was remanded to appear in Perth on 3rd May 2022.

Brandon Welshman appeared on a charge of aggravated grievous bodily harm. He was remanded to appear in Perth on 17th June 2022.

**24th March 2022****Kalgoorlie Courthouse**

Trevor Jetta appeared on a charge of no authority to drive (disqualified from holding or obtaining). He was remanded to appear in Kalgoorlie on 21st April 2022.

**28th March 2022****Northam Courthouse**

Kerry Kordell Smith appeared on a charge of assault occasioning bodily harm. He was remanded to appear in Northam on 11th April 2022.

**29th March 2022****Northam Courthouse**

Lennard Wallam appeared on

charges of assault occasioning bodily harm and aggravated home burglary and commit. He was remanded to appear Perth on 24th April 2022.

Tiara Hooker appeared on a charge of common assault in circumstances of aggravation or racial aggravation. She was remanded to appear in Rockingham on 9th May 2022.

**5th April 2022****Northam Courthouse**

Allan Hayden appeared on charges of unlawfully assault and thereby did bodily harm with circumstances of aggravation, breach of bail

conditions, assault occasioning bodily harm and 22 counts of breached a family violence restraining order. He was remanded to appear in Merredin on 7th April 2022.

**Perth Central Law Courts**

Tom Wood appeared on charges of common assault in circumstances of aggravation of racial aggravation, damaging property, assault occasioning bodily harm, and two charges of unlawful assault and thereby did bodily harm with circumstances of aggravation. He was remanded to appear in Perth on 28th July 2022.

## From the History Room

### By ANITA METCALF, Merredin Library

The following snippets appeared in the local APRIL newspapers of the time.

3rd, 1952: Merredin Junior High School had increased its enrolments from 435 to 512 and that had stressed the urgent need for a 5 year High School at Merredin. More than 200 meals a day were served at the Oslo lunchroom.

14th, 1965: Civic Blues bowling club def. KTY Whites to win the North Eastern Districts League competition. Civic Blues have played consistently all season, not losing one game. This creates a record for the Civic Club and could be hard to equalise in the league.

27th, 1976: The Trayning Lions Club was sponsored by the Mukinbudin Lions Club, with the Charter Night in the Trayning Hall on June 19.

2nd, 1981: Lindau Ford last Friday released the new fuel-efficient, 4 cylinder Laser to the area. The Laser is the first of a new generation front-wheel drive cars to be assembled in Australia.

15th, 1987: The old Muntadgin Hall has been demolished after serving the community for nearly 60 years, it was built in 1928. The floor of the Hall originally came from the Embassy Ballroom in Perth.

18th, 1990: Rainfall for the month of March was higher than average. Southern Cross has the highest reading of 58.2mm as opposed to their average of 21mm.

Merredin Research Station 42.7mm (21), Koorda 50.4mm (21), Mukinbudin 39.4mm (18), Nungarin 44.11mm (20), Westonia 47mm (22), Naremben 40.6mm (20) and Bruce Rock 39.4mm (21).

10th, 1991: The Rhythmaires old time dance band will be holding a 30<sup>th</sup> anniversary ball in Kellerberrin on April 13. The band was formed in 1961 with Len & Audrey Harris and Clarey Howlett. In 1962 Malcolm Alcock and his trumpet played until 1966. Syd Lowe replaced Clarey on drums in 1962. In 1967 Bob Hendry Jr. joined as trumpeter followed in 1971 by Gordon Johnson.



**MCKENZIE**  
FAMILY FUNERALS  
MONUMENTAL WORKS

## FUNERAL DIRECTORS AND MONUMENTAL WORKS

MEMBERS OF THE AUSTRALIAN  
FUNERAL DIRECTORS ASSOCIATION

PHONE: 08 9041 1054 · MARK: 0438 050 692

TONI: 0401 481 561

EMAIL: MARK.TONI.MCKENZIE@GMAIL.COM  
WEBSITE: MCKENZIEFAMILYFUNERALS.COM.AU  
10 FIFTH STREET, MERREDIN WA 6415

f McKenzieFamilyFunerals @ merredin\_monumental

TA5747836

# END OF TERM 1 ACTIVITIES

## Dress Up

St Mary's looked like a zoo on Wednesday, 30 March, as all the students dressed up in an array of animal costumes to raise money for our Sustainability Initiatives, which we will begin next term.



## Assembly

The Year Six students presented an entertaining assembly item called 'Giving Up Things'. The item explored the tradition of fasting during Lent and the temptations that are waiting for everyone.

# MERREDIN CRC FAREWELLS KIRSTY ROCHFORD

By **DEBBIE MORRIS**

In January 2015 moving from Innisfail Queensland, Kirsty Rochford and joined Debbie Morris and Corey Tucker at the Merredin CRC.

Kirsty's first role was Coordinator of the Merredin Show which she continued over her 7 years at the CRC. Kirsty's passion, creativity and attention to detail for community events has always shone through and assisted making the Merredin Show an amazing event.

The CRC were pleased to be able to offer support for Kirsty the opportunity to study for a Diploma in Events Management in 2020, which she successfully completed – a great achievement and something that has also been very beneficial for the CRC events and activities as well as the Merredin Show.

Kirsty's creative and 'willing to do things differently' has shone out through lots of activities – Belly Dancing, Tai Chi, Merredin Markets, Thank a Volunteer

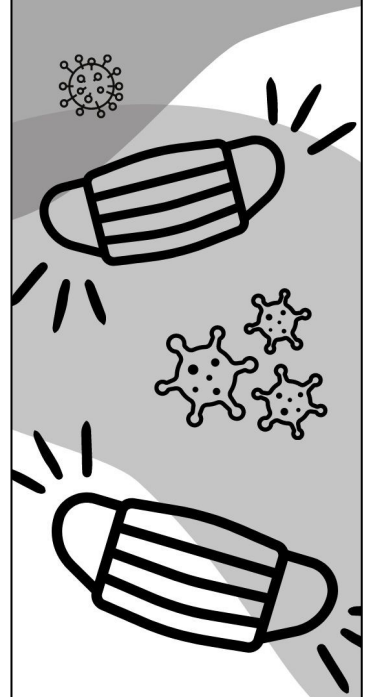
dinners and events, Seniors Luncheon, Santa Photos and lots more.

In addition to events, Kirsty's professional approach to all aspects of her work is commendable but one in particular has been the production of The Phoenix newspaper for the past 6 years.

The Committee and Staff at the CRC thanked Kirsty for everything she has contributed to the CRC and wished her well, for her future at a morning tea this week.



## Free Masks at the Merredin CRC!



Thanks to Department of Communities, Foodbank WA, WACOSS & Linkwest



# COVID-19 coronavirus

## COVID-19 WA Statistics

As at 6 April 2022

Tested 3,113,324

Confirmed Cases 219,165

Recovered 172,396

Deaths 72

Active cases in WA 46,697

COVID-19 in Australia

Vaccinations:

1 Dose 22,182,298 (86.5%)

Fully Vaccinated 22,291,087 (82.9%)

Booster 12,972,174 (50.5%)

WA—Cases 219K—Deaths 72

ACT—Cases 81,821 —Deaths 43

NSW—Cases 1.94M—Deaths 2,487

NT—Cases 52,334—Deaths 36

QLD—Cases 820K—Deaths 756

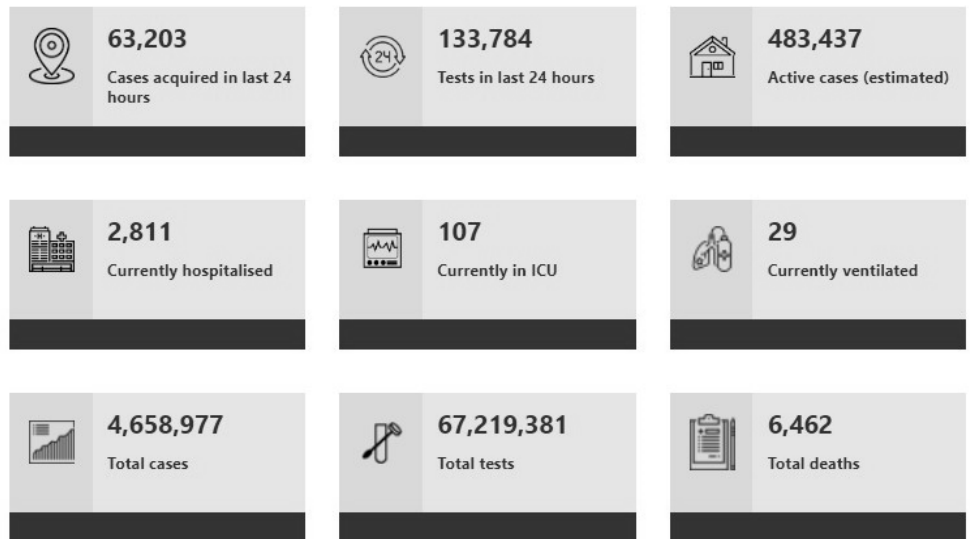
SA—Cases 291K—Deaths 270

TAS—Cases 101K—Deaths 32

VIC—Cases 1.34M—Deaths 2,766

We're all  
in this  
together.

## AUSTRALIA'S COVID STATISTICS



## EASING OF PUBLIC HEALTH MEASURES IN SCHOOLS FOR TERM 2

Restrictions at Western Australian schools will be eased for the start of Term 2, in-line with the latest health advice.

Additionally, one million more Rapid Antigen Tests (RATs) will be distributed to public and non-government schools to use where required.

WA's easing of public health measures for schools include:

- Parents allowed on school sites for
  - outside school pick-up and drop-off
  - face to face parent-teacher meetings,
  - attending year group assemblies,
  - volunteering in roles outside of classrooms e.g. canteen, and uniform shop
  - attending infrequent special events (in line with community venue capacity and density limits);
- In-school special events bigger than a class size can be held with masks and physical distancing;
- Single year-group assemblies can be held in line with mask requirements;
- Parents and carers can visit boarding schools and other residential facilities, with proof of vaccination, mask wearing and physical distancing;

- Parents are allowed to spectate at indoor and outdoor sporting events, performances and other interschool events with masks and physical distancing; and

- Gatherings of parents/carers can occur (e.g. P&Cs) with mask wearing.

Parents and carers attending school sites must wear a mask and physically distance where possible.

Critical worker protocols and mask-wearing requirements for students in Year 3 and above at public indoor settings remain unchanged.

School camps remain postponed due to the COVID-19 transmission and disruption to learning risks. The School Camps COVID-19 Assistance Package is continuing to support school camp operators, and encourage public schools to undertake day camps.

In response to changing circumstances, the Chief Health Officer has also reduced schools' role in contact tracing and reporting. Effective immediately, schools are only required to identify close contacts within their school.

 **COVID** 

**Certificate too big?**

**Come to the Merredin CRC and get it shrunk!**

**We can shrink your COVID Certificate to card size and laminate it for only \$2.30!**

**Roll up for WA**

COVID-19 Vaccination





# MERREDIN CHURCHES FRATERNAL BLESSING OF THE ROADS

By **MERREDIN CHURCHES  
FRATERNAL**

Easter is a time for coming together and this year the Merredin Churches Fraternal is participating in the WALGA RoadWise *Blessing of the Roads* campaign and asking the community to accept that road trauma is preventable.

By accepting this, we are challenging the belief that road trauma is inevitable and in turn, generating support and involvement in local road safety initiatives.

“Road safety is about working together, and the *Blessing of the Roads* campaign is reminding us that we should not accept that anyone should die or be seriously injured on our roads.”

This Easter weekend, the Churches Fraternal are asking everyone to think about the number of deaths and serious injuries they are willing to accept and that we can achieve zero.

Remember:

As a road user, be responsible for your actions when using the roads and obey the road rules.

As a local car dealer, disseminate positive consumer information about safety features that can help increase the uptake of safe cars.

As a Local Government, think about how to design or retrofit the local road system to accommodate driver error - people just making mistakes.

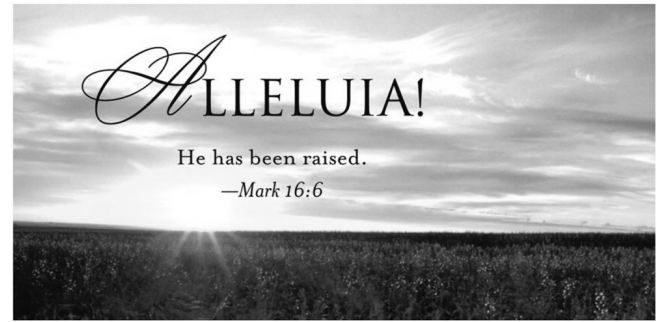
The only acceptable number of fatalities and serious injuries on our roads is zero.

On Thursday 14<sup>th</sup> April at 10 am the Merredin Churches Fraternal will be hosting a *Blessing of the Roads* event to showcase local road safety initiatives and how the community can get involved to show that by working together, we can achieve a future of zero deaths and serious injuries on our roads.

The event will take place at Pioneer Park.

For more information about the Churches Fraternal's *Blessing of the Road* event, contact Laura Cruz on 0429108241.

To find out more about the *Blessing of the Roads* campaign, visit the RoadWise website, [www.roadwise.asn.au](http://www.roadwise.asn.au).



On Easter Morning 17<sup>th</sup> April  
6am at the Reflection Pond  
(Long Tan Memorial) in Roy Little Park  
Ecumenical gathering of prayer & praise.  
BYO Chair and Blanket

**TOGETHER in CHRIST!**



**Merredin Churches Fraternal**

## Tales from the Train

By **LADY RANTHAM**

A short one for you today. On the train, if you should happen to look about you, you will see a chiropractor's dream of a hundred necks bent over phones and tablets. But you miss so much of life's cabaret that is paraded before the screen of the train window if you only happen to glance up

occasionally. My entire carriage missed the sight of a short Japanese gentleman, clad in an immaculate white three-piece suit standing defensively on the side of the freeway, by his enormous Kawasaki (not a euphemism!); obviously disputing quite passionately with the policeman that helmets mess up his hair.

You are part of our community  
Share your story Call 9041 1041

## Benefits Of MEDITATION



Reduces pain and enhances the body's immune system.



Reduces feelings of depression, anxiety, anger and confusion.



Increases blood flow and slows the heart rate.



Provides a sense of calm, peace and balance.



Helps reverse heart disease.



Helps control thoughts.



Increases energy.



Reduces stress.

## UNPACK THE TRAVEL T&CS

By **BOUYDEN MCKENZIE**,  
 Senior Regional Officer,  
 Consumer Protection

For the first time in a long time our borders are open and many Western Australians will be looking forward to long-awaited trips or family reunions.

While we understand many consumers will be keen to make interstate or overseas travel plans, it is important to have realistic expectations given the ongoing impacts of the COVID-19 pandemic.

When the cancellation of travel services is due to COVID-19 government restrictions, consumers may not automatically be entitled to the same remedy options as they would be in normal circumstances under the consumer guarantees of the Australian Consumer Law.

That's why it is so important for consumers to make sure they read and understand the terms and conditions (T&Cs) for each part of their travel plans, so they are fully aware of their options if their journey is impacted by COVID-19 related issues such as border closures, restrictions or isolation requirements.

Given some bookings may not be flexible or refundable, understanding what the T&Cs actually mean before accepting them has never been more important.

Tips to 'unpack the T&Cs' so you can look before you book include:

- Understand the terms and conditions for each part of the trip (flights, accommodation, transfers, tours, car hire) especially in relation to COVID-19 cancellations or delays.
- Make sure you check and get written confirmation about the refund policy.
- Look for flexibility to make changes.
- Consider booking directly with accommodation providers or airlines if this provides more flexibility.
- Take out travel insurance, but be aware of coverage limitations, especially in relation to government bans.
- Stay informed about COVID-19 travel rules both at home and at holiday destinations, including any vaccine mandates, as these may be subject to sudden changes.
- Have reasonable expectations, travel and hospitality have changed because of the impact of COVID-19 on supply chains and staffing.

More COVID-19 related travel information is on our Frequently Asked Question page at [www.dmirs.wa.gov.au/cpccovidfaq](http://www.dmirs.wa.gov.au/cpccovidfaq). Travel consumers experiencing issues with getting a remedy for a cancelled or postponed booking can lodge a complaint on our website at [www.consumerprotection.wa.gov.au](http://www.consumerprotection.wa.gov.au)

## Library Musings

By **WENDY PORTER, MERREDIN LIBRARIAN**

It's nearly Easter time. Doesn't time fly? Here is a sampling of new items at the Merredin Library.

Have you ever had a feeling that something will work, or not work? Do you listen to your intuition, or put it down to coincidence? *'You already know'* by Helena Jacobs show you how to access your intuition and find your divine life path. Learn how to see pitfalls in your life and develop your intuition so that you can be a 'spiritual ninja.'

Winter coming often has people getting into gardening. *'New vegetable garden techniques'* by Joyce Russell shares her expert skills and techniques to help you maximise your harvests, time, effort, and budget. Learn how to create a year-round supply and improve the way you grow more than fifty crops.

Try twenty-three special projects from digging 'lazy' beds to saving your own tomato seeds.

One of the big catchphrases of the last few years is being 'mindful.' In these times of great stress, being mindful helps to reduce stress levels, increase concentration and creativity. *'The mindful maker'* by Clare Youngs will show you techniques such as punch needling, latch hooking, sashiko stitching, weaving, macrame and quilting, alongside how to experience a feeling of 'flow,' being present and noticing the tactile nature of the piece you are working on. Not only will you learn new techniques, but you will also feel better about yourself doing so.

Remember to ask staff if you can't find what you are looking for. Library staff are always happy to help. Ask about what e-resources are available for free – including the new site Hoopla.



Marzocchi Contracting

### VACATE CLEANING

*Is our specialty and we cover the lot ..that's both interior and exterior!*

*Windows and flyscreens • Deep cleaning carpets • Drapes • Steam cleaning tiles • Oven cleaning • Washing walls, ceiling, doors • light fittings/vents lawn mowing • weeding • rubbish removal • tree lopping • siteworks • fence repairs*

Anita Marzocchi  
 0459 405 333

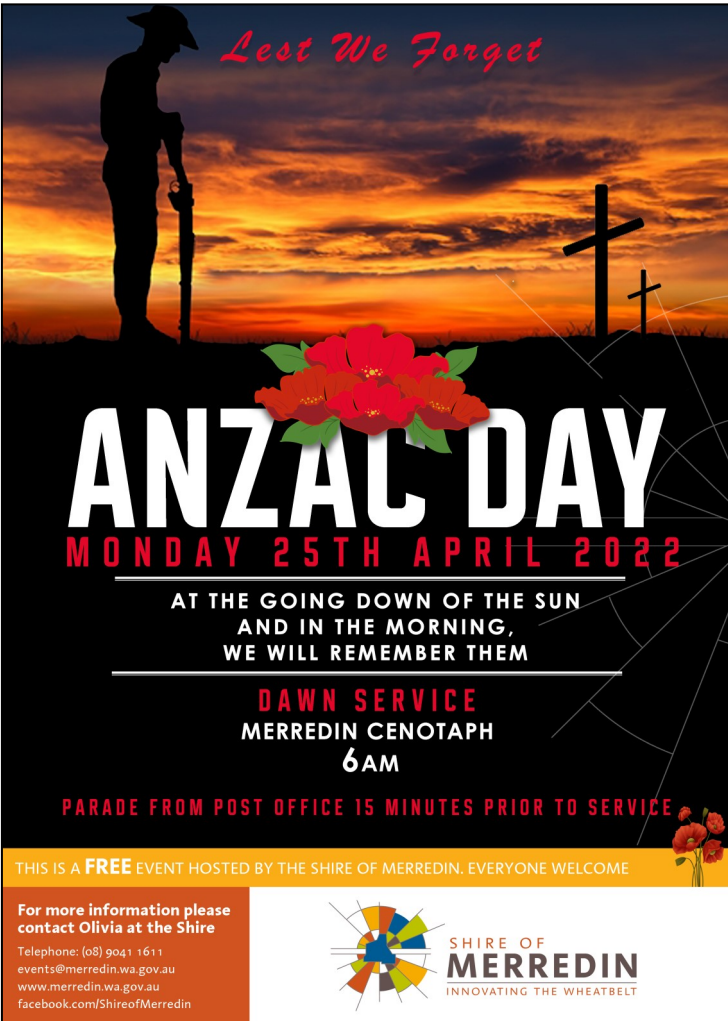
Email: [marzocchifamily@hotmail.com](mailto:marzocchifamily@hotmail.com)

P/L Insurance . Criminal Clearance . WWC . ABN: 16637422118

CALL 9041 1041

DUBBING @  
 MERREDIN CRC

*Lest We Forget*



# ANZAC DAY

**MONDAY 25TH APRIL 2022**


AT THE GOING DOWN OF THE SUN  
AND IN THE MORNING,  
WE WILL REMEMBER THEM

**DAWN SERVICE**  
MERREDIN CENOTAPH  
**6AM**

PARADE FROM POST OFFICE 15 MINUTES PRIOR TO SERVICE

THIS IS A **FREE** EVENT HOSTED BY THE SHIRE OF MERREDIN. EVERYONE WELCOME

For more information please contact Olivia at the Shire  
Telephone: (08) 9041 1611  
events@merredin.wa.gov.au  
www.merredin.wa.gov.au  
facebook.com/ShireofMerredin



**SHIRE OF MERREDIN**  
INNOVATING THE WHEATBELT

Yilgarn Community Support Group  
Proudly presents the

## Yilgarn Ladies Day

May 7, 2022  
commencing at 10.30am  
Senior Citizens Centre

- Guest Speakers
- Light Lunch
- Stalls

if you are interested in holding a stall at the Ladies Day, please contact Lisa Boso at [ycsg.inc@gmail.com](mailto:ycsg.inc@gmail.com)

\$20 per person - tickets on sale @  
<https://www.trybooking.com/BYELM>

"There is no force more powerful than  
a woman determined to rise"




Suppliers of Agricultural and Industrial Gypsum since 1978

## Kalannie HIGH QUALITY / SCREENED

Typical analysis: **Calcium 22.8% Sulphur 17.8%**

Now also operating from **Lake Cowcowing**  
**65km NE of Dowerin**

Call Daniel Nixon  
 0429 662 004    
  9666 2004

[www.gypsumsupplies.com.au](http://www.gypsumsupplies.com.au)

**Book your next meeting at the Merredin CRC**  
Affordable room bookings - delicious catering options available  
Call 9041 1041 for more information



**BEAUTICIAN**



**Kate's**  
TAN & BODY  
Tanning & Waxing Specialists

**CALL NOW TO BOOK**  
**0427 412 263**

**CARPENTER**



**T & B Construction**

Over 30 years experience in carpentry and all aspects of building work, specialising in roofing/ Colourbond, flooring, decking, pergola's, gutters, downpipes and gazebo's.

For all your remodelling and extension needs, we offer free quotes and design advice. Quality workmanship guaranteed. Fully insured.

A.B.N: 90 648 851 048  
Office: 9041 1295 or call Tom on  
Mobile: 0487 434 210  
Email: [t.b.construction8@gmail.com](mailto:t.b.construction8@gmail.com)

**COMPUTER TECH SUPPORT**



**STEVE WISE**  
ABN: 87 897 587 331

**COMPUTING TECHNICAL SUPPORT**

- COMPUTER REPAIRS
  - NETWORKING
  - NEW COMPUTERS
  - INFECTION & SECURITY
  - DATA RECOVERY FROM FAILED DRIVES
  - ANNUAL SERVICING & MAINTENANCE
  - ADVICE & TRAINING
- MOB 0488 979 644  
MERREDIN WA  
[stevewise6415@gmail.com](mailto:stevewise6415@gmail.com)
- All work confidential & guaranteed*

**DENTIST**



**BRUCE ROCK DENTAL**  
DR RAM RAJAGOPALAN BDS<sub>SCWA</sub>  
*Caring Quality Dentistry*

- \* General dental care for all ages
- \* Crowns, Root Canal & Dentures
- \* Accredited Medibank Provider
- \* Provider for all health funds
- \* HICAPS direct claims
- \* Veterans Gold Card provider
- \* Subsidy treatment for Aged Pensioners

SERVICING THE WHEATBELT SINCE 1992  
TEL 9061 1954

Located at 16 Butcher St., Bruce Rock -  
inside the Health Centre  
Surgery usually open Mon, Tues, Wed and  
2nd THURS BY APPT

**EARTH MOVING**



**SMITH EARTHMOVING PTY LTD**

**BULLDOZING • GRADING • CIVIL WORKS**

KELLERBERRIN WA • 0428 458 121  
[www.smithearthmoving.com](http://www.smithearthmoving.com)

**LAWYER**

**SARAH SOMERS**  
**LAWYER**



Family Law - Divorce - Separation - Property Settlement - Defacto Relationships  
Children's Issues - Contact/Residence  
Competitive hourly rates - Reduced fee for Initial Consultation

*Serving the Wheatbelt Community*

85 Fitzgerald St, Northam  
0427 725 501  
[sarahsomers@inet.net.au](mailto:sarahsomers@inet.net.au)

**PAINTER**

**AWD ENTERPRISES**  
**Painting Contractor**

**Rego No 2916**

Domestic, Commercial, Industrial  
Protective Coatings, Insurance

**Contact Walter 0411 494 340**

[walterstrother@hotmail.com](mailto:walterstrother@hotmail.com)

**PEST CONTROL**



**LOCAL PEST CONTROL**

Domestic and Commercial  
*LOCALLY OWNED AND OPERATED  
SERVICING THE WHEATBELT*

Phone Deon or Leah King  
Phone/Fax: (08) 9041 2018  
Mobile: 0428 412 018  
Email: [kingz4@bigpond.net.au](mailto:kingz4@bigpond.net.au)  
PO Box 313 MERREDIN WA 6415  
PHD Lic 311 / ABN 58 438 967 068

**PHOTOCOPIERS COMMERCIAL**

**COPIER SUPPORT**

**Canon** SERVICE SALES  
and CONSUMABLES  
08 9041 5104

**SPECIALISED PHOTO PRINTING**  
and **LARGE FORMAT PRINTING**  
[jdrew@merredin.agn.net.au](mailto:jdrew@merredin.agn.net.au)

**TRADES PRICES**

- 12 EDITIONS \$15 EA
- 6 EDITIONS \$20 EA
- 3 EDITIONS \$25 EA

Drive carefully...



...we can wait



**PERTH MONUMENTAL  
WORKS**

'Supplying the wheatbelt  
since 1955'

**Phone 9478 2633**

Specializing in Bruce Rock Granite  
Memorials



[www.perthmonumentalworks.com](http://www.perthmonumentalworks.com)

**NANGEENAN HALL CLEARANCE AUCTION**  
**SATURDAY 9<sup>th</sup> APRIL**

**Celebrity Auctioneer: Tiny Holly**



As an auctioneer Tiny has performed in front of all types of crowds.

The highlight of any auction involving Tiny is his amazing humour and love of a crowd.

He is in the legend status of auctioneers in Australia having raised \$29,500,000 for much need causes.

The reality is that he is performing behind a mask that hides a man with depression and who has penned 3 suicide notes only to be dragged back, thankfully.

Tiny Holly is one of those gems that only the Australian Character can throw up, unfortunately he is in a constant battle with his inner demons.

Venue: **Nangeenan Hall :29 Marley Close Nangeenan (12 K's West of Merredin)**

Time: **Open 10am, Auction starts 11 AM**

Catering: CWA will have food and Drinks available on site **(Cash only)**

**Items for Auction include:**

- Collectables ✂ Antiques ✂ Stamped Corrugated Iron ✂ Camera's ✂ Irons ✂ Tools
- Bottles ✂ Bed frames ✂ Wood stoves ✂ Old gates and frames ✂ Tables ✂ Chairs
- Parts of Horse carriages ✂ Glass wall bricks ✂ Tables ✂ Chairs ✂ Art equipment
- Art ✂ Books ✂ Video collections ✂ Screen printing equipment ✂ Cement trough
- Old chain toilet

*Repair*

*Design*

*Love*

*Leon Baker*

**JEWELLERS**

MANUFACTURERS OF FINE JEWELLERY



08 9041 1340

70 Barrack St, Merredin, 6415

**ZUMBA**  
FITNESS

**EXTRA, EXTRA!  
IT'S ZUMBA  
FITNESS TIME**

**\$12  
FOR 1 HOUR**

**CLASS INSTRUCTOR SHAREE COOK**

Made with PosterMyWall.com

**APRIL**  
**SCHOOL HOLIDAY FUN!**

**12 APRIL**     **STAINED GLASS PICTURES**  
Make stained glass windows out of tissue paper and card. Lots of interesting designs to choose from or make your own.

**14 APRIL**     **EASTER CRAFT**  
Make a fun easter rabbit, egg box or cards just in time for Easter

**19 APRIL**     **CLAY FUN**  
Make multi coloured clay creatures or fun clay animals

**21 APRIL**     **SAND CASTLES**  
Come along and build castles out of cardboard then paint them with sand

**PARENTAL SUPERVISION REQUIRED FOR ALL CHILDREN UNDER 10**

Bookings essential | Limit of 40 participants | No walk-ins  
All sessions are 10.30am - 11.30am - Come dressed for fun!

**ALL ACTIVITIES ARE \$2 PER PARTICIPANT**

BOOK YOUR PLACE BY CALLING THE LIBRARY ON (08) 9041 1222

For more information please contact Wendy at the Library  
Telephone: (08) 9041 1222  
library@merredin.wa.gov.au  
www.merredin.wa.gov.au  
facebook.com/ShireofMerredin

**MERREDIN REGIONAL LIBRARY**

**Make the Best In-Season Nutrient Decisions**

Using nutrient Fuel Gauges and inSITE Plant Analysis, your local Area Manager can help you make the best in-season nutrient decisions.

Speak with Kobus today!

**SUMMIT FUEL GAUGES**     **SUMMIT inSITE**

**Kobus Marais, Area Manager - Merredin**

**Mobile:** 0427 766 508     **Email:** kmarais@summitfertz.com.au

**SUMMIT FERTILIZERS**

## Tales from the Rails

By **JANE PATRONI, Chairperson**

*We are always looking for interesting rail stories to share with our readers in the Phoenix and this one from a former Merredin resident takes us on a trip down memory lane. On a recent visit to the Museum, Anthea McGrath shared the story of her cousin **Norman Keith Sawyer, known as Keith.***

Keith was born on 24 January 1931 in Boulder WA. His father, Norman Francis Sawyer, came from Menzies WA and was employed as an engine driver for the WAGR. He and Keith's mother, Jean (nee Weir) were married in Boulder on 30 October 1929. The couple moved to Merredin, building their own home at 18 Hart Street. Following Norman's death in 1953, Jean remained in the house until she moved to Perth in 1968 to be closer to the boys.

Keith was the first of four boys born. He attended Merredin Primary School. An exercise book of his stories, marked by his 6<sup>th</sup> grade teacher notates his interest in writing.

As there was no High School in Merredin at the time, Keith moved to Kalgoorlie to attend the Eastern Goldfields High School, living with his grandparents. He returned to Merredin during term breaks.

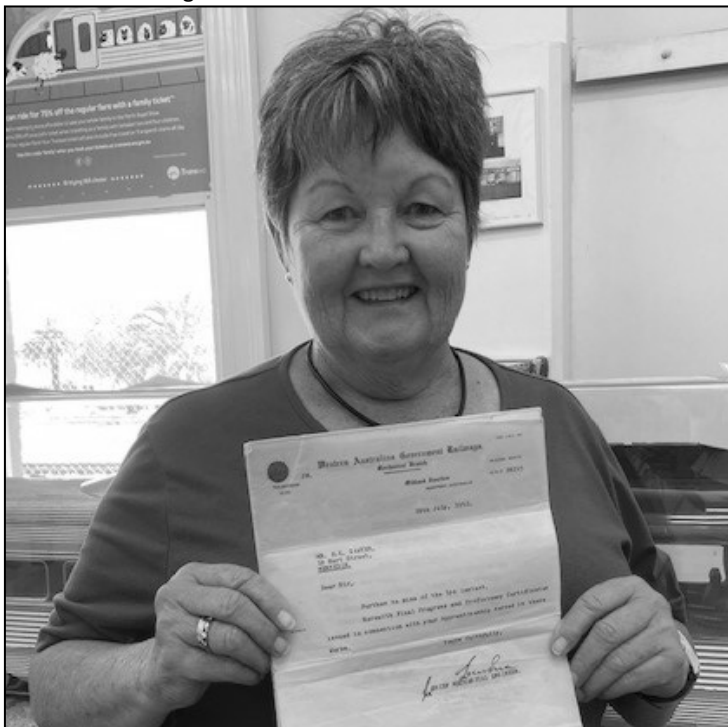
On leaving school in 1947 he obtained an apprenticeship with the WA Government Railways and Tramways in Car and Wagon Building at the Midland Workshops. On successfully completing his indenture, he worked at the Public Works Department for some time.

In 1955 Keith joined the Royal Navy, working as a naval shipwright. He was honourably discharged (in 1975) after 20 years, having attained the rank of Warrant Officer.

Keith then worked for the Travel Department of Westpac Bank until he retired at the age of 60.

In 1972 whilst still in the Navy, Keith married **Pamela Woods**. They had no children.

Keith passed away on 29<sup>th</sup> January 2018.



Anthea McGrath

## CENTRAL WHEATBELT DISABLED WORKSHOPS SUCCESSFUL

By **BEVERLY LIGMAN**

Ben Aldridge has a powerful story to tell and his recent online workshops in Merredin allowed him to connect with the Central Wheatbelt's disability community to tell that story.

After an alcohol-assisted gravity accident where he fell 10 meters, Ben became a quadriplegic at the age of 22 – he then created his organization 30 Foot Drop devoting his life to making sure that the disabled community has a voice.

An important part of 30 Foot Drop's program is Empowered Leadership, a six-day Leadership Development course that aims to develop the leadership potential of the disability community across WA.

"Resilience, adaptability, innovation, and collaboration are skills every great leader strives to develop and often they spend years doing so," Ben said.

"When you have a disability, these are tools essential to our survival, these building blocks are already in place and all we need to do is develop them.

"That's why these workshops are so important to regional WA, they give the disabled community in towns such as Merredin the chance to connect to their potential."

The workshop took place over two weeks from March 14 to 25, with Ben's team working

with participants to ensure their accessibility needs are being met.

Ben uses modern leadership theories, combined with proven, highly validated tools and the honest insights of leaders with a disability to introduce participants to key leadership fundamentals.

"It was fantastic to be able to connect with the Central Wheatbelt's disabled community," Ben said.

"I'm often not taken seriously as a business owner because people make assumptions when they see my wheelchair.

I've built my business around trying to dispel societal ignorance around disability and helping others find their way in the business world."

30 Foot Drop received federal funding through the Department for Social Services to develop this course specifically for people with a disability.

It has been designed by people with a disability, for people with a disability, and ultimately aims to develop participants' skills and knowledge so they can start to fill the current void of people with disability in politics, high levels of business or government, and boards or advisory groups.

Ben's next Empowered Leadership course takes place in Kalgoorlie on May 2.





**COMMUNITY CALENDAR proudly sponsored by  
Collgar Community Fund**

Find out more about the Collgar Community Fund by  
visiting [www.collgarwindfarm.com.au](http://www.collgarwindfarm.com.au)

Saturday	Sunday	Monday	Tuesday	Wednesday	Thursday	Friday
<p><b>9 April</b></p> <p><b>Merredin</b></p> <p>Seventh-day Adventist Church 11am</p> <p>Merredin Fine Arts Society 9am-12pm Check out their Facebook page for further details</p> <p>St Mary's Catholic Church - Vigil Mass 6:30pm</p> <p>Community Garden 2pm 0427 701 655</p>	<p><b>10</b></p> <p><b>Merredin</b></p> <p>Merredin Uniting Church 9am and 6pm</p> <p>All Saints Anglican Church—No Service</p> <p>Merredin Church of Christ 10am</p> <p>St Mary's Catholic Church Sunday Mass at 10.30am</p>	<p><b>11</b></p> <p><b>Merredin</b></p> <p><i>World Parkinson Day</i></p> <p>Bootscooting, 7pm at Cummins Theatre 9041 3005 (leave a message), 0409 172 259, or see Lyn at the Post Office</p> <p>A Chaired Taste Rehearsal 7pm, at Old North Merredin Primary School</p>	<p><b>12</b></p> <p><b>Merredin</b></p> <p>Gentle Gym at the Senior Centre 2pm</p> <p>Zumba! By Sharee Cook, 6pm - 7pm at the Cummins Theatre, call 0458 429 072</p>	<p><b>13</b></p> <p><b>Merredin</b></p> <p><i>National Scrabble Day</i></p> <p>Craft Group at the Senior Centre 10am</p>	<p><b>14</b></p> <p><b>Merredin</b></p> <p>Blessings of the Road—10am Pioneer Park</p> <p>Morning Tea at the Senior Centre at 10am</p> <p>Men's Shed 2pm - 5pm 0427 831 024</p> <p>Merredin Fine Arts Society 9am-2pm</p> <p>Merredin United in Prayer 7pm at Seventh-day Adventist Church</p>	<p><b>15</b></p> <p><b>Merredin</b></p> <p><i>Good Friday</i></p> <p>Merredin CRC—Closed</p> <p>Adult Day Care and Emergency Respite Trial 10am-12pm at Seniors Centre. Phone Rosemary 0439 746 300 or Julie 0429 411 377 for details.</p> <p>Kids Club, Ages 4-12, 3pm-5pm at Merredin Church of Christ, 17 Throssell Rd, gold coin donation 0429 108 241</p>
<p><b>16</b></p> <p><b>Merredin</b></p> <p>Seventh-day Adventist Church 11am</p> <p>Merredin Fine Arts Society 9am-12pm Check out their Facebook page for further details</p> <p>St Mary's Catholic Church - Mass 6:30pm</p> <p>Community Garden 2pm 0427 701 655</p>	<p><b>17</b></p> <p><b>Merredin</b></p> <p><i>Easter Sunday</i></p> <p>Ecumenical Gathering 6am at the Reflection Pond in Roy Little Park</p> <p>Merredin Uniting Church 9am</p> <p>All Saints Anglican Church 10am</p> <p>Merredin Church of Christ 10am</p> <p>A Chaired Taste - Workshop 1-3pm sponsored by Collgar Wind Farm</p>	<p><b>18</b></p> <p><b>Merredin</b></p> <p><i>Easter Monday</i></p> <p>Merredin CRC—Closed</p> <p>Bootscooting, 7pm at Cummins Theatre 9041 3005 (leave a message), 0409 172 259, or see Lyn at the Post Office</p>	<p><b>19</b></p> <p><b>Merredin</b></p> <p>Gentle Gym at the Senior Centre 2pm</p> <p>Zumba! By Sharee Cook, 6pm - 7pm at the Cummins Theatre, call 0458 429 072</p>	<p><b>20</b></p> <p><b>Merredin</b></p> <p><i>USA National Look alike Day</i></p> <p>Craft Group at the Senior Centre 10am</p>	<p><b>21</b></p> <p><b>Merredin</b></p> <p>Morning Tea at the Senior Centre at 10am</p> <p>Men's Shed 2pm - 5pm 0427 831 024</p> <p>Merredin Fine Arts Society 9am-2pm Check out their Facebook page for further details</p>	<p><b>22</b></p> <p><b>Merredin</b></p> <p><i>Earth Day</i></p> <p>Adult Day Care and Emergency Respite Trial 10am-12pm at Seniors Centre. Phone Rosemary 0439 746 300 or Julie 0429 411 377 for details.</p> <p>Kids Club, Ages 4-12, 3pm-5pm at Merredin Church of Christ, 17 Throssell Rd, gold coin donation 0429 108 241</p>
<p><b>23</b></p> <p><b>Merredin</b></p> <p>Seventh-day Adventist Church 11am</p> <p>Merredin Fine Arts Society 9am-12pm Check out their Facebook page for further details</p> <p>St Mary's Catholic Church - Vigil Mass 6:30pm</p> <p>Community Garden 2pm 0427 701 655</p>	<p><b>24</b></p> <p><b>Merredin</b></p> <p>Merredin Uniting Church 9am and 6pm</p> <p>All Saints Anglican Church 10am</p> <p>Merredin Church of Christ 10am</p> <p>St Mary's Catholic Church Sunday Mass at 10.30am</p>	<p><b>25</b></p> <p><b>Merredin</b></p> <p><i>ANZAC DAY</i></p> <p>Merredin CRC—Closed</p> <p>ANZAC Service 6am at the Cenotaph and 11am at Cummins Theatre.</p> <p><b>Nungarin</b></p> <p>ANZAC Service 10:30am at the Military Museum</p>	<p><b>26</b></p> <p><b>Merredin</b></p> <p>Gentle Gym at the Senior Centre 2pm</p> <p>Zumba! By Sharee Cook, 6pm - 7pm at the Cummins Theatre, call 0458 429 072</p>	<p><b>27</b></p> <p><b>Merredin</b></p> <p><i>USA National Denim Day</i></p> <p>Craft Group at the Senior Centre 10am</p>	<p><b>28</b></p> <p><b>Merredin</b></p> <p>Morning Tea at the Senior Centre at 10am</p> <p>Men's Shed 2pm - 5pm 0427 831 024</p> <p>Merredin Fine Arts Society 9am-2pm</p>	<p><b>29</b></p> <p><b>Merredin</b></p> <p>Adult Day Care and Emergency Respite Trial 10am-12pm at Seniors Centre. Phone Rosemary 0439 746 300 or Julie 0429 411 377 for details.</p> <p>Kids Club, Ages 4-12, 3pm-5pm at Merredin Church of Christ, 17 Throssell Rd, gold coin donation 0429 108 241</p>

**If you would like your community notice included.  
Email it to [administration2@merredincrc.com](mailto:administration2@merredincrc.com)**



# Tennis

By **MICHELLE GETHIN**

The SunSmart junior tennis coaching program has wound up for another season. Level 2 professional tennis coach Brenton Bacon has been traveling to Merredin since 2019 to provide tennis coaching to juniors and adults at Merredin, Burracoppin, and Kellerberrin. In that time, over 60 children have managed to have tennis lessons. Many of these children have now gone on to play at local tournaments and represent the zone at Country Week along with the prestigious D'Arcy Slater and Foundation Cups.

Professional tennis coaching isn't a cheap exercise, and the Merredin District Lawn Tennis Club has been fortunate to

secure funding over time from the following partners to help offset some of the costs-SunSmart, Great Southern Fuels, Olympic Motel, Merredin Bed & Breakfast, Mia Davies MLA and AWN. The MDLTC also received some one-off funding from a junior sporting crop. While venue logistics and extreme weather conditions marred the most recent round of tennis coaching on offer, the MDLTC still hopes to offer something for keen junior tennis players in the future. The 2022/23 junior tennis season will begin in September. To keep up to date with all things tennis in our area, follow the Merredin Districts Lawn Tennis Club or Central Districts Tennis Association Facebook pages.



*Extreme summer weather conditions forced some sessions with coach Brenton Bacon under the tennis pavilion.*

## MERREDIN MARKETS

Saturday 21 May 2022

9 am - 1 pm

Cnr Barrack & Queen Streets

Stalls Food Raffle  
Entertainment

### To book a stall



9041 1041



administration4@merredincrc.com



110 Barrack st, Merredin



BailiwickLegal.

## MERREDIN LEGAL HOT DESK

Merredin Community Resource Centre  
110 Barrack St

DANIELLE EDWARDS



The team at Bailiwick Legal is excited to launch its new initiative  
**Regional Legal Hot-Desk.**

Bailiwick Legal practices in the areas of commercial, agribusiness, litigation, dispute resolution, wills & estates, employment & workplace, property, mining & access, and tourism law.

Danielle Edwards grew up in the country and is an Associate at Bailiwick Legal.

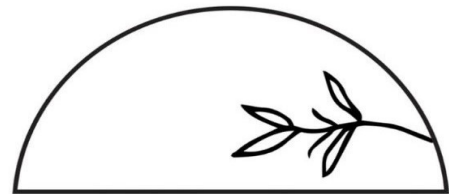
Danielle will be in Merredin on the following dates between  
9.30am - 3.30pm;

**March 14**

**May 9**

**July 18**

To book a free 20-minute consultation please email  
danielle@bailiwicklegal.com.au or call 0488 727 886



THE DUST  
M E R C H A N T

Women • Home • Children • Gifts

Usual Opening Hours:

Thursday 10-12

Friday 10-12

Occasional Saturdays

Old Post Office Kellerberrin

58 Massingham Street

www.thedustmerchant.com the\_dust\_merchant

## Tennis

By MICHELLE GETHIN

Five students from St Mary's School Merredin recently represented their school at the 2022 Schools Classic Academy Plate country tennis finals in Perth. St Mary's entered two teams in the zone playoffs back in February at the Beverley Lawn Tennis Club and their number one team emerged victorious earning them a berth in the main final to be held at the State Tennis Centre in Perth on 25th March.

While COVID issues whittled the 10 invited finalists down to 6, the teams that participated in the final were very evenly matched which made for a very exciting day of tennis.

The St Mary's team was made up of year 4-6 students and consisted of Charlie Growden, Archie Gethin, Ellie Atkinson, William Elliott and Greta Gethin. All players were required to play

singles and mixed doubles matches.

St Mary's lost their first round against Kulin DHS 4-2 but each match was only lost by a couple of points. Brother and sister duo Archie and Greta Gethin won their mixed doubles 13-12.

St Mary's won their second round against Newdegate PS 5-1 but their third round match against Kojonup DHS was a 3-3 draw with both teams scoring exactly 81 points. Charlie and Ellie were made to take the court again in an 8 point match decider which came down to 4-4. Kojonup hit the final point long leaving St Mary's winners of the decider 5-4.

St Mary's won against Brookton DHS 4-2 and finished the day with a 6-0 win over Wickepin PS.

Kulin DHS were crowned winners of the day with St



*Greta Gethin, William Elliott, Charlie Growden, Archie Gethin and Ellie Atkinson at the State Tennis Centre with their runner up medals*

Mary's a very close second.

Special mention must be made of Greta Gethin who at 9 years of age was the youngest player in the team. She played outstanding tennis and won 3/5 singles matches and 4/5 mixed doubles matches. It was a hot day and with no girl subs, both Greta and Ellie had to play every

single match whereas the boys got to rotate a bit through singles and doubles.

With four out of the five students in the team now moving onto high school, hopefully the next crop of St Mary's school tennis players are ready in the wings to take on the 2023 challenge.

## Hockey

By MICHELLE GETHIN

The transformation of the Merredin Hockey Club is now complete with the new look uniforms unveiled at a club event recently.

It has been a long journey for the club that previously existed as two separate entities- the Merredin Mens Hockey team and the Merredin Womens Hockey team. The men's team used to play in the southern based Central Wheatbelt hockey competition while the women played in the East Avon Womens Hockey Association.

It wasn't until the Eastern Districts Hockey Association (EDHA) was formed in 2018 and that each of the four participating clubs (Merredin, Burracoppin, Naremben and Bruce Rock) were required to field a men's team, two women's teams and a juniors team that the amalgamation process began.

With the name Merredin Hockey Club formally registered in 2021 it was time to create a new kit for the entire club. Three incredibly generous local sponsors came on board: Cockies Ag (Jasmin Cockram), Prime Time Haulage (Dan O'Meagher) and CSBP (Hannah Mills) and thanks to Maxine Christie's hard work, a new logo and uniform was designed.

At the uniform unveiling event held at the Merredin Bowling Club, the club also made a special presentation to long time exec Michaela Thorn (President) and Maxine Christie (Secretary) who stepped down at the last AGM after many years of passionate and committed service to the club. The new exec consists of President Bryce Mullins, Vice President Henry Brown, Secretary Hannah Mills and Treasurer Michelle Gethin.

The 2022 EDHA season gets underway in late April and the



*Sponsors with players: Dan O'Meagher (Prime Time Haulage), Michaela Thorn, Hannah Mills (CSBP), Andy Knight, William Elliott and Jasmin Cockram (Cockies Ag)*

Merredin Hockey Club is always on the lookout for new players. The coaching group consists of Andy Galbraith (Mens), Todd Clemesha (Womens A&B) and Michelle Gethin/Erin Elliott (Juniors). The club trains on a Wednesday and welcomes players of all abilities- even those who have never

wielded a hockey stick before!

If you are interested in joining a re-vamped and vibrant club going places, get in contact through merredin\_hockey@outlook.com or follow our Merredin Hockey Club Facebook page.

## Hockey

### CENTRAL WHEATBELT LADIES HOCKEY

2nd April 2022

Round one

*Mukinbudin (3) d. Bencubbin (1)*

**Mukinbudin: Goals:** Dale Cronje (2), Sina Gringer (1)

**Awards: Player's choice:** Lara Silinger

**Coaches award:** Lauren London

**Bencubbin: Goals:** Dannell Foley

**Awards: Best player:** Johnine Gobbart

**Coaches award:** Sally Putt

**Goal/defender of the day:** Danelle Foley

*Koorda (7) d. Kalannie (0)*

**Koorda: Goals:** Lana Foote (2), Hannah Cooper (1), Rebecca Fuchsichler (1), Carolina Doyle

(1), Lauren Bear (1), Zara Metcalfe (1)

**Awards: Tied best player/coaches award:** Lana Foote & Gabrielle Quade

**Kalannie: Awards: Best player:** Bethany Sturniolo

**Coaches award:** Sam Dickens

*Towns (2) d. Beacon (1)*

**Towns: Goals:** Jennifer Craft (1), Zjene Lamb (1)

**Awards: Best player:** Debbie Hurley

**Coaches award:** Abigail Hodder

**Beacon: Goals:** Kaley McDonnell (1)

**Awards: Best player:** Emily Junk

**Coaches award:** Kaley McDonnell

## Netball

### CENTRAL WHEATBELT NETBALL

2nd April 2022

*Bencubbin (39) d. Mukinbudin (26)*

**Bencubbin: Best player:** Charlotte Crossen

**Coaches award:** Brydee Gardener

**Mukinbudin: Best player:** Tanya Turner

**Coaches award:** Caitlyn Squire

*Kalannie (33) d. Koorda (30)*

**Kalannie: Best player:** Bella White

**Coaches award:** Kayla Moore

**Koorda: Best player:** Rachel O'Reilly

**Coaches award:** Charli West

## Football

### CENTRAL WHEATBELT FOOTBALL LEAGUE

2nd April 2022

**Central Wheatbelt Football League**

*Bencubbin (106) d. Mukinbudin (43)*

**Bencubbin: Goals:** Rhys Edmondson (3), Jack Downsborough (3), Jack Stevens (3), James Lindroth (2), Tyson Rowling (1), Luke Keamy (1), Corey Higgins (1)

**Best players:** Corey Higgins, James Lindroth, Jack Stevens, Rhys Edmondson, Damon Manuel, Tyson Rowling

**Mukinbudin: Goals:** Justin

Sprigg (2), Cameron White (1), Taj Narrier (1), Jared Beagley (1), Reade Walker (1)

**Best Players:** Zeke Stewart, Campbell Brandis, Caleb Shadbolt, Jared Beagley, Reade Walker

*Kalannie (109) d. Koorda (77)*

**Kalannie: Goals:** Matthew Johnson (9), Matthew Dinsdale (3), Kaden Reynolds (1), Jack Hoskins (1), Regan Jefferys (2), Benjamin Walton (1)

**Best players:** Matthew Josnson, Jake Kemsley, Matt Reynolds, Benjamin Walton, Matthew Dinsdale, Reuben Cail

## Darts

### NAREMBEEN AND BRUCE ROCK DARTS ASSOCIATION

25th March 2022

Round 1 Week 1

Magpies (7) d. MC Sharks (4)

Royals (6) d. Wizards (5)

Jets (6) d. Bruce Rock (5)

1st April 2022

Round 1 Week 2

Wizards (8) d. Bruce Rock (3)

MC Sharks (8) d. Royals (3)

Jets (7) d. Magpies (4)

Here in the Wheatbelt  
we LOVE our sport

CONTRIBUTE BY EMAILING PHOTOS AND ARTICLES TO  
ADMINISTRATION@MERREDINCR.COM

**STEVE MARTIN MLC**  
MEMBER FOR THE AGRICULTURAL REGION



114 Federal Street, Narrogin WA 6312



Steve.Martin@MLC.wa.gov.au



(08) 9881 1558



stevemartinmlc



PO Box 589, Narrogin WA 6312



stevemartinmlc.com.au

## WTF 7th - 20th APRIL 2022

By **PETER BARRETT**

The days are getting noticeably shorter now as the sun retreats into the Northern hemisphere at its most rapid rate. This means more time for Watching The Firmament!

Insomniacs are now treated to a very close conjunction of Mars and Saturn, making for a highly attractive adornment of the pre-

dawn Eastern sky. Both planets shine with equal brightness and are within one degree of each other. Worth getting up for I reckon.

Set your alarm for 3am. Megabright Venus will be just rising by then, and Jupiter follows an hour after that. During that time, I guarantee you will see a meteor or two, and after

Saturday the 16th the early morning meteor showers should start to pick up considerably with the Puppids and Lyrids becoming active.

In the evenings the three brightest stars in the night sky, Sirius, Canopus and Alpha Centauri are all visible. After about 9pm red Arcturus, the

fourth brightest, rises in the Northeast.

Meanwhile, in the daytime, the sun is starting to really get going now and we are getting geomagnetic storms on average about once a fortnight. These will pick up even more as Cycle 25 builds.

Keep looking up, but only at night!

Date/Planet	Sun ☉	Moon ☾	Venus ♀
Thu 7	☿ 06:21am-05:56pm	♈ 12:42pm-09:48pm 34%	☿ 02:51am-03:48pm 58%
Fri 8	☿ 06:22am-05:55pm	♈ 12:42pm-10:38pm 43%	☿ 02:52am-03:47pm 58%
Sat 9 🌑	☿ 06:22am-05:53pm	♈ 01:32pm-11:32pm 53%	☿ 02:53am-03:47pm 59%
Sun 10	☿ 06:23am-05:52pm	♉ 02:16pm-12:29am 63%	☿ 02:54am-03:46pm 59%
Mon 11	☿ 06:24am-05:51pm	♉ 02:56pm-01:28am 72%	☿ 02:55am-03:46pm 59%
Tue 12	☿ 06:24am-05:50pm	♊ 03:32pm-02:28am 81%	☿ 02:56am-03:45pm 60%
Wed 13	☿ 06:25am-05:49pm	♊ 04:05pm-03:29am 89%	☿ 02:57am-03:45pm 60%
Thu 14	☿ 06:26am-05:47pm	♊ 04:36pm-04:31am 95%	☿ 02:58am-03:44pm 61%
Fri 15	☿ 06:26am-05:46pm	♋ 05:06pm-05:34am 98%	☿ 02:59am-03:43pm 61%
Sat 16 🌑	☿ 06:27am-05:45pm	♋ 05:37pm-06:39am 99%	☿ 03:01am-03:43pm 61%
Sun 17	☿ 06:28am-05:44pm	♋ 06:11pm-07:47am 98%	☿ 03:02am-03:42pm 62%
Mon 18	☿ 06:28am-05:43pm	♌ 06:49pm-08:58am 93%	☿ 03:03am-03:42pm 62%
Tue 19	♃ 06:29am-05:42pm	♌ 07:32pm-10:10am 85%	☿ 03:04am-03:41pm 63%
Wed 20	♃ 06:30am-05:41pm	♌ 08:23pm-11:19am 76%	☿ 03:05am-03:40pm 63%

Date/Planet	Mercury ☿	Mars ♂	Jupiter ♃	Saturn ♄
Thu 7	☿ 06:48am-06:09pm 98%	♂ 02:12am-03:31pm 91%	♃ 04:26am-04:51pm	♄ 02:03am-03:25pm
Fri 8	☿ 06:54am-06:10pm 97%	♂ 02:11am-03:28pm 91%	♃ 04:23am-04:48pm	♄ 02:00am-03:22pm
Sat 9	☿ 07:00am-06:12pm 96%	♂ 02:11am-03:28pm 91%	♃ 04:20am-04:44pm	♄ 01:56am-03:18pm
Sun 10	☿ 07:06am-06:13pm 94%	♂ 02:11am-03:26pm 90%	♃ 04:17am-04:41pm	♄ 01:53am-03:14pm
Mon 11	♃ 07:12am-06:14pm 92%	♂ 02:10am-03:25pm 90%	♃ 04:14am-04:38pm	♄ 01:49am-03:11pm
Tue 12	♃ 07:18am-06:16pm 90%	♃ 02:10am-03:23pm 90%	♃ 04:11am-04:34pm	♄ 01:46am-03:07pm
Wed 13	♃ 07:24am-06:17pm 88%	♃ 02:10am-03:21pm 90%	♈ 04:08am-04:31pm	♄ 01:42am-03:03pm
Thu 14	♃ 07:30am-06:18pm 85%	♃ 02:09am-03:20pm 90%	♈ 04:06am-04:28pm	♄ 01:39am-03:00pm
Fri 15	♃ 07:35am-06:19pm 83%	♃ 02:09am-03:18pm 90%	♈ 04:03am-04:25pm	♄ 01:35am-02:56pm
Sat 16	♃ 07:40am-06:21pm 80%	♃ 02:08am-03:16pm 90%	♈ 04:00am-04:21pm	♄ 01:31am-02:52pm
Sun 17	♃ 07:45am-06:22pm 77%	♃ 02:08am-03:15pm 90%	♈ 03:57am-04:18pm	♄ 01:28am-02:49pm
Mon 18	♃ 07:50am-06:23pm 73%	♃ 02:08am-03:13pm 90%	♈ 03:54am-04:15pm	♄ 01:24am-02:45pm
Tue 19	♃ 07:55am-06:24pm 70%	♃ 02:07am-03:11pm 90%	♈ 03:51am-04:11pm	♄ 01:21am-02:41pm
Wed 20	♃ 07:59am-06:25pm 67%	♃ 02:07am-03:09pm 90%	♈ 03:48am-04:08pm	♄ 01:17am-02:38pm

## Horoscopes



**ARIES 21 March—19 April**

Some may feel under a lot of pressure which could be a good time to play your cards right.



**TAURUS 20 April-26 May**

Being socially engaged and inspired by groups of people, heartwarming experiences await.



**GEMINI 21 May-20 June**

Stress levels may rise, surround yourself with likeminded people to stay grounded.



**CANCER 21 June-22 July**

Being more open to those around you - someone you know can make things happen.



**LEO 23 July-22 August**

Expect success in what you do, be mindful that someone from the past can shake things up.



**VIRGO 23 August-22 September**

Self-analysis is important, stress levels may be high but if you are willing things will work out.



**LIBRA 23 September-22 October**

Transitions from demanding relationships will bring a determination for bigger goals.



**SCORPIO 23 October-21 November**

Choose between security and insecurity, everything depends on your willpower.



**SAGITTARIUS 22 November-21 December**

New changes will bring people into your life to fill your heart with love and kindness.



**CAPRICORN 22 December-19 January**

Keep cool while challenging goals are set. There is a new focus on the horizon.



**AQUARIUS 20 January-18 February**

Don't let people push you around, things are looking promising so fight for your goals.



**PISCES 19 February-20 March**

A good future is heading your way, use your creativity and the arts to help.

## MERREDIN BASKETBALL ASSOCIATION RAFFLE

The Basketball Association would like to thank everyone who bought a ticket in the raffle and the members who sold tickets in the raffle to win a Kogan 65" TV including wall mount bracket, valued at \$850.

The proceeds of the raffle were used to purchase Country Championship shirts that ensured all our teams that went away to represent the Association looked great off the court!

The Association would also again like to sincerely thank **AVISO WA INSURANCE BROKERS** for their generous donation of this prize and for also selling tickets.

The Association would like to congratulate the winner ticket #157 purchased by **NAN MCGRATH** – we hope you enjoy your new TV. Thank you again to everyone who supported the Association this year.



*Kat White, President of the Basketball Association presents Nan McGrath with her new TV.*

## INCREASE COUNTRY FUEL CARD AND OVERHAUL PATS

The Opposition has called for the McGowan Government to ease cost-of-living pressures on West Australians by increasing the value of the Country Age Pension and Emergency Services Volunteer fuel cards as petrol prices across the nation soar to record levels.

Local Member for Central Wheatbelt Mia Davies MLA said the value of the Country Age Pension Fuel Card had not been increased for the entire time Labor has been in Government.

"The McGowan Government has a \$5.8 billion surplus and plenty of scope to assist those on fixed incomes with limited or no access to public transport in regional WA," Ms Davies said.

"Boosting the Country Age Pension Fuel Card would make a swift and significant difference to regional pensioners doing it tough." Ms Davies said the McGowan Government had introduced cost savings for public transport users in the Perth metropolitan area by slashing train and bus

fares. "In the regions we are reliant on our own vehicles to remain mobile, attend medical appointments, and visit loved ones," Ms Davies said.

"The McGowan Labor Government has failed to increase the value of the Country Age Pension Fuel Card for the past five years in line with increased cost of living.

"Petrol prices have spiked and the value of the card has effectively been halved." Ms Davies said the Opposition is also calling for an increase in the Patient Assisted Travel Scheme (PATS) rebate.

"The 16-cent subsidy buys just 73 millilitres of fuel at current fuel prices and that's just ridiculous," she said.

"It needs to be increased in the upcoming budget to reflect the challenges we are facing with fuel prices.

"We don't want people postponing travel to specialist appointments so they can put food on their tables or meet other household expenses."

# CLASSIFIEDS

## Positions Vacant

### Aged Care clinical staff wanted

Catholic Homes has been providing aged care for over 50 years in Western Australia and are looking for people to join our Home Care team.



We are looking for caring and passionate clinical staff for our aged care residences and home care services across Western Australia. Our Care with Purpose people-centred care model promotes dignity, respect, privacy and independence. As a not-for-profit organisation, we are inclusive and welcome

all faiths and backgrounds. We offer competitive hourly rates, casual loading and superannuation. We have both permanent and casual roles available now.

*If you would like to discuss further call 1300 244 000 or email your CV to [homecare@catholichomes.com](mailto:homecare@catholichomes.com)*



*care with purpose*

CATH0249

### Positions Vacant

#### RON BATEMAN & CO

##### 3 Positions Available

Seeking two RELIABLE staff for stock handling/ sales positions.

Also one data entry person.

Confidence with computers and a good knowledge of hardware, belts, bearings and agricultural spares is advantageous.

Some Saturday Morning Work required.

Phone: 9041 1777

[info@ronbateman.com.au](mailto:info@ronbateman.com.au)

92 Mitchell St, Merredin

### Public Notices

#### Merredin water pipeline upgrade

Water Corporation will soon commence work to upgrade a 3.6km section of water pipeline along Hughes Road. This is part of the Goldfields/Golden pipeline which supplies water to customers between Perth and Kalgoorlie.

This work is scheduled to begin in April 2022 and is expected to take approximately 9 months to complete.

For more information, please visit [watercorporation.com.au/merredinwaterpipeline](http://watercorporation.com.au/merredinwaterpipeline)

**Merredin Show Inc Raffle Permit #LS217830521** was drawn on the 2nd April. The first prize winner was Sandy Fleay with ticket number 063. The second prize winner was Lesley Watson with ticket number 119. The third prize winner was the Ashmore Family with ticket number 424.

**FIND THE RIGHT PERSON FOR THE JOB BY ADVERTISING IN THE PHOENIX**



Apple Watch for sale, hardly used, used to belong to my Granny Smith

**YOUR AD HERE**



We are still in need of rentals for our tenant base. If you would like more information about leasing your property - Contact us and we would be more than happy to help!  
[info@asktonym.com.au](mailto:info@asktonym.com.au) / 08 9574 2917

## FOR SALE



### FOR SALE — 18 Solomon Street - \$280,000

Fantastic 4 x 2 brick and tile home in great location! This house is serviced by evaporative air-con and a gas hot water unit. There is a single carport also to the side of the house. There is a large, fully enclosed rear yard with entertainment area. There is a double, lockable garage and access through side gates to the garage, so plenty of room for the toys and tools! Do yourself a favour and call Sharon Johnson on 0448 108 545 to discuss a viewing or details!



### FOR SALE - 60 Kitchener Road - \$225,000

This very tidy 3 x 1 is available now! Featuring a large, bright front lounge room that wraps around into the huge kitchen! Through to the back yard is a large patio area and grassed area, and a second section which has a chook ben, a small 2x2m garden shed and rear access through a lane way. The property is serviced by a gas hot water unit, scheme water and evaporative air-con! Do yourself a favour and call Sharon Johnson on 0448 108 545 to discuss a viewing or details!

## FOR RENT



### Unfurnished 2 x 1 unit \$220 / week

Includes a kitchenette, a shared laundry and carport spaces.

A nice grassed area out the front, and is a close distance to town!

Contact us on 9574 2917 or email [info@asktonym.com.au](mailto:info@asktonym.com.au) for a pre-application



### Unfurnished 3x1 house \$300 / week

3 bedroom house with a single carport.

Yards are spacious and includes a garden shed out the back!

Contact us on 9574 2917 or email [info@asktonym.com.au](mailto:info@asktonym.com.au) for a pre-application.



Phone - (08) 9041 6510

Fax - (08) 9041 6555

www.elders.com.au/merredin

Will Morris 0448 415 537  
 Jacqui Burton 0498 457 539  
 william.morris@elders.com.au  
 jacqui.burton@elders.com.au

**PRICE:** \$400-420,000  
**AGENT:** Elders Real Estate Merredin  
**CONTACT:** Will Morris 0448 415 537  
**Elders Property ID:** 23332553

**BIG FAMILY HOME**

Big 4 bedroom 2 bathroom brick veneer home on a 1,063m<sup>2</sup> corner block close to town centre. Built in 1998 this home offers a formal entrance opening onto a large open plan living space with formal dining and large kitchen with free standing stainless steel gas oven and cooktop. The hot water system is electric with 125L storage, there is ducted evaporative air conditioning throughout, plus 3 reverse cycle split systems installed to the master bedroom, 2nd bedroom and the living area. The front yard is well laid out with low maintenance gardens and drive-thru horseshoe driveway, plus a brick paved driveway to the double carport UMR with sliding door access to the house. The well fenced back yard is a blank canvas but has rear access to a 9m x 8m lock up workshop with concrete floor and power connected.

All enquiries to exclusive selling agents Elders Real Estate- call local specialists Will Morris on 0448 415 537 or Jacqui Burton on 0498 457 539 to arrange your private viewing.

**20 Coronation Street, MERREDIN**

4



Beds

2



Bath

2



Parking

**27 Woolgar Street, MERREDIN**  
**\$200,000 WEB ID 23335717**

This house is full of character features with colonial windows, French doors and polished wood floors. The lounge room has a freestanding wood fire and a reverse cycle split system for year round comfort. There is also fully ducted evap air con throughout the home. The country style kitchen flows through to the dining room which opens onto the back veranda. The family room at the rear of the home opens onto a timber decked patio. Front and rear gardens are a blank canvas but the layout for landscaping is already there. This is a great buy so get in quick!



**9 Mill Street, MERREDIN**  
**\$160,000 WEB ID 23336488**

This is a fantastic opportunity for investors to buy a well presented 3 bedroom home in a nice quiet street. This home offers leafy low maintenance gardens, a well fenced rear yard with vehicle access and a monster sized paved entertaining area under a large gable patio. Inside, the home has been updated with all cabinets in the kitchen and laundry replaced and a new vanity and shower screen in the bathroom. The home has been tastefully decorated with carpet and timber laminate flooring and new paint throughout. There's nothing to spend on this lovely home.



**15 Growden Street, MERREDIN**  
**\$330,000 - WEB ID 23330462**

This home boasts stunning timber look floor tiles that flow from the formal dining room through to the large family room where you will find a brick built in bar and an enormous freestanding wood fire to keep the whole house warm and toasty on those cold winter nights. In the summer you have the economical evaporative air conditioning ducted throughout the home to keep you cool. If you like cooking you will love this kitchen, with tonnes of bench space, ample storage, two built in wall ovens and an island bench with gas cook top and range hood.



**24 Duff Street, MERREDIN**  
**\$195,000 - WEB ID 23333441**

Ideal investment as an easy to manage short term accommodation business in Merredin. One title with two units and no strata. Each unit has one bedroom with ensuite, a lounge room with reverse cycle air conditioning, kitchen with gas cooking, laundry, secure parking and a private back yard. There is additional space at the north end of the block which could easily be set up for more parking plus an extra outbuilding containing two store rooms. With short term accommodation and rentals extremely high in demand you have the option of renting both units out.

