

36 Bates Street, Merredin
Phone 9041 3126



Book online

www.karismedicalgroup.com.au

THE PHOENIX

Hon Mia DAVIES MLA
MEMBER FOR CENTRAL WHEATBELT
LEADER OF THE NATIONALS WA
LEADER OF THE OPPOSITION
THE NATIONALS
for Regional WA

\$2

Thursday 10th March 2022

Issue 5

FIRST MERREDIN MARKETS OF 2022

By BRAIDIE HOLDER

Despite the rain, humidity and severe storm warnings, there was quite a good turn out at the first Merredin Twilight Markets of 2022, on the 25 February.

With free face painting from the very talented, Sheree Lowe and Men's Shed train for the kids, and plenty of stalls and raffles, everyone had a great time in the heat and light showers.

Luckily Creamy Cow Soft Serve decided to set up closer this time parking right at the footpath on Queen Street, so that everyone could go straight from the CRC food stall, serving up a sausage sizzle and bacon and egg toasties, for dinner over to Creamy Cow to get ice cream for dessert.

Amongst the stalls there was Lutum Designs, Tupperware, demonstrations from Lauren Steel for Thermomix and a candle stall, Scents, coming all the way from Perth.

There was also Peta Knight with her money plants and suncatchers, Rochelle Stone and Alison Morgan with their

second-hand goods and the Merredin Show with their own raffle, which was very popular, the prize was a metal garden ornament made by Clayton Murray, the winner of the Merredin Show raffle was Kirsty Rochford.

The Merredin CRC would like to say a huge thank you to Nextra Merredin, Two Dogs Home, Timber and Hardware Merredin, Go Mad Discount Store and Tanya at Merredin Flowers and Gifts for donating items for the Markets Raffle, the support from local businesses is always amazing to see!

The Markets raffle helps us raise

money to continue to make the markets bigger and better for the community! The money also allows us to provide free entertainment to the community at the markets like the free face painting from Sheree!

The lucky winners of the Merredin Markets raffle were Vicki Campbell and Gillian Ovens.

It was a great night despite the spots of rain and heat and the Merredin CRC thank everyone that came out to support the markets, which wouldn't be possible without the support and involvement of the

community.

Thankyou also to the wonderful volunteers that dedicated their Friday evening to help with cooking sausages, eggs, bacon, setting up, packing away and manning the CRC food stall. What would we do without the wonderful assistance from the Merredin Men's Shed, thankyou for setting up the marquees, tables and chairs and putting them all away. And of course, thank you to all of the stallholders who came out and braved the weather!.

We hope to see you all at the next day markets in May.



Phone appointments available

We are open

9am - 5pm Monday to Thursday

8.30am - 3pm Friday

91 Todd St, PO Box 818, Merredin
Phone: 08 9041 2900 or 08 9041 4151
Fax: 08 9041 4888
Email: admin.mmc@westnet.com.au
Facebook: Merredin Medical Centre



Dr Jonathan Ruiz MD, VGDWH, MACEP, FPCMAC



Dr Mirielsa Nufable-Ruiz MGGS, DPPS, DCH, VGDWH, FRACGP



Dr Alan Roustami MD, AMC

Merredin Medical Centre





GET 10 CENTS EACH FOR YOUR CONTAINERS AT WHEATBELT CASH FOR CONTAINERS

WEDNESDAY	12.00PM	TO	5.00PM
THURSDAY	12.00PM	TO	5.00PM
FRIDAY	12.00PM	TO	5.00PM
SATURDAY	9.00AM	TO	1.00PM

GET YOUR REFUND AT
3 BENSON ROAD, MERREDIN

BOOKINGS ESSENTIAL FOR
BULK QUANTITIES.
(APPOINTMENTS AVAILABLE FROM 8.00AM
ONWARDS TUESDAY TO FRIDAY)

PHONE 0429 467 178 OR EMAIL
CASHFORCONTAINERS@OUTLOOK.COM
TO MAKE A BOOKING.



Visit containersforchange.com.au
to find out more and
create your scheme ID

WYALKATCHEM RODEO AND COUNTRY MUSIC SUNDOWNER



Saturday 26 March 2022

LIVE BANDS

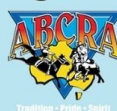
Gates Open 8 am

Main Rodeo
commences at 5 pm
ABCRA AFFILIATED

Wyalkatchem Recreation Centre, Hands Drive, Wyalkatchem

Tickets \$50
Pensioners & Children Over 13 \$25
Weekend & Camping Pass \$15

Tickets @ www.doublebarreleentertainment.com.au
Contact Mark 0429 031 778 for more info



CONTENTS

Merredin College.....	5
St Mary's Primary School.....	6
Library Musings.....	6
From the History Room.....	6
COVID 19 Statistics.....	7
Court Report.....	8
My Thoughts.....	9
Trades.....	13
Collgar Community Calendar...	15
Astronomy.....	16
Horoscopes.....	21
Classifieds.....	20, 21 & 22



Produced and printed fortnightly by
Merredin Community Resource Centre
110 Barrack Street, Merredin
Ph: 9041 1041 Fax: 9041 1042

Deadlines

Articles, Advertisements
(including Classifieds)
5pm Monday before publication date

Content/production

Kirsty Rochford
administration@merredincrc.com

Content/production

Debbie Morris
merredin@crc.net.au

Advertising

administration4@merredincrc.com

Upcoming Editions

24th March & 7th April 2022

www.phoenixnews.com.au

The Phoenix Prices

Prime Advertising

Front	\$150
Back Full page	\$200
Ears	\$30
Front inside full	\$180
Back inside full	\$180

Colour

Quarter	\$40
Half	\$80
Full	\$160

Black & White

Quarter	\$30
Half	\$60
Full	\$120

Classies (b/w)

Non business for sale	free
General lineage	50c per word

Display per cm

Public Notice	\$10
Employment	\$5

Trades

12 editions (each)	\$15
6 editions (each)	\$20
3 editions (each)	\$25

Artwork

Fee	\$30
-----	------

The Phoenix

Available at the following outlets:

BP Travel Stop
Café 56
Cutting Room
Dimensions
Go MAD
IGA
Inspire
Merredin Bakery
Merredin CRC
Merredin Flowers
Merredin Harvest
Merredin Swimming Pool
Nextra
Puma Roadhouse
Two Dogs Home Hardware
Wild Poppy Café

Thankyou to these businesses for their support for The Phoenix and Merredin Community Resource Centre

ONLINE SUBSCRIPTIONS

Email administration4@
merredincrc.com
12 or 24 editions

Write a Letter to the Editor

Email
administration
@merredincrc.com

Call 9041 1041

Donate your 10 cent refund to a community group

CWA of WA (Inc) – C10240442

Merredin College P&C Association - C10349064

Merredin Community Garden Group Inc. (MCGG) - C10358700

Merredin Community Resource Centre - C10242783

Merredin Districts Lawn Tennis Club - C10322072

Merredin Hockey Club - C10330862

Merredin Railways Tennis Club - C10336486

Merredin Repertory Club - C1032349

Merredin Show - C10360791

Nangeenan Hall - C10481734

Parnana Pikurtu Wildlife Sanctuary - C10305338

St Mary's PS - C10323720

ELIGIBLE CONTAINERS

Most glass, plastic, aluminium, steel and paper-based cartons between 150mL and 3L



Letter to the Editor

THANK YOU FROM MERIDIAN REGIONAL ARTS

Dear Central Wheatbelt Community

The Team at Meridian Regional Arts would like to thank you for a successful pilot year with the Let Us Show You project.

In late 2020 a group of art-passionate Merredin Locals got together and formed Meridian Regional Arts, a community group with the goal to increase arts opportunities in the Central Wheatbelt. We surveyed the public, applied for grants, contacted artists, designed workshops, planned little pop up arts activities all with the air of experimentation. We got to hang out with the incredible team at the Merredin Community Garden Space, learnt how to weld and plasma cut with Lewis Horne, taught the students of St Mary's how to mix colours and design murals with Chloe, Lisa and Jess, trained up local artists to create murals and paste ups, and worked with the incomparable Mel McVee to design a mural for Merredin, painted by you, our wonderful community! Seeing the mural go up in the main street signalled the successful end of our pilot program, and filled us all with immense gratitude for so many talents and generous locals, we would like to take this opportunity to thank you all.

Firstly- to all of our willing participants. Whether you filled in the survey, attended drop in sessions, we our core sculpture artists, or our mini-artists from St Mary's, or part of the mural team we want to thank you so much for your time and efforts. Everything you created this year was outstanding, especially seeing as so many of you would try to convince us you weren't artists. You are all artists, whether you are just starting out, or have been making for many years, and you are all fantastic.

To the Shire of Merredin, thank you for your patience and interest in what we wanted to achieve. Though the program was not funded by the Shire, you supported us with advice, invited us to be a part of Gateway, and lent us your talented staff to fix the community mural to the wall. Thank you for letting us have a try at something new in Merredin. It means so much to have your support. To the Community Garden, thank you so much for sharing your space with us. It was wonderful to be amongst your gorgeous gardens while making art. You have made a beautiful oasis in Merredin, and we are lucky to have people with your knowledge and passion in Merredin.

To our Facebook followers, digital friends, survey responders, and regional arts organisations across the state, thank you for your input! A community project takes a community to make it! Your thoughtful and honest survey responses were what designed the project, and we look forward to putting your ideas towards future programs. To our funding partners Lotterywest and DLGSCI. Without your generous investment, we could not have achieved as much as we did in 8 months. 2 Murals, 5 paste ups, over 100 hours of workshops, with over 100 participants, new friendships, new skills, lots of laughs, and a lot of pride. Thank you for supporting projects in the regions and helping make our communities a great place to live, laugh, and learn.

And to our artists- Lewis, Mel, Chloe and Jess. Thank you for the skills you imparted on Merredin, your patience, passion, and enthusiasm. The feedback we got from participants was overwhelmingly positive, and a

testament to your skills not just as artists, but as facilitators.

This piece of feedback was our favourite, and really captures the atmosphere you worked so hard to create:

"Being with a group, was nice to have people bring different ideas... and being together without fear of failure, encouraged to have a go. We were totally engrossed with our project. Hearing peoples ideas bounce off each other- it was so inviting, and everyone was so inviting. I always wanted to come, I always looked forward to it!"

We have applied for further funding to run community workshops in Merredin over the coming years, and keep our fingers firmly crossed that we

are successful. In the mean time, we wish everyone a happy, healthy, safe, and peaceful holiday season. If you would like to participate in future Meridian Regional Arts Projects, or are a business looking to sponsor community led programs, feel free to contact us at meridianregionalarts@gmail.com

Keep on making!



Paste Ups



Kevin Laser Cutting



Mel Mc Vee mural being painted



Jess Springs Mural Day

SHROVE TUESDAY AND ASH WEDNESDAY

Students at St Mary's celebrated Shrove Tuesday on the 1 March. Shrove Tuesday or Pancake Day is the day before the beginning of Lent and it is traditionally a day of feasting before a forty day period of fasting.

Ash Wednesday marks the beginning of Lent and all students participated in an Ash Wednesday Liturgy. Father Andrew came to school to share the day with the students.



From the History Room

By ANITA METCALF

The following snippets appeared in the local MARCH newspapers of the time.

23rd, 1907: Mr Angel's fine two-storey hotel is now complete. Tenders have been called for the building of a school. There are now about 30 children here. Extremely hot weather is being experienced here lately, the thermometer averaging from 98 (36.6) to 106 (41.1) in the shade.

12th, 1913: The District Surveyor wrote asking the Merredin Road Board to name the streets in the Elabbin town site. The secretary reported the names of pioneer settlers at Elabbin. The 5 streets would be named Clarke, Baird, Wright, Bagot and Rae Streets.

1st, 1934: Preparations are already commencing to make 1934 a special year in Merredin golf history. The Eastern Districts Championships are to be held here this year.

11th, 1948: The new Merredin dance band 'The Krakajacks' made an excellent impression on their first public

performance at the Town Hall. The band is a 5-piece combination.

1951: There are 3 things a woman can make out of nothing: a hat, a salad and a quarrel.

10th, 1965: All residents within the boundaries of the Shire of Merredin, 21 years of age and over, are reminded that they are required to undergo x-ray examination of the chest for tuberculosis.

1st, 1980: March 1 was the 10th anniversary of The Indian Pacific operating on the Sydney -Perth service.

21st, 1990: It was a CROMBIE affair at the Babakin Cricket Club wind-up. Every award was won by a member of the Crombie family. Batting Average – Willie Crombie, Batting Aggregate – Clifton Crombie, Bowling Average – Clifton Crombie, Bowling Aggregate – Grant Crombie, Best Club Man – Clifton Crombie and Most Improved – Scott Crombie.



Bailiwick Legal.

**MERREDIN
LEGAL HOT DESK**

Merredin Community Resource Centre
110 Barrack St

DANIELLE EDWARDS

The team at Bailiwick Legal is excited to launch its new initiative **Regional Legal Hot-Desk.**

Bailiwick Legal practices in the areas of commercial, agribusiness, litigation, dispute resolution, wills & estates, employment & workplace, property, mining & access, and tourism law.

Danielle Edwards grew up in the country and is an Associate at Bailiwick Legal.

Danielle will be in Merredin on the following dates between 9.30am – 3.30pm;

**March 14
May 9
July 18**

To book a free 20-minute consultation please email danielle@bailiwicklegal.com.au or call 0488 727 886

2022 Merredin Show Postponed

By **CLAYTON MURRAY,**
Chairperson Merredin Show

Due to increased public concern and to protect the health of all involved in the Merredin Show, and in response to the Premier's direction that there can't be any organised mass gathering over 500 people, we are postponing the 2022 Merredin Show.

It is obviously disappointing that there is a need to postpone the Show, it is not only our disappointment, but it carries through to everyone involved and the general public who have always supported us so well.

The safety and well-being of everyone, is our priority.

We will be in touch with Entertainers, Exhibitors, sponsors etc plus others who were to be involved to advise of this decision and work with them to obtain the best outcome for all.

We have chosen to initially postpone the Show in the hope that the risk to public health and the health and safety mandates change quickly to enable us to have a show this year.

Postponing a show has a huge financial impact on our organisation as we have already expended a very large amount of money, with no means of

getting it back by actually running the event on the original date.

One of the only ways to get an income to help cover our costs at the moment is to sell all the tickets in our raffle. \$25 gives you a chance in winning your share of the \$8,000 prize money. Call the Merredin Community Resource Centre on 9041 1041 to purchase one, or call in and see them at 110 Barrack Street in Merredin.

We will also be holding a virtual show for stallholders on the 2nd of April and the raffle will be drawn on this day, so please take part. More information regarding this will be released soon.

I personally thank each and every one on our committee plus the Merredin Community Resource Centre for the incredible job they have done to get this event to the point they have. It is going to be great, as it is our goal to make each event better than the previous one.



Image courtesy of Grant Stainer



The
SCOTTISH VARIANT
At least you can hear it coming.

Library Musings

By **WENDY PORTER,** Merredin Librarian

Hello again. Isn't it nice to see the weather starting to cool down? The Merredin Library has had some new items added to stock. Here is a taste.

Nearly everyone has heard of Bert Newton. 'Bert' by Graeme Blundell tells us of the entertaining life of one of Australia's favourite stars. The book takes us through six decades of Bert bringing us laughter, joy, and cheeky irreverence, both on and off the screen.

Have you ever been at a loss about what to pack in your child's lunchbox? 'Back to School Snacks' by the Australian Women's Weekly has some suggestions to change the fretful task of packing a school lunchbox every day. Maybe your child will enjoy 'sushi' wraps (made with pastrami not raw fish), choc beetroot slab cake, craisin toast (made with cranberries) or even apple sandwiches (the apple is the bread).

It's not just the kids who may need to watch what they are eating. 'The fast 800 Keto' by Michael Mosley shows you how to flip your metabolic rate from burning sugar to burning fat for fuel, by combining Keto with the popular Fast 800 diet. The book not only explains the science behind the diet and how to follow it safely, but also provides recipes and menu planners as well.

Remember to ask staff for help if you can't find what you are looking for. If you are unwell, feel free to call the Library on 9041 1222 and arrange for staff to choose some books for you that you can either pick up, or have delivered if you live in town. You could even look up books on the catalogue. If the books you would like are available, staff will select those for you. Check out the catalogue at

<http://library.merredin.wa.gov.au>

See you soon.

MERREDIN MARKETS ON A SATURDAY MORNING?

The Merredin CRC has been running Markets since 2012 on the lawn strip across the road from the CRC, then in front of the Visitor Centre and for the past 6 years on the lawn surrounding the CRC.

The Markets used to be monthly, but feedback from stallholders was it was too often and people didn't seem to want to attend every month, or they did not have enough products.

The Markets were changed to having 2 Twilight Markets in the warmer months of February and November and 2 Sunday Morning Markets in May and August, which have been quite successful the past few years. But we have seen a slight decline in numbers of stalls and

people attending, so we want to get some feedback from the community about the idea of having the Markets on a Saturday morning as it seems a lot of people come into town for shopping or heading off to sport and thought this might be a good opportunity for people to pop into the markets.

We would love to hear from as many people as possible over the next few weeks, as our May Markets are scheduled for Sunday 22 and this might be a good opportunity to trial a Saturday morning.

Please send through your thoughts to administration4@merredincrc.com or phone 90 411 041.

COVID-19 coronavirus

COVID-19 WA Statistics

As at 9 March 2022

Tested 2,658,216

Confirmed Cases 29,839

Recovered 14,077

Deaths 12

Active cases in WA 15,750

COVID-19 in Australia

Vaccinations:

1 Dose 22,093,332 (86%)

Fully Vaccinated 20,524,493 (79.9%)

Booster 11,874,570 (46.2%)

WA—Cases 29,839—Deaths 12

ACT—Cases 56,474 —Deaths 34

NSW—Cases 1.41M—Deaths 1,960

NT—Cases 43,866—Deaths 30

QLD—Cases 608K—Deaths 610

SA—Cases 165K—Deaths 212

TAS—Cases 53,390—Deaths 26

VIC—Cases 1.1M—Deaths 2,611

We're all
in this
together.



From 12.01am Thursday, March 10, WA will move to very high caseload settings to ensure the continuity of operations for critical industries and of face-to-face school-based learning for students.

A critical worker is someone who cannot work at home and who:

- Performs a role that is critical to the COVID-19 response
- Is critical to the continuation of critical services that prevent significant harm (eg loss of life, catastrophic impacts to safety or welfare, lack of access to essential goods)
- Performs a role that is necessary for the safe continuation of services and/or has specialist skills in specified industries deemed critical.

Merredin

Local Government Area (15+)
Western Australia

2,715

15+ population
ABS 2019 ERP

92.0%

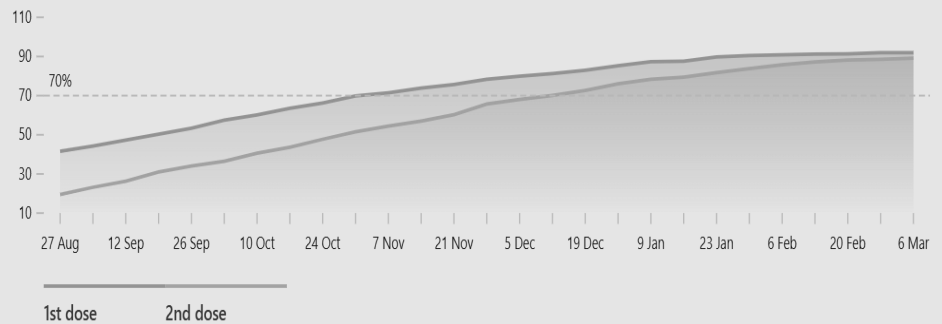
1st dose
(+0.1% 7d)

89.1%

2nd dose
(+0.6% 7d)

Vaccination over time

Last updated 6 Mar 2022



LEVEL 2 PUBLIC HEALTH MEASURES AS FROM 3 MARCH

Masks

Mask wearing requirements expanded to children in Years 3-6 in all public indoor setting (usual exemptions apply)

Gatherings

- Home gatherings limited to a total of 10 people indoors and outdoors, except weddings and funerals
- Private outdoor gatherings in a public space limited to 50 people
- 2 square metre rule and 150 person capacity limit indoors or outdoors for weddings and funerals, and for places of worship—no more than 10 people inside if held at a private residence

Density and capacity limits

- 2 square metre rule and 150 patron limit (not including staff) for the following venues:
 - Hospitality venues (seated service only)
 - Fitness venues
 - Entertainment venues
 - Galleries and museums
 - Places of worship
 - Hairdressers, tattoo parlours and beauty services
 - Nightclubs (seated service only)

2 square meter rule for public venues such as swimming pools and recreation centres.

50 per cent capacity limit for entertainment venues with forward facing seating, such as theatres and cinemas, and for major stadiums, including Optus Stadium, RAC Arena, HBF Stadium (main area) and HBF Park, with mask wearing at stadiums.

4 square metre rule and seated service only for the Crown Casino gaming floor.

Hospitals, aged and disability care facilities

- Limit of 2 visitors per resident per day to aged care and disability care facilities
- No visitors to hospitals, except for spouses, parents or carers, birth partners or for compassionate reasons

Higher education and colleges

- 2 square meter rule and 150 person capacity limit indoors or outdoors for higher education facilities including pathway colleges and English language schools

Community Sport

- Indoor community sports as per venue requirement, with no spectators, except parents or guardians
- Outdoor community sports permitted with no spectators, except for parents or guardians

Events

- 2 square meter rule and 500 person capacity limit for outdoor public venues and events.

Court Report

16th February 2022

Perth Central Law Courts

Brandon Welshman appeared on a charge of aggravated grievous bodily harm. He was remanded to appear in Perth on the 8th March 2022.

17th February 2022

Bunbury Courthouse

Matthew Jetta appeared on a charge of criminal damage or destruction of property. He was remanded to appear in Bunbury on the 3rd March 2022.

21st February 2022

Northam Courthouse

Locklyn Carroll appeared on one charge not disclosed and two charges of breach of bail (fail to appear soon after). He was remanded to appear in Northam on the 29th March

2022.

Perth Central Law Courts

Scott Blake appeared on a charge of no authority to drive – suspended (other than fines suspension). He was remanded to appear in Midland on the 24th February 2022.

22nd February 2022

Perth Central Law Courts

Melville Verhoeven appeared on charges of driving with prescribed illicit drug in oral fluid or blood, possess a prohibited plant, assault occasioning bodily harm, two charges of disorderly behaviour in public and two charges of being armed or pretending to be armed in a way that may cause fear. He was remanded to appear in Perth on the 22nd March 2022.

23rd February 2022

Perth Central Law Courts

David Engelbrecht appeared on a charge of exceed speed limit between 10 and 19km/h. He was remanded to appear in Perth on the 21st April 2022.

28th February 2022

Kalgoorlie Courthouse

Trevor Jetta appeared on a charge of no authority to drive (disqualified from holding or obtaining). He was remanded to appear in Kalgoorlie on the 24th March 2022.

Northam Courthouse

Tiara Hooker appeared on a charge of common assault in circumstances of aggravation or racial aggravation. She was remanded to appear in Northam on the 4th April 2022.

Craig Thompson appeared on a charge of breach of protective bail conditions and two charges

of common assault in circumstances of aggravation or racial aggravation. He was remanded to appear in Northam on the 27th April 2022.

2nd March 2022

Perth Central Law Courts

Colbey Hetherington appeared on charges of attempt to pervert course of justice and careless driving causing death, grievous bodily harm or bodily harm. He was remanded to appear in Perth on the 12th May 2022.

3rd March 2022

Perth Central Law Courts

Michael Hallett appeared on 21 charges of being a person who was cruel to an animal. He was remanded to appear in Perth on the 9th March 2022.



MCKENZIE
FAMILY FUNERALS
MONUMENTAL WORKS

FUNERAL DIRECTORS AND MONUMENTAL WORKS

MEMBERS OF THE AUSTRALIAN FUNERAL DIRECTORS ASSOCIATION

PHONE: 08 9041 1054 | MARK: 0438 050 692 | TONI: 0401 481 561

EMAIL: MARK.TONI.MCKENZIE@GMAIL.COM
WEBSITE: MCKENZIEFAMILYFUNERALS.COM.AU
10 FIFTH STREET, MERREDIN WA 6415



McKenzieFamilyFunerals



merredin_monumental

Tales from the Rails

By **JANE PATRONI, Chairperson**

In continuing the stories profiling the lives of local people and their employ on the railways, of significance is a recount of events that had a dramatic effect on the life of **Raymond Harvey (Bert) Ventris** and his family. Information for this story has been kindly shared by **Dot Caughey (nee Ventris)**, Bert's daughter. The following is an extract from **Mercury Magazine (3 November 1999, p9)**. Bert Ventris arrived in Merredin (1927) as a 19 year old call boy – a West Australian Government Railways wake up caller for shift workers. He met Vera Carey and they married in 1936 bringing up five children – Ernest, Dorothy, Rosemary, Ronnie and John – all during a difficult period of world war rationing and diminished facilities of health and education.

Bert was an extremely effervescent and active character until a dreadful accident when he was struck by a railway engine, resulting in him lying in a coma suffering

horrific injuries. Miraculously, he survived. The Sunday Times in 1958 carried a photo and story headlined **Perth's Miracle Man**.

Hit by a Perth bound diesel when he stepped from the cabin of the big X Class diesel at Midland Junction on his way from Perth to Kalgoorlie, he sustained multiple injuries including severe head injuries, a double fracture of the jaw, broken nose and serious facial injuries. Bert was unconscious for a week after the accident and on the Danger List at Royal Perth Hospital.

Even though Bert changed physically and in personality, it was a remarkable achievement that he could return to engine driving. In fact, he drove the first Prospector railcar into Kalgoorlie Railway Station.

On retirement Bert joined and rendered exemplary service to the community through the Lions Club of Merredin. His dedicated service to Lions by collecting used postage stamps for Lion charities, was awarded life membership.

He was a life member and former Fairest and Best winner of the Railway Football Club in the Merredin Football Association. Bert was a long time playing member of the Merredin Golf Club and the Merredin Bowling Club. He claimed self-appointment as voluntary maintenance man at St Mary's School and was active in church activities. Bert was also heavily involved with the St John Ambulance Association and an active organiser of the

very popular Railway picnic at Baandee Lakes.

Bert's continued service was further recognised when he was awarded the ultimate honour of a Melvin Jones Fellow Award.

Bert Ventris died at the age of 91 having survived severe work place injuries to become a dedicated contributor to the Merredin community.



Back Row (L to R) Norm Minchin, Les Johnson, Bert Ventris, Allan McKay, Jim Beard, Vince Satie, Gordon (Buck) Griffiths
Front Row (L to R) Jim Medlen, George Beaton, Jack Bramley, Mick Bramley

Tales from the Train

A modern take on travelling by train

By **LADY RANTHAM**

I wonder, does committing inventive murder in your mind, in a variety of interesting ways, lose you a lady point?

This morning I had the good fortune to nab a seat, but the double misfortune of both a squitty sideways train (which you know I don't like) and BroadSheet Boogie sat next to me at the next stop. BroadSheet Boogie is a cross between a new mum who hasn't slept in a fortnight trying to fold a fitted sheet and her hyperactive child with untreated ADHD on a bender of

red cordial and a packet of Whizz Fizz left over from Halloween. Think a manspreader holding an irate octopus. BB sits down and looks like a normal person, who then starts to expand to fill the known universe. BB puts a bag down, gets out a newspaper and starts to manipulate it wildly to try to wrestle the thing into something vaguely readable. Now this sounds reasonable.

What I haven't told you is that BB is a speed reader. So in between the periods of relative calm, only hearing the whizzing noise of their eyes leaving

scorching trails down the page, the paper then takes flight, explodes and starts breakdancing in your personal space, floating in a semi-permanent frenzy of being folded, unfolded, page-turned, folded, turned over, refolded, unfolded and then the whole nightmare starts again. This results in your elbow and shoulder (and occasionally a little side-boob interference) being bumped every 15 seconds with each eruption, and the poor person on the other side of BB is trying to read a book, so has to put up with the intermittent cacophony of

rustling paper, slightly reminiscent of a bag full of angry wasps at war with a threshing machine. I'm lucky in that the noise is slightly mitigated from that by my headphones, but the elbow is slowly bruising as it's not usually a high-traffic area. So you do what everyone does, you try to find the pattern in the chaos. You try to time it, so you know when the next flurry is coming. I scored a perfectly timed interval in which I snuck an elbow under the paper and when it descended back into the reading zone, the corner ripped! I'm pretty sure BookWoman sniggered

EASTER In The PARK

6 APRIL | 0-5 YEARS
APEX PARK, MERREDIN
9.30AM - 11.30AM

FOOD, CRAFTS & ACTIVITIES, AND AN EASTER EGG HUNT!
 WHEATBELT COFFEE VAN WILL BE ATTENDING

WINNERS OF THE COLOURING COMP ANNOUNCED! ENTRIES CLOSE 30 MARCH. PICK UP YOUR COLOURING PAGE FROM ANY OF THE BELOW ORGANISATIONS

SHIRE OF MERREDIN
 belgravialeisure
 reed
 KindiLink
 Health Program
 Government of Western Australia WA Country Health Service
 Amity
 RSPV TO THE MERREDIN LIBRARY ON 9041 1222 BY 4 APRIL

NAREMBEEN TRIATHLON

SATURDAY 26 MARCH 2022
 NAREMBEEN AQUATIC CENTRE, 3.00PM

14 YRS + OPEN SHORT OPEN MEDIUM OPEN ENDURO
 KIDS LITTLE ATHLETES BIGGER ATHLETES HIGH SCHOOL ATHLETES
Kindy, PP, Year 1 + 2 Year 3-6 Year 7-10

NEW KIDS CATEGORY!

Registrations: Entry forms available from the CRC or Shire of NB Website. Entries close Monday, 21 March

Registration fee: \$10 per person (adults) \$5 per person (under 16yrs)

For any enquires please call 9064 7055 or email crcreception@narembeen.wa.gov.au

RANZ College Obstetricians and Gynaecologists Women's Health Mapping Project (WA)



ACCESS TO WOMEN'S HEALTH CARE

What do local women think about accessing women's health care?

On **Wednesday 23rd MARCH** Jade Maddox and Tracy Reibel want to hear your experiences

TWO YARNING CIRCLES (one hour each) **all covid precautions used**

ABORIGINAL Women: 11am
Non-Aboriginal WOMEN: 1pm
All ages welcome (18+)

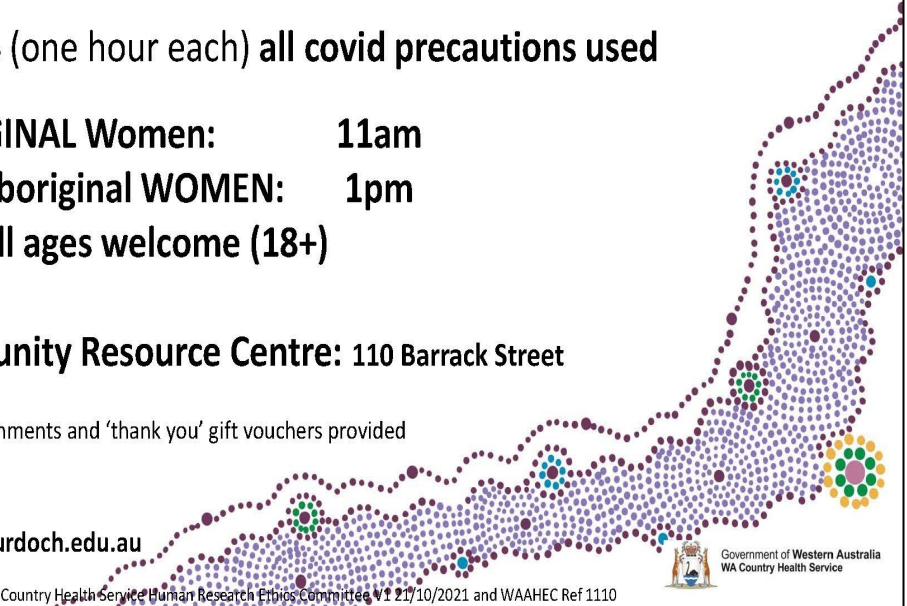
Merredin Community Resource Centre: 110 Barrack Street

Light refreshments and 'thank you' gift vouchers provided

LET US KNOW YOU ARE COMING

Phone Tracy 0439 875 441 or email Tracy.Reibel@murdoch.edu.au

Project Reference # RGS0000004941. This project has been approved by the WA Country Health Service Human Research Ethics Committee V1 21/10/2021 and WAAHEC Ref 1110



THE CUMMINS THEATRE & WHISKEY & BOOTS PRESENTS

MAMA STITCH

STORIES ABOUT MUMS FROM THE COMMUNITY OF MERREDIN



SHOW DATES:

Friday, 18th March | Saturday, 19th March
 Friday, 25th March | Saturday, 26th March
 Thursday March 31st | Friday, 1st April

Doors open at 6PM for tea and toast

LOCATION:

The Cummins Theatre
 31 Bates St, Merredin WA 6415

TICKETS:

\$22 Adult | \$20 Concession | \$15 Student
 Please note: some tickets reserved for family members to book if their mum's story is chosen.

BOOKING INFO:

Book online www.cumminstheatre.com.au
 or in person at Central Wheatbelt Visitors Centre



Department of Local Government, Sport and Cultural Industries



WHISKEY+BOOTS



CUMMINS THEATRE

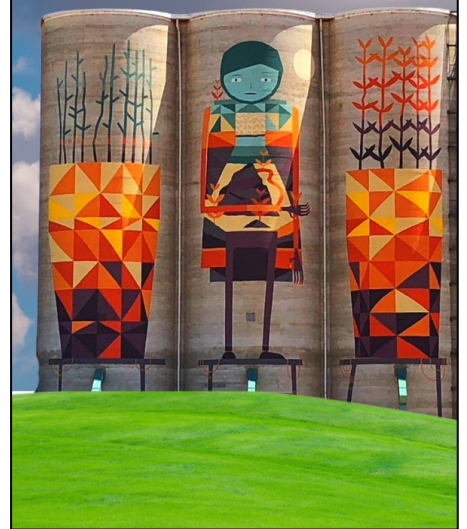


CIRCUITWEST



MERREDIN SHOW 2022

POSTPONED DATE TBA



Suppliers of Agricultural and Industrial Gypsum since 1978



GYPSUM SUPPLIES

www.gypsumsupplies.com.au

Kalannie

HIGH QUALITY / SCREENED

Typical analysis: **Calcium 22.8% Sulphur 17.8%**

Now also operating from **Lake Cowcowing**
 65km NE of Dowerin

Call Daniel Nixon

P 0429 662 004

A/H 9666 2004

BEAUTICIAN



Kate's
TAN & BODY
Tanning & Waxing Specialists

CALL NOW TO BOOK
0427 412 263

CARPENTER



Over 30 years experience in carpentry and all aspects of building work, specialising in roofing/ Colourbond, flooring, decking, pergola's, gutters, downpipes and gazebo's.

For all your remodelling and extension needs, we offer free quotes and design advice. Quality workmanship guaranteed. Fully insured.

A.B.N: 90 648 851 048

Office: 9041 1295 or call Tom on

Mobile: 0487 434 210

Email: t.b.construction8@gmail.com

COMPUTER TECH SUPPORT



STEVE WISE

ABN: 87 897 587 331

COMPUTING TECHNICAL SUPPORT

- COMPUTER REPAIRS
- NETWORKING
- NEW COMPUTERS
- INFECTION & SECURITY
- DATA RECOVERY FROM FAILED DRIVES
- ANNUAL SERVICING & MAINTENANCE
- ADVICE & TRAINING

MOB 0488 979 644
MERREDIN WA
stevewise6415@gmail.com

All work confidential & guaranteed

DENTIST



BRUCE ROCK DENTAL
DR RAM RAJAGOPALAN BDS_{SCWA}
Caring Quality Dentistry

- * General dental care for all ages
- * Crowns, Root Canal & Dentures
- * Accredited Medibank Provider
- * Provider for all health funds
- * HICAPS direct claims
- * Veterans Gold Card provider
- * Subsidy treatment for Aged Pensioners

SERVICING THE WHEATBELT SINCE 1992
TEL 9061 1954

Located at 16 Butcher St., Bruce Rock -
inside the Health Centre
Surgery usually open Mon, Tues, Wed and
2nd THURS BY APPT

EARTH MOVING



SMITH EARTHMOVING PTY LTD

BULLDOZING • GRADING • CIVIL WORKS

KELLERBERRIN WA • 0428 458 121

www.smithearthmoving.com

LAWYER

SARAH SOMERS
LAWYER



Family Law - Divorce - Separation - Property
Settlement - Defacto Relationships
Children's Issues - Contact/Residence
Competitive hourly rates - Reduced fee for
Initial Consultation

Serving the Wheatbelt Community

85 Fitzgerald St, Northam

0427 725 501

sarahsomers@inet.net.au

PAINTER

AWD ENTERPRISES
Painting Contractor

Rego No 2916

Domestic, Commercial, Industrial
Protective Coatings, Insurance

Contact Walter 0411 494 340

walterstrother@hotmail.com

PEST CONTROL



Domestic and Commercial

LOCALLY OWNED AND OPERATED
SERVICING THE WHEATBELT

Phone Deon or Leah King

Phone/Fax: (08) 9041 2018

Mobile: 0428 412 018

Email: kingz4@bigpond.net.au

PO Box 313 MERREDIN WA 6415

PHD Lic 311 / ABN 58 438 967 068

PHOTOCOPIERS COMMERCIAL

COPIER SUPPORT

Canon SERVICE SALES
and CONSUMABLES

08 9041 5104

SPECIALISED PHOTO PRINTING
and **LARGE FORMAT PRINTING**

jdrew@merredin.agn.net.au

TRADES PRICES

12 EDITIONS \$15 EA

6 EDITIONS \$20 EA

3 EDITIONS \$25 EA

Drive carefully...



...we can wait



**PERTH MONUMENTAL
WORKS**

'Supplying the wheatbelt
since 1955'

Phone 9478 2633

Specializing in Bruce Rock Granite
Memorials



www.perthmonumentalworks.com

ZUMBA
FITNESS

**EXTRA, EXTRA!
IT'S ZUMBA
FITNESS TIME**

**\$12
FOR 1 HOUR**

CLASS INSTRUCTOR SHAREE COOK

Made with PosterMyWall.com

We know your soil because we **dig deeper** into the data



Soil test with inSITE, our industry leading soil analysis program

- Independent laboratory.
- Rapid turnaround times.
- Wide range of analytes measured.
- Product recommendations based on results.
- Support from your experienced Area Manager.
- View results on SummitConnect.
- Customer owned data.



**Speak with Kobus
to learn more**





Mobile: 0427 766 508 **Email:** kmarais@summitfertz.com.au



**COMMUNITY CALENDAR proudly sponsored by
Collgar Community Fund**

Find out more about the Collgar Community Fund by
visiting www.collgarwindfarm.com.au

Saturday	Sunday	Monday	Tuesday	Wednesday	Thursday	Friday
<p>12 March</p> <p>Merredin</p> <p>Merredin Branch of the Wildflower Society walk 8.30am meet at the Merredin Golf Clubhouse on Telfer Road (approx. 2 hours)</p> <p>Seventh-day Adventist Church 11am</p> <p>Merredin Fine Arts Society 9am-12pm Check out their Facebook page for further details</p> <p>St Mary's Catholic Church - Vigil Mass 6:30pm</p>	<p>13</p> <p>Merredin</p> <p>Community Garden. 8:30am 0427 701 655</p> <p>Merredin Uniting Church 9am and 6pm</p> <p>All Saints Anglican Church 10am</p> <p>Merredin Church of Christ 10am</p> <p>St Mary's Catholic Church Sunday Mass at 10.30am</p>	<p>14</p> <p>Merredin</p> <p>Bootscooting, 7pm at Cummins Theatre 9041 3005 (leave a message), 0409 172 259, or see Lyn at the Post Office</p> <p>A Choired Taste Rehearsal 7pm, at Old North Merredin Primary School</p>	<p>15</p> <p>Merredin</p> <p>Carer's WA Social Support 10-11.30am at Dimensions Café.</p> <p>Gentle Gym at the Senior Centre 2pm</p> <p>Zumba! By Sharee Cook, 6pm - 7pm at the Cummins Theatre, call 0458 429 072</p>	<p>16</p> <p>Merredin</p> <p>Craft Group at the Senior Centre 10am</p>	<p>17</p> <p>Merredin</p> <p><i>St Patrick's Day</i></p>  <p>Community Garden. 8:30am 0427 701 655</p> <p>Morning Tea at the Senior Centre at 10am</p> <p>Men's Shed 2pm - 5pm 0427 831 024</p> <p>Merredin Fine Arts Society 9am-2pm</p>	<p>18</p> <p>Merredin</p> <p><i>World Sleep Day</i></p> <p>Adult Day Care and Emergency Respite Trial 10am-12pm at Seniors Centre. Phone Rosemary 0439 746 300 or Julie 0429 411 377 for details.</p> <p>Kids Club, Ages 4-12, 3pm-5pm at Merredin Church of Christ, 17 Throssell Rd, gold coin donation 0429 108 241</p>
<p>19</p> <p>Merredin</p> <p>Seventh-day Adventist Church 11am</p> <p>Merredin Fine Arts Society 9am-12pm Check out their Facebook page for further details</p> <p>St Mary's Catholic Church - Mass 6:30pm</p>	<p>20</p> <p>Merredin</p> <p>Community Garden. 8:30am 0427 701 655</p> <p>Merredin Uniting Church 9am</p> <p>All Saints Anglican Church 10am</p> <p>Merredin Church of Christ 10am</p> <p>St Mary's Catholic Church Sunday Mass at 10.30am</p> <p>A Choired Taste Workshop 1pm-3pm, sponsored by Collgar Wind Farm, at Old North Merredin Primary School</p>	<p>21</p> <p>Merredin</p> <p><i>National Harmony Day</i></p> <p>Bootscooting, 7pm at Cummins Theatre 9041 3005 (leave a message), 0409 172 259, or see Lyn at the Post Office</p>	<p>22</p> <p>Merredin</p> <p>Gentle Gym at the Senior Centre 2pm</p> <p>Zumba! By Sharee Cook, 6pm - 7pm at the Cummins Theatre, call 0458 429 072</p>	<p>23</p> <p>Merredin</p> <p><i>USA National Puppy Day</i></p> <p>Craft Group at the Senior Centre 10am</p>	<p>24</p> <p>Merredin</p> <p>Community Garden 8:30am 0427 701 655</p> <p>Morning Tea at the Senior Centre at 10am</p> <p>Men's Shed 2pm - 5pm 0427 831 024</p> <p>Merredin Fine Arts Society 9am-2pm Check out their Facebook page for further details</p>	<p>25</p> <p>Merredin</p> <p>Adult Day Care and Emergency Respite Trial 10am-12pm at Seniors Centre. Phone Rosemary 0439 746 300 or Julie 0429 411 377 for details.</p> <p>Kids Club, Ages 4-12, 3pm-5pm at Merredin Church of Christ, 17 Throssell Rd, gold coin donation 0429 108 241</p>
<p>26</p> <p>Merredin</p> <p>Seventh-day Adventist Church 11am</p> <p>Merredin Fine Arts Society 9am-12pm Check out their Facebook page for further details</p> <p>St Mary's Catholic Church - Vigil Mass 6:30pm</p> <p>A Choired Taste - Combined Performance 'Born to Sing' Choir Cummins Theatre</p>	<p>27</p> <p>Merredin</p> <p>Community Garden. 8:30am 0427 701 655</p> <p>Merredin Uniting Church 9am and 6pm</p> <p>All Saints Anglican Church - NO SERVICE</p> <p>Merredin Church of Christ 10am</p> <p>St Mary's Catholic Church Sunday Mass at 10.30am</p>	<p>28</p> <p>Merredin</p> <p>Bootscooting, 7pm at Cummins Theatre 9041 3005 (leave a message), 0409 172 259, or see Lyn at the Post Office</p> <p>A Choired Taste Rehearsal 7pm, at Old North Merredin Primary School</p>	<p>29</p> <p>Merredin</p> <p>Gentle Gym at the Senior Centre 2pm</p> <p>Zumba! By Sharee Cook, 6pm - 7pm at the Cummins Theatre, call 0458 429 072</p>	<p>30</p> <p>Merredin</p> <p>Craft Group at the Senior Centre 10am</p>	<p>31</p> <p>Merredin</p> <p>Community Garden. 8:30am 0427 701 655</p> <p>Morning Tea at the Senior Centre at 10am</p> <p>Men's Shed 2pm - 5pm 0427 831 024</p> <p>Merredin Fine Arts Society 9am-2pm</p> <p>Merredin United in Prayer 7pm at Seventh-day Adventist church</p>	<p>1 April</p> <p>Merredin</p> <p><i>April Fools Day</i></p>  <p>Adult Day Care and Emergency Respite Trial 10am-12pm at Seniors Centre. Phone Rosemary 0439 746 300 or Julie 0429 411 377 for details.</p> <p>Kids Club, Ages 4-12, 3pm-5pm at Merredin Church of Christ, 17 Throssell Rd, gold coin donation 0429 108 241</p>

**If you would like your community notice included.
Email it to administration3@merredincrc.com**

NAREMBEEN MAIN STREET FESTIVAL

Friday, 18 March 2022
4.00PM - LATE

#InspireCreateActivate

KIDS Entertainment
4.00PM



NEW MAIN STREET
ACTIVATION
SPACES

TOWN TEAM TALK
6PM

* Hair Braiding

PAINT STORM
ART SHOW

Bouncy Castle

FACE PAINTING



LIVE MUSIC
With Emmett
6.30pm



Obstacle COURSE




OUTDOOR BAR 6.30PM




“INTO THE LIGHT” CAMERA CLUB MEETING

By GRANT STAINER

“Into the light” was the theme for the February meeting of the Merredin Camera Club, and there were quite a variety of ideas and interpretations of the subject.

Twelve photos filled the theme section for February, and another 12 photos filled the open section. The February judge was Ian Sampson.

In the theme section, Mr Sampson awarded gold to Julie Alvaro’s “Chasing at dusk” and “Grazing after a drink”. Silver was awarded to Grant Stainer’s “Fluid dynamics”, and equal bronze was awarded to four different photos.

In the open section, gold was awarded to Chloe Willcocks’ “Sunset walk” and Kate Caughey’s “Canal Rocks”. Silver was awarded to Glen Riethmuller’s “Rockingham”, Julie Alvaro’s “Amazing Sunday storm”, and Lorraine Ryan’s “Harvest time”. Equal bronze was awarded to five different

photos.

Mr Sampson mentioned a range of areas that can be used to improve photos, particularly relating to composition and cropping.

Club members voted somewhat to the judge in both the theme and open sections.

In the theme section, first place went to Julie Alvaro’s “Grazing after a drink”. Second place went to Grant Stainer’s “Fluid dynamics” and third place went to Kate Caughey’s “Tumbleweed”.

In the club member’s open section voting, first place went to Chloe Willcocks’ “Sunset walk”.

Equal second place went to Kate Caughey’s “Canal Rocks” and Julie Alvaro’s “Amazing Sunday storm”. Third place went to Grant Stainer’s “Wet and bedraggled”.

The next meeting is scheduled for the 9th March, which will be our AGM and 2021 Photo of the

Year judging.

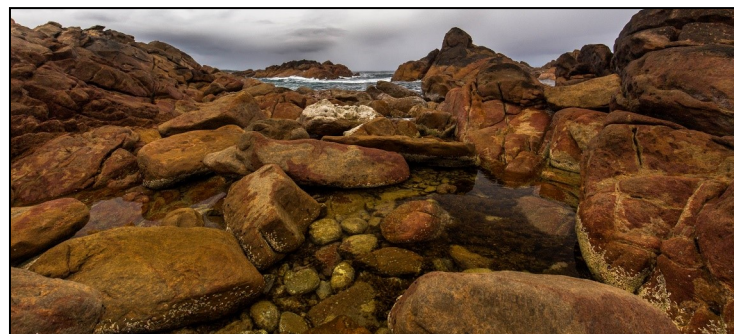
The Merredin Camera Club welcomes new members. For more information about the Merredin Camera Club, please email Kate Caughey at merredincameraclub@yahoo.com.au



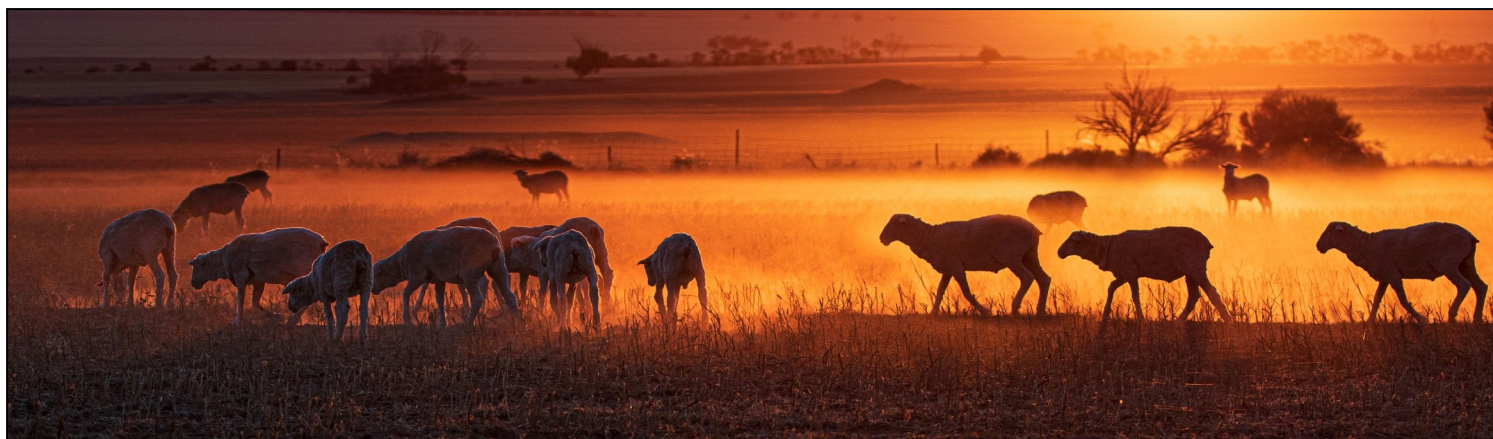
‘Sunset walk’ by Chloe Willcocks



‘Harvest time’ by Lorraine Ryan



‘Canal Rocks’ by Kate Caughey



‘Grazing after a drink’ by Julie Alvaro

Book your next meeting at the Merredin CRC
Affordable room bookings - delicious catering options available
Call 9041 1041 for more information



ADULT DAY CARE AND EMERGENCY RESPITE TRIAL

By JULIE TOWNROW

Friday the 4 March was the beginning of an 8 week trial to gauge the need for Merredin and the surrounding area to establish an Adult Day care and Respite Centre.

During 2019-20, over one million people received support from aged care services in Australia (Dept of Health 2020). Of these 840,000 people used Home support, this program provides entry level services to help people remain independent.

Home Care Packages enable people to remain living at home and in 2020 supported around 175,000 people, of which 67,000 used respite and short term stays in residential respite and 25,000 for short term restorative care.

In the past 10 years the number of people using home care programs has tripled with one in four or 25.6% of Australians in regional and remote locations using aged care services. There are fewer aged care services in rural and remote Australia than in metropolitan regions.

Older people who live in Remote and Very remote areas can face more barriers to accessing aged care services than older people living in Major cities and regional areas. A range of demographic, geographical, climatic, cultural and socioeconomic factors contribute to the complexity of providing high-quality aged care services, especially in rural and remote communities (RDAA 2017).

The proportion of older Australians using mainstream higher level aged care services (that is, residential aged care and home care) tends to decrease as people live more remotely. This may reflect people in rural and remote areas moving to access higher level services that are not available in their community. Mainstream services tend to be

concentrated in more densely populated areas, with almost two-thirds (62%) of permanent residential aged care facilities located in metropolitan areas and only 21% located in rural or remote areas

In the 2018 ABS SDAC, an estimated 647,300 (17%) people aged 65 and over provided informal care and assistance within their household (18% of older men and 17% of older women were primary or secondary carers. Given these statistics, it stands to reason, that we need to care for our Carers, particularly in regional and remote areas to maintain the wellness of carers and keep our aging population living at home for as long as is practicable.

It has been an interesting journey so far, getting to a point where we are able to begin this trial and the support of the Senior Centre has been invaluable. The first week saw 7 people attend the trial with many more enquiries, which is pleasing given the fact that very little publicity was organised prior to the day and we hope that with wider publicity more people can attend.

Although the Senior Centre is a great location to conduct our trial, it is not fully equipped to provide for the trial, areas to slumber are not available, arrangements suited to the variety of conditions experienced by our ageing population are not available at this time.

It has therefore been decided that four hours is a bit too long for participants to remain comfortable and engaged so the time has been altered from 10 am until 2 pm to 10am until 12 noon, this allows for two hours of respite for carers without participants disengaging with the program and its aims.

For each attendee, details will be recorded and include Names, Addresses and Contact details for the purpose of Information

dissemination and use in evidence to support the Needs Assessment. This information will remain private and confidential and not be used for any other purpose apart from Covid Consideration if required.

Each week we will have a different activity, and while I am no expert it is difficult to obtain professional people to provide activities because of omicron and its impact on Health services in general. However we will carry on albeit naively until we can see if the pilot project is worthy of a more formal trial that will seek reportable

outcomes in support of a funding application to establish an Emergency Respite and Day Care Centre in the region.

Volunteers are available to care for your loved ones if you wish to register them for the trial.

If you might require transport from within the Merredin Townsite, please advise either Rosemary or myself and we will arrange to have you picked up and returned home.

Further details can be obtained by contacting Rosemary Lambert on 0439 746 300 or Julie Townrow on 0429411377.

Don't forget to Slip, Slop, Slap,



**Download the free
SunSmart App**

Download the SunSmart app

Protect yourself in **five ways** from skin cancer


SLIP


SLOP


SLAP


SEEK


SLIDE

ARTS PROGRAM RENEWS AND STRENGTHENS LOCAL COMMUNITY CONNECTION

Meridian Regional Arts Incorporated, Community Wide Project 2, Deeper Connections receives \$80,886 funding.

Ten regional and three metro artist-in-residence projects will receive grants through the McGowan Government's \$5 million Creative Communities COVID-19 Recovery Program. The grants aim to strengthen local connection in response to impacts from the COVID-19 pandemic and support a range of initiatives including arts, music, theatre and visual arts.

The Collaboration category has now finished, with the Residency category remaining open for

applications until March 31, 2022.

These projects build greater community connection and resilience through the arts. The 2021 Department of Local Government, Sport and Cultural Industries Culture and Arts Monitor survey found that 87 per cent of people said that the arts make them feel good and 78 per cent feel the arts is valuable for the community.

The Creative Communities Program is supported by Lotterywest and delivered by DLGSC.

Tennis

By MICHELLE GETHIN

The Central Districts Tennis Zone Singles provided a competitive platform for all the mini Ash Bartys and Rafael Nadals out there to test themselves against their peers on Sunday 27th February in Cunderdin. The numbers were again strong in the 10 years & under and the 12 years & under boys sections which made for some incredibly tough matches. One young lad endured three tiebreak matches! It was pleasing to see everyone trying their hardest and there was lots of fantastic sportsmanship on display.

Results

10 years & Under Girls Winner: Greta Gethin (Merredin Districts)

10 years & Under Girls Runner-up: Abigail Bailey (Beverley)

10 years & Under Boys Winner: Matthew Ashworth (York)

10 years & Under Boys Runner-up: Liam Leeson (Meckering)

12 years & Under Girls Winner:

Sadie Draper (York)
12 years & Under Girls Runner Up: Madison Potocznyj (Northam)

12 years & Under Boys Winner: Archie Gethin (Merredin Districts)

12 years & Under Boys Runner-up: Charlie Growden (Merredin Districts)

14 years & Under Girls Winner: Jianna Matres (Northam)

14 years & Under Girls Runner-up: Jonti Leeson (Meckering)

14 years & Under Boys Winner: Jacob Billing (Merredin Districts)

14 years & Under Boys Runner-up: Jayden Oliver (Northam)

The 2021-22 tennis season is fast coming to a close. There is just one more junior tournament in York (Sunday 3rd April) which is followed by CBH Country Week on 9-11th April. Follow the Central Districts Tennis Association Facebook page to keep up to date with all things junior tennis in our area.



Eight local children who competed in Cunderdin. Kate Growden, Greta Gethin, Charlie Growden, Archie Gethin, Thomas Billing, Jim Lee, Jacob Billing and Jordan Billing

Basketball

24th April 2022

Under 12 Girls

Royal Blue (26) d. Lime Green (6)
Orange (20) d. White (15)

Under 12 Boys

Green (19) d. Black (18)
Light Grey (34) d. Sky Blue (12)
Yellow (16) d. Red (11)

Under 16 Girls

Lilac (34) d. Lime Green (27)
Sky Blue (46) d. White (27)

Under 16 Boys

Orange (41) d. Black (36)
Pink (43) d. Yellow (42)
Royal Blue (30) d. Green (21)
Light Grey (24) d. Red (19)

3rd March 2022

Under 12 Girls

Orange (26) d. Royal Blue (6)
White (19) d. Lime Green (4)

Under 12 Boys

Green (30) d. Red (20)
Light Grey (28) d. Yellow (20)
Black (40) d. Sky Blue (5)

Under 16 Girls

Lilac (48) d. Sky blue (46)
Lime Green (40) d. White (39)

Under 16 Boys

Pink (64) d. Royal Blue (41)
Orange (49) d. Green (29)
Red (45) d. Yellow (21)
Black (27) d. Light Grey (25)

2021/22 SEASON LADDER - U12 BOYS									
Team	Played	Win	Loss	Draw	Adj	Points	%	For	Against
TEAM 4 (GREEN)	15	9	6			18	113%	298	264
TEAM 3 (YELLOW)	15	8	6	1		17	124%	327	263
TEAM 5 (BLACK)	15	7	6	2		16	119%	294	248
TEAM 1 (LIGHT GREY)	15	7	7	1		15	100%	267	267
TEAM 2 (SKY BLUE)	15	7	8			14	81%	298	370
TEAM 6 (RED)	15	5	10			10	71%	178	250

2021/22 SEASON LADDER - U12 GIRLS									
Team	Played	Win	Loss	Draw	Adj	Points	%	For	Against
TEAM 2 (ORANGE)	15	14	1			28	236%	357	151
TEAM 4 (WHITE)	15	7	6	2		16	117%	245	210
TEAM 3 (ROYAL BLUE)	15	5	9	1		11	66%	192	293
TEAM 1 (LIME GREEN)	15	2	12	1		5	51%	141	279

2021/22 SEASON LADDER - BOYS U16									
Team	Played	Win	Loss	Draw	Adj	Points	%	For	Against
TEAM 2 (ORANGE)	15	12	3			24	123%	684	555
TEAM 8 (PINK)	15	11	3	1		23	127%	654	515
TEAM 4 (RED)	15	11	3	1	4	19	137%	588	430
TEAM 3 (ROYAL BLUE)	15	7	8		2	12	86%	484	561
TEAM 1 (BLACK)	15	5	10		4	6	86%	406	473
TEAM 7 (LIGHT GREY)	15	5	9	1	6	5	100%	415	413
TEAM 5 (YELLOW)	15	6	9		8	4	80%	430	535
TEAM 6 (GREEN)	15	1	13	1	2	1	69%	396	575

2021/22 SEASON LADDER - GIRLS U16									
Team	Played	Win	Loss	Draw	Adj	Points	%	For	Against
TEAM 3 (LILAC)	15	14	1		6	22	158%	607	383
TEAM 2 (SKY BLUE)	15	8	6	1	4	13	116%	562	485
TEAM 4 (WHITE)	15	5	9	1	2	9	99%	522	527
TEAM 1 (LIME GREEN)	15	2	13		12	-8	59%	369	622

Lawn Bowls

2021/2022 Bowling Season

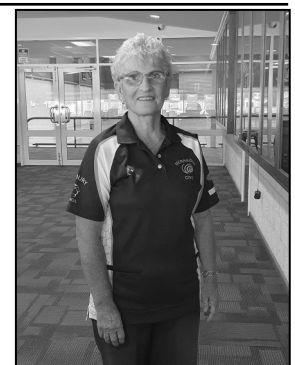
The Men had a good field of competitors who took part in their Singles competition. The final came down to Darren Postans and Scott Cooper, with the winner being Scott Cooper.

The Ladies had some good bowls played on the day of their Singles event with the final coming down to Norma Henderson and Jenny Wolfenden, with the winner being Norma Henderson.

The women in the Civic Bowling Club have qualified 4th in the Pennant Finals to be played at Narembeen on Wednesday the 9th of March. The top three qualifiers are Corrigin Gold Tammin and Corrigin Blue.



Scott Cooper



Norma Henderson

Basketball

MERREDIN BASKETBALL REPRESENTS AT COUNTRY CHAMPIONSHIPS

By **RUSSEL ROBERTS**

The Merredin Basketball Association was excited to again be sending teams off to compete in the Basketball WA Country Championships held on the weekends during February and March. After only sending one team away in 2021, it was great to see a total of six teams comprising players from the age of 9 to almost 40 off to represent the Association.

First up on the weekend of 5th and 6th February was our Under 13 Boys team of Archie Gethin, Ashton Thompson, Brock Barnett, Charlie Growden, Jaxon Bill, Koby Sayers, Nash Garrett, Nicholas Elliot and William Elliot. Unfortunately, they didn't come away with a win for the weekend, but this was the first time playing at a higher level for most of the team, with games against Eaton, Collie, Northam, Byford, Bridgetown and Eaton. They finished Division 3 Pool 2 in 6th position. A big thanks to Kat White for coaching, Erin Elliot as Team Manager and all the other parents who helped over the weekend.

Next on the weekend of 12th and 13th February was our Under 13 Girls team of Camee Roberts, Ellie Atkinson, Gracie Hayes-Thompson, Isabella Stones, Jasmine White, Kate Growden, Leila Hayden, Lilly Townrow and Tamia Cole. They had five wins over Narrogin, Dongara, Manjimup, Busselton and Harvey and a loss to Eaton, finishing Division 3 in 2nd position. They went on to win the Grand Final against Manjimup, with Tamia Cole being awarded MVP of that game – a huge congratulations to the team. A big thanks to Kat White for coaching, Dionne Alberti and Sonya Smith as Team Managers and all the other parents who helped over the weekend.

The weekend of 26th and 27th February saw our Under 16 Boys and Under 18 Boys competing.

The Under 16 Boys team of Angus Townrow, Archer Gardiner, Kurtis Jones, Lincoln Withers, Lucas Griffiths, Olumide Onikola, Xander Boehme and Zion Fogarty. They had three wins over Dongara, Australind and Mandurah and losses to Busselton, Bridgetown, Denmark and Narrogin, finishing Division 3 Pool 1 in 6th position. A big thanks to Ethan Price for coaching, Tom Downsborough as Assistant Coach (unfortunately he was unable to play as still recovering from injury), Janelle Lane as Team Manager and all the parents who helped over the weekend.

The Under 18 Boys team of Bailey Smith, Campbell Gardiner, Connor Davey, Jack Truglio, Kris Hayden Jnr, Malakai Fitzgerald-McIntosh and Noah Hayes-Thompson, had three wins over Busselton, Harvey and Bridgetown and losses to Katanning and Narrogin, finishing Division 3 Pool 1 in 3rd position. A big thanks to Kris Hayden Snr and Michael Hayden for coaching, Philippa Davey as Team Manager and all the other parents who helped out over the weekend.

Finally on the long weekend 5th and 7th March, both our Mens and Womens teams were in action.

The Mens team of Ashton

Kickett, Codan Daddow, Ethan Price, Jessie Price, Kris Hayden Jnr, Kris Hayden Snr, Riley Price and Russell Roberts, had wins over Northam, Pinjarra, Geraldton and Yilgarn and losses to Australind and Waroona, finishing Division 5 Pool 2 in 2nd position. A big thanks to Russell Roberts as Team Manager, Nicola Beck, Phoebe Hayden and Marika Hayden for doing our scoring duties for the weekend.

The Womens team of Courtney Crook, Jasmin Griffiths, Kate Dixon, Lana Drakeford, Nicola Beck, Phoebe Hayden and Rebecca Nelson, had a win over Yilgarn and losses to Waroona, Denmark, Karratha and Busselton, finishing Division 4 Pool 2 in 4th position. A big thanks to Kat White for coaching, Nicola Beck as Team Manager and Marika Hayden for scoring.

The Association would also like to thank Errol McGrath, Lesley Watson and Russell Roberts for coordinating everything this year – there is a lot of work behind the scenes required before we get to playing.

Also a very big thank you to Aviso WA Insurance Brokers for sponsoring new team polo shirts and IGO Limited for sponsoring our junior teams accommodation, your contributions are greatly appreciated and make a big difference to our small Association.



Under 13 Boys



Under 13 Girls – grand final winners



Under 16 Boys



Under 18 Boys



Womens



Mens (their better side!)



betterhealth
program

The Better Health Program is a free, online, healthy lifestyle program for 7-13 year olds who are above a healthy weight and their families.

**FITTER, HEALTHIER
HAPPIER!**

- Free fitness tracker & freebie packs
- Online activity sessions & resources
- One-on-one phone-based health coaching

"With the wonderful help and encouragement from our coach we have made so many positive changes in our diet, in our lifestyle and in our general health and wellbeing."
- Better Health Program Parent

To register or find out more: 1300 822 953
betterhealthprogram.org

Better Health Company
@betterhealthcompany

The Better Health Program is funded by WA Country Health Service.

CLASSIFIEDS

Positions Vacant



Are you a team player?

Come join one of our Community Teams in the Wheatbelt and be supported by your colleagues and an organisation that cares as much about you as we do our customers.

We're looking for compassionate, resilient people who thrive knowing that no two work days will ever be the same!

If you're looking to learn and grow through your work, then take a look at **becoming an Avivo Support Worker.**

Step out of the 9 to 5 and support people in your local area to really live life.

avivo.org.au / work-with-us

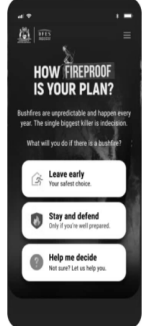
Please call 0400 375 474 if requiring any further information.

HOW FIREPROOF IS YOUR PLAN?

90% of WA is bushfire prone. Bushfires are dangerous and happen every year. The single biggest killer is indecision.

What will you do if there is a bushfire near you?

A bushfire plan can help keep you and your family safe. Create one now in under 15 minutes.



Download My Bushfire Plan App

Access your bushfire plan anytime - even without an internet connection.

Download on the App Store | GET IT ON Google Play

Your watering days

Last digit of house number:	Your 2 watering days are:
1, 8	Wednesday & Saturday
2, 9	Thursday & Sunday
3, 0	Monday & Friday
4	Tuesday & Saturday
5	Wednesday & Sunday
6	Monday & Thursday
7	Tuesday & Friday

Learn more at watercorporation.com.au/wateringdays



Horoscopes



ARIES 21 March—19 April

Being with friends who share something in common with you can be inspirational.



TAURUS 20 April-26 May

It is time to review what you have accomplished and wind-up unfinished business.



GEMINI 21 May-20 June

Let your mind wander and you may be surprised to discover a whole new side to life.



CANCER 21 June-22 July

You have a lot of pent-up energy – use it help someone else and you will feel better too.



LEO 23 July-22 August

You have a lot of pent-up energy – use it help someone else and you will feel better too.



VIRGO 23 August-22 September

It is a month of change where dreams could come true, particularly at work.



LIBRA 23 September-22 October

Changes at home may bring some stress but will eventually lead to contentment.



SCORPIO 23 October-21 November

It is time to focus on creating a harmonious environment in your home.



SAGITTARIUS 22 November-21 December

Unexpected news from your past could prompt you to make a drastic decision.



CAPRICORN 22 December-19 January

A slower pace of thinking, your best course of action this month.



AQUARIUS 20 January-18 February

Communication is key for you now to prevent confusion about expectations.



PISCES 19 February-20 March

Don't be so hard on yourself. Share responsibility with others.

CLASSIFIEDS

Positions Vacant



CREATING AND RETURNING VALUE TO GROWERS

www.cbh.com.au

Receival Point Operator - Area 8

The CBH Group is Australia's largest co-operative and a leader in the Australian grain industry, with operations which extend along the value chain and include grain storage, handling, transport, marketing and processing. We are an equal opportunity employer, committed to providing a safe and rewarding working environment for our people, with a strong culture of developing and enhancing our employees' capabilities. We invite you to become part of a dynamic, diverse organisation with a bright future.

Don't miss your opportunity to become an integral part of the team;

- Safely receiving, storing and unloading grain
- Sampling and assessing the grain
- Identifying contaminated grain
- Maintaining the condition of grain within the storage system through hygiene activities
- Operating and maintaining equipment in a safe and hygienic manner

While the office is based in Merredin, the receival sites are in Warralakin, Nungarin, Hines Hill, Burracoppin, Carrabin, Bodallin, Moorine Rock, Southern Cross and Koonadgin and you may be required at any one of these sites.

Tickets, Skills & Experience:

- Exhibit a strong dedication to working safely;
- Excel in a team orientated environment and communicate professionally;
- Be deemed physically fit in accordance with the CBH operational worker pre-employment medical;
- Be able to work at heights, in confined spaces and in areas with high grain dust concentrations;
- Possess basic computer skills; and
- Hold an unrestricted and valid driver's licence.

Benefits of working for CBH:

- Subsidised health insurance for you and your immediate family
- 13-weeks paid parental leave
- Employee assistance program
- Corporate Employee discounts including travel, financial services and more

CBH supports diversity and encourages applications from people of all backgrounds to be a part of a friendly and inclusive work environment.

If this position is right for you, apply before close of business **Sunday 13 March**. Alternatively, for further information please go to <http://careers.cbh.com.au/>.

CBH requires all candidate to be able to demonstrate they are fully vaccinated against COVID-19 or have a valid medical exemption. Fully vaccinated includes receiving a third booster dose within one (1) month of becoming eligible.

CLASSIFIEDS

Positions Vacant

Aged Care clinical staff wanted

Catholic Homes has been providing aged care for over 50 years in Western Australia and are looking for people to join our Home Care team.

We are looking for caring and passionate clinical staff for our aged care residences and home care services across Western Australia.

Our Care with Purpose people-centred care model promotes dignity, respect, privacy and independence.

As a not-for-profit organisation, we are inclusive and welcome

all faiths and backgrounds.

We offer competitive hourly rates, casual loading and superannuation.

We have both permanent and casual roles available now.

If you would like to discuss further call 1300 244 000 or email your CV to homecare@catholichomes.com



care with purpose

CATH0249

Tractor Driver - Farm Hand

Wheat and Sheep farm experience

Single accommodation provided

Immediate start

Phone: 9061 7027 EVENINGS

**Find the right person for the job.
Advertise your vacant position here.
Call 9041 1041.**

Public Notices

Merredin Repertory Club AGM Tuesday 15th March 7pm, Tivoli Room. All Welcome.

Notice is hereby given that the **Annual General Meeting (and pre-season meeting) of the Naremben & Bruce Rock Darts Association** will be held on Tuesday 15th March 2022 commencing 7.30pm, at the Bruce Rock District Club. It is desirable for there to be a minimum of two representatives from each team present at the meeting, not including the current Executive of the Association. For enquiries, or to give your apologies for being unable to attend this meeting, please contact the undersigned. Mike Darby 0429 498 022 darbygethin3@bigpond.com.

ONE PERSONS TRASH IS
ANOTHER PERSONS
TREASURE

Sell your unwanted goods today call 9041 1041.





We are still in need of rentals for our tenant base.
If you would like more information about leasing your property - Contact us and we would be more than happy to help!
info@asktonym.com.au / 08 9574 2917

FOR SALE



FOR SALE—2 Jackson Way—\$280,000

Spacious 4 bedroom, 2 bathroom double brick family home.

Good sized bedrooms, front and rear patio, brick carport with drive through access to rear yard which is fully fenced yard with a 4.5m x 7m shed .

This home is well worth viewing at this price.

Do yourself a favour and call Sharon Johnson on 0448 108 545 to discuss a viewing or details!

FOR RENT



Furnished 3x1 house—\$340/ week

Fully furnished house, carport and garden shed. Available late March.

Contact us on 9547 2919 or email info@asktonym.com.au for a pre-application.



Unfurnished 3x1 house \$300 / week 3 bedroom house with fully fenced back yard.

Single carport and a U shaped drive way for extra parking. There is a garden shed in the back yard for extra storage.

Contact us on 9574 2917 or email info@asktonym.com.au for a pre-application


Real Estate

Phone - (08) 9041 6510

Fax - (08) 9041 6555

www.elders.com.au/merredin

Will Morris 0448 415 537

Jacqui Burton 0498 457 539

william.morris@elders.com.au
jacqui.burton@elders.com.au

PRICE: \$150,000
AGENT: Elders Real Estate Merredin
CONTACT: Will Morris 0448 415 537
Elders Property ID: 23314952

DEVELOPMENT SITE - THREE FREEHOLD TITLES - 3036m2 TOTAL

Calling all developers looking to build either residential homes or tourist development. The massive demand for rental accommodation of both short stay and long term is only getting bigger. These three freehold green title blocks are residential zoned but have Local Planning Scheme No.6 - Amendment No.6 discretionary approval allowing for tourist development. Ideal for building of group accommodation for large corporate companies or motel operators. Sale price of \$150,000 works out to \$50,000 per quarter acre block.

Genuine buyers are encouraged to discuss further detail with exclusive selling agents Elders Real Estate. Phone the local sales team of Will Morris 0448 415 537 or Jacqui Burton 0498 457 539 for a confidential chat.

1-3-5 Hay Street, MERREDIN


1



Beds

1



Bath

1+



Parking


15 Growden Street, MERREDIN
\$330,000 WEB ID 23330462

Surrounded by beautiful landscaped gardens, this home boasts stunning timber look floor tiles that flow from the formal dining room through to the large family room where you will find a brick built in bar and an enormous freestanding wood fire. There is evaporative air conditioning ducted throughout the home. The kitchen has tonnes of bench space, ample storage, two built in wall ovens and an island bench with gas cook top and range hood. All three bedrooms (two with built in robes) are situated at the north end of the home with views to the front gardens.


20 Coronation Street, MERREDIN
\$420-450,000 WEB ID 23332553

Big 4 bedroom 2 bathroom brick veneer home on a 1,063m2 corner block close to town centre. Built in 1998 this home offers a formal entrance opening onto a large open plan living space with formal dining and large kitchen with free standing stainless steel gas oven and cooktop. The hot water system is electric with 125L storage, there is ducted evaporative air conditioning throughout, plus 3 reverse cycle split systems installed to the master bedroom, 2nd bedroom and the living area. The front yard is well laid out with low maintenance gardens.


1 Caridi Close, MERREDIN
\$675,000 - WEB ID 23332998

You will fall in love with the crystal chandelier and the Tasmanian oak flooring that greets you at the formal entrance. There is a large office through double doors with built in cabinetry. There is a formal lounge with elegant Victorian ceiling rose. The master bedroom has a huge walk in robe and ensuite complete with luxurious corner spa, while the other three bedrooms with built in robes are all linked via a private hallway and share a centrally located bathroom and separate WC. The kitchen features a huge amount of storage, shoppers entry from the garage and stainless steel appliances.


5 Cummings Crescent, MERREDIN
\$345,000 - WEB ID 23322139

Built in 2005 on a 752 square metre corner block, this 4 bed 2 bath house is in a great location. There is a formal lounge at the entrance of the house with tiled floor and feature ceiling fan. The light and bright kitchen is well appointed with stainless steel appliances and an island bench breakfast bar overlooking the meals and living area which flows onto the outdoor entertaining area in the well fenced rear yard. The master bedroom at the north end of the house has an ensuite and walk in robe while all other bedrooms are down the hall at the south end of the house.

