

36 Bates Street, Merredin  
Phone 9041 3126



Book online

www.karismedicalgroup.com.au

# THE PHOENIX



\$2

Thursday 10th February 2022

Issue 3

## SHIRE OF BRUCE ROCK RECEIVES FUNDING TO REBUILD TOWN'S SUPERMARKET

Five Wheatbelt businesses will share in \$795,000 to strengthen and diversify local economies under round four of the McGowan Government's Regional Economic Development (RED) Grants.

The RED Grants program is a McGowan Government initiative investing \$40.8 million over seven years in locally-driven projects to stimulate economic growth in the regions.

A \$105,000 grant will support the Shire of Bruce Rock's rebuild of the town's supermarket, providing a crucial boost to the local economy after the original was destroyed by fire in March 2020.

Research, development and consulting company Living Farm will receive \$200,000 towards establishing its new head office and operations centre in York, allowing the business to expand and provide significant ongoing economic benefits to the region.

Prefabricated modular home builder Evoke Living Homes will receive \$200,000 for construction of a new purpose-built undercover manufacturing facility in Northam.

The project will allow the innovative local business to manufacture homes in all weather conditions, boosting regional housing stock.

Noongar Land Enterprise's Boola Boornap tree nursery will

receive \$100,000 to contribute to facility upgrades, enabling increased production of native tree seedlings and accreditation for direct sales to the public.

Regional Development Minister Alannah MacTiernan said

"The latest round of RED Grant funding builds on the Wheatbelt's local capacity, ensuring businesses remain in the region, boosting jobs and supporting the long-term

growth of communities.

"The construction of the Bruce Rock supermarket will not only increase the number of local jobs but provides additional investment opportunities and long-term social and economic benefits for the community.

These grants have played a fundamental role in driving the growth of Wheatbelt jobs, businesses and emerging local industries.



Phone appointments available

We are open  
9am - 5pm Monday to Thursday  
8.30am - 3pm Friday

91 Todd St, PO Box 818, Merredin  
Phone: 08 9041 2900 or 08 9041 4151  
Fax: 08 9041 4888  
Email: admin.mmc@westnet.com.au  
Facebook: Merredin Medical Centre



Dr Jonathan Ruiz MD, VGDWH, MACEP, FPCEMAC



Dr Mirielsa Nufable-Ruiz MGGS, DPPS, DCH, VGDWH, FRACGP



Dr Alan Roustami MD, AMC



## Merredin Medical Centre



## GET 10 CENTS EACH FOR YOUR CONTAINERS AT WHEATBELT CASH FOR CONTAINERS

WEDNESDAY	12.00PM	TO	5.00PM
THURSDAY	12.00PM	TO	5.00PM
FRIDAY	12.00PM	TO	5.00PM
SATURDAY	9.00AM	TO	1.00PM

GET YOUR REFUND AT  
3 BENSON ROAD, MERREDIN

BOOKINGS ESSENTIAL FOR  
BULK QUANTITIES.  
(APPOINTMENTS AVAILABLE FROM 8.00AM  
ONWARDS TUESDAY TO FRIDAY)



AUTHORISED  
REFUND POINT

Visit [containersforchange.com.au](https://containersforchange.com.au)  
to find out more and  
create your scheme ID

PHONE 0429 467 178 OR EMAIL  
[CASHFORCONTAINERS@OUTLOOK.COM](mailto:CASHFORCONTAINERS@OUTLOOK.COM)  
TO MAKE A BOOKING.



# Feet With Flair

**MASSIVE SUMMER SALE**  
**Summer Sandals, Sneakers &**  
**Accessories**  
**Pop Up Shop,**  
**Atkinson's, Merredin**  
**Wednesday 16th Feb 11.00-5.00**  
**Thursday 17th Feb 9.00-4.30**

# CONTENTS

Police Report.....	5
COVID 19 Statistics .....	6
Court Report .....	7 & 8
My Thoughts .....	8
Tales from the Rails .....	9
Tales from the Train .....	9
Library Musings .....	10
From the History Room.....	10
Trades .....	13
Collgar Community Calendar...	15
Astronomy .....	16
Horoscopes .....	21



Produced and printed fortnightly by  
**Merredin Community Resource Centre**  
 110 Barrack Street, Merredin  
 Ph: 9041 1041 Fax: 9041 1042

**Deadlines**  
**Articles, Advertisements**  
 (including Classifieds)  
**5pm Monday before publication date**

**Content/production**  
 Kirsty Rochford  
 administration@merredincrc.com  
**Content/production**  
 Debbie Morris  
 merredin@crc.net.au  
**Advertising**  
 administration4@merredincrc.com

**Upcoming Editions**  
**24th February 2022**  
**10th March 2022**

[www.phoenixnews.com.au](http://www.phoenixnews.com.au)

## The Phoenix Prices

<b>Prime Advertising</b>	
Front	\$150
Back Full page	\$200
Ears	\$30
Front inside full	\$180
Back inside full	\$180
<b>Colour</b>	
Quarter	\$40
Half	\$80
Full	\$160
<b>Black &amp; White</b>	
Quarter	\$30
Half	\$60
Full	\$120
<b>Classies (b/w)</b>	
Non business for sale	free
General lineage	50c per word
<b>Display per cm</b>	
Public Notice	\$10
Employment	\$5
<b>Trades</b>	
12 editions (each)	\$15
6 editions (each)	\$20
3 editions (each)	\$25
<b>Artwork</b>	
Fee	\$30

*Book 12 consecutive editions or  
 more to receive 5% off*

## The Phoenix

Available at the following outlets:

BP Travel Stop  
 Café 56  
 Cutting Room  
 Dimensions  
 Go MAD  
 IGA  
 Inspire  
 Merredin Bakery  
 Merredin CRC  
 Merredin Flowers  
 Merredin Harvest  
 Merredin Swimming Pool  
 Nextra  
 Puma Roadhouse  
 Two Dogs Home Hardware  
 Wild Poppy Café

Thankyou to these businesses for their  
 support for The Phoenix and Merredin  
 Community Resource Centre

## ONLINE SUBSCRIPTIONS

Email  
**administration4@merredincrc.com**  
**12 or 24 editions**

## Write a Letter to the Editor

Email  
**administration  
 @merredincrc.com**

**Call 9041 1041**

# Donate your 10 cent refund to a community group

CWA of WA (Inc) – C10240442

Merredin College P&C Association - C10349064

Merredin Community Garden Group Inc. (MCGG) - C10358700

Merredin Community Resource Centre - C10242783

Merredin Districts Lawn Tennis Club - C10322072

Merredin Hockey Club - C10330862

Merredin Railways Tennis Club - C10336486

Merredin Repertory Club - C1032349

Merredin Show - C10360791

Nangeenan Hall - C10481734

Parnana Pikurtu Wildlife Sanctuary - C10305338

St Mary's PS - C10323720

### ELIGIBLE CONTAINERS

Most glass, plastic, aluminium, steel and paper-based cartons between 150mL and 3L



# 2022 SCHOOL YEAR

## February is Ovarian Cancer Awareness Month



It has been an exciting start to the 2022 school year at St Mary's School.

On Friday the whole school celebrated being back at school with a whole school Mass and then that evening everyone

enjoyed the welcome back BBQ held at the Merredin Pool.

At the Monday morning assembly, the Head Boy and Head Girl and Bus Monitors were presented with their badges.



## FUNERAL DIRECTORS AND MONUMENTAL WORKS

MEMBERS OF THE AUSTRALIAN FUNERAL DIRECTORS ASSOCIATION

PHONE: 08 9041 1054 | MARK: 0438 050 692 | TONI: 0401 481 561

EMAIL: [MARK.TONI.MCKENZIE@GMAIL.COM](mailto:MARK.TONI.MCKENZIE@GMAIL.COM)  
WEBSITE: [MCKENZIEFAMILYFUNERALS.COM.AU](http://MCKENZIEFAMILYFUNERALS.COM.AU)  
10 FIFTH STREET, MERREDIN WA 6415



# WELCOME NEW AND RETURNING STAFF



*Amber-Lee Kernaghan, Year 3/4  
Classroom Teacher*



*Chantelle Squire, Pre-primary  
Classroom Teacher*



*Verity Hughes, Humanities  
Teacher*



*Rakesh Gookooluk, Mathematics  
Teacher*



*Dianna Tomazos, Science Teacher*



*Alli Watson, Art Teacher*



*Gaby Paterson, Phys Ed Support*



*Rachel Turner, Murdoch  
University Prac Student—Year 3/4*



*Kate Dufal, Murdoch University  
Prac Student—Year 3/4*



*Tracy Pickering, Principal*

## By HEATH SOUTAR, Senior Sergeant

Hello to all from Merredin Police Station in what has been a busy start to the year.

Overall, our crime figures within the subdistrict are down but we have still had some issues occur in the early part of the year. Crime figures can be accessed at the Western Australian Police Force Internet Site and they are very easy to navigate through.

Burglaries have occurred at the BP Service Station, Barrack Street and the Merredin Golf Club. Several juveniles have been charged with offences relating to the BP Service Station and they will face various judicial processes. Members of the public alerted Police to the fact they were there on site and as a result of a very quick response they were caught committing the offences.

Thank you to the public that called and it just goes to show what can be achieved by having some 'eyes on the street'.

Northam Forensic officers attended the Merredin Golf Club and several items have been sent away for forensic testing. This testing can take some time but we are more than hopeful of some positive results that will identify the offenders and see them facing the courts. Several Golf Carts were used by the offenders and subsequently recovered during the course of the day after the offences occurred.

Stealing and shop theft continues to be a problem in Merredin, but thanks to some great CCTV that is being supplied by victims and vendors, we are usually able to identify the offenders and have them charged. We usually don't have

to much posting of these images on Social Media as the team here at Merredin are quite adept at working out who is who.

Anti-social behaviour is also continuing within the subdistrict with several disturbances being reported, if you see something happening, then please ring us on 131444 and we will do our best to get there as soon as possible. One of our officers was seriously injured recently attending one of these incidents, a male person has been charged with offences and is currently within the courts. The officer, received a fractured leg and is facing a very lengthy recovery before she is back on full duties.

Alcohol and drug effected drivers are still being caught throughout the Wheatbelt and Merredin, if you think you can get away with it, you won't, our

vehicles here and from the surrounding Police Stations are always on the lookout, you will get caught.

We have recently lost two of our officers who have transferred out. Young Tom MATTIN is heading to greener or redder pastures up north, Tom came here as a probationer and is now a very accomplished Police Officer ready to tackle all that will be thrown at him up there, we wish him and his girlfriend all the best. Tyler WINTER, Merredin's 'Citizen of the Year' is being beckoned by the coast. Tyler has achieved so much here at Merredin and will be missed by the community, there were not enough hours in the day for Tyler and he achieved so much here in Merredin. We wish them all the best in the future endeavours.

Stay safe and take care.

## Police Report

# COVID-19 coronavirus

## COVID-19 WA Statistics

As at 9 February 2022

Tested 2,353,277

Confirmed Cases 1,905

Recovered 1,563

Deaths 9

Active cases in WA 333

COVID-19 in Australia

Vaccinations:

1 Dose 21,831,166 (85%)

Fully Vaccinated 20,300,210 (79%)

Booster 9,182,529 (35.7%)

WA—Cases 1,905—Deaths 9

ACT—Cases 39,613 —Deaths 31

NSW—Cases 1.16M—Deaths 1,616

NT—Cases 25,612—Deaths 5

QLD—Cases 470K—Deaths 332

SA—Cases 134K—Deaths 139

TAS—Cases 32,877—Deaths 22

VIC—Cases 944K—Deaths 2,219

We're all  
in this  
together.

## Merredin

Local Government Area (15+)  
Western Australia

2,715

15+ population  
ABS 2019 ERP

90.8%

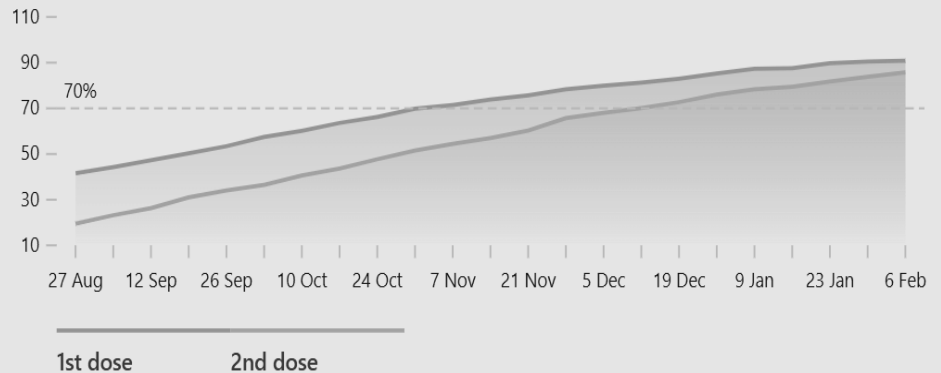
1st dose  
(+0.3% 7d)

85.8%

2nd dose  
(+2.0% 7d)

## Vaccination over time

Last updated 6 Feb 2022



**The app with everything you need to be COVID-19 safe**

Free  
Secure  
Convenient

WA.gov.au

Setting up the ServiceWA app is a comprehensive and secure process using your Digital Identity.

Key steps:

1. **Download the ServiceWA app** from the Apple App Store or Google Play Store.
2. **Open the app and login** using myGovID.  
During this process you will be redirected from the ServiceWA app through the WA Government Digital Identity exchange and the Australian Government Digital Identity System. Here, your identity will be verified using your myGovID, and you will be able to log into the app.
3. **Add your mobile number** once you have authenticated your login through myGovID. The ServiceWA app will send you a text message to verify your phone number, which adds to the security of your account set up.
4. **Account set up is complete** - Once you see this page, you are done.

When you first set up and login to the ServiceWA app, it's important to allow roughly 30 minutes to complete the process.

Once you've completed this initial set up, you can easily enable and access multiple state government services within the ServiceWA app.

## Need Help setting up Service WA app?

Contact Merredin CRC on  
90411041 or email

administration4@merredin  
crc.com and make an  
appointment



# Court Report

## 25th January 2022

### Perth Central Law Courts

Melville Verhoeven appeared on charges of driving with prescribed illicit drug in oral fluid or blood, possessing a prohibited plant, assault occasioning bodily harm, and two charges each of disorderly behaviour in public, and being armed or pretending to be armed in a way that may cause fear. He was remanded to appear in Perth on the 22nd February 2022.

## 31st January 2022

### Northam Courthouse

Reginald Hayden appeared on a charge of no authority to drive – cancelled. He was remanded to appear in Northam on the 14th March 2022.

David Hatch appeared on charges of gains benefit by fraud and stealing as a public servant. The matter was adjourned to appear in Bunbury on the 18th March 2022.

### Perth Central Law Courts

Kyle Brown appeared on charges of no authority to drive (disqualified from holding or obtaining), and reckless driving. He was remanded to appear in Perth on the 14th February 2022.

David Engelbrecht appeared on a charge of exceeding speed limit between 10 and 19km/h. He was remanded to appear in Perth on the 23rd February 2022.

## 7th February 2022

### Kalgoorlie Courthouse

Logan Olney-Kemp appeared on a charge of no authority to drive (disqualified from holding or obtaining). He was remanded to appear in Kalgoorlie on the 28th February 2022.

## 9th February 2022

### Merredin Courthouse

Michelle Abrahams appeared on a charge of reckless driving. The matter was adjourned to appear in Merredin on the 7<sup>th</sup> April 2022.

Peter Brown appeared on 3 charges of gains benefit by fraud and stealing as a servant. He was remanded to appear in Merredin on the 6<sup>th</sup> April 2022.

Locklyn Carroll appeared on 2 counts of a breach of bail (fail to appear soon after) and unlawful & indecent assault. He was remanded to appear in Northam on the 14<sup>th</sup> February 2022.

Max Carter was convicted of exceeding 0.08g alcohol per 100ml of blood. He was fined \$1,000 and had his licence suspended for 8 months.

Jason Coles was convicted of 2 counts of stealing. He was fined \$600, ordered to pay \$259.30 costs and to pay \$189.92 in compensation.

Shane Cull appeared on a charge of failing to comply with a requirement to provide a sample of oral fluid. The matter was adjourned to appear in Merredin on the 10<sup>th</sup> March 2022.

Clive Davis appeared on a charge of damaging property. The matter was adjourned to appear in Merredin on the 10<sup>th</sup> March 2022.

Deep Singh appeared on a charge of possessing a prohibited drug (Heroin). The matter was adjourned to appear on the 10<sup>th</sup> March 2022.

Troy Fitzgerald appeared on charges of making a statement or giving information which was known to be false and indicated a threat, damaging property by graffiti, unlawfully possessing a controlled or prescription drug, stealing, without lawful excuse trespassing on a place and possessing drug paraphernalia in or on which there was a prohibited drug or plant. The matter was adjourned to appear in Merredin on the 10<sup>th</sup> March

2022.

Blake Gray appeared on a charge of having no authority to drive – suspended (other than fines suspension). The matter was adjourned to appear in Merredin on the 1<sup>st</sup> April 2022.

Shauna Hansen appeared on 2 counts of a breach of family violence restraining order. She was remanded to appear in Merredin on the 10<sup>th</sup> March 2022.

Allan Hayden appeared on a charge of unlawful assault and thereby did bodily harm with circumstances of aggravation, 22 counts of a breach of family violence restraining order, a breach of protective bail conditions and assault occasioning bodily harm. He was remanded to appear in Merredin on the 10<sup>th</sup> March 2022.

Bradley Hayden appeared on a charge of common assault in circumstances of aggravation or racial aggravation. The matter was adjourned to appear in Northam on the 28<sup>th</sup> February 2022.

Colbey Hetherington appeared on a charge of careless driving causing death, grievous body harm or bodily harm and attempting to pervert the course of justice. The matter was adjourned to appear in Perth on the 2<sup>nd</sup> March 2022.

Tiara Hooker appeared on a charge of common assault in circumstances of aggravation or racial aggravation. The matter was adjourned to appear in Northam on the 28<sup>th</sup> February 2022.

Irene Jetta appeared on a charge of disorderly behaviour in public. The matter was adjourned to appear in Merredin on the 10<sup>th</sup> March 2022.

Justin Jetta was convicted of unlawful assault and thereby doing bodily harm with circumstances of aggravation and obstructing public officers.

He received a 6 month suspended imprisonment order, suspended for 6 months. He was also convicted of disorderly behaviour in public, was fined \$400 and ordered to pay costs of \$134.50.

Melissa Lawrence appeared on 2 counts of assaulting a public officer, obstructing a public officer and being armed or pretending to be armed in a way that may cause fear. She was remanded to appear in Merredin on the 7<sup>th</sup> April 2022.

Juwan Little was convicted of having no authority to drive (never held), using an unlicensed vehicle on a road and disorderly behaviour in public. He was fined \$800, ordered to pay costs of \$259.30, to pay a half annual licence fee of \$13.40 and had his licence suspended for 3 months.

Scott Paton was convicted of having no authority to drive – suspended (other than fines suspension). He was fined \$1500, ordered to pay costs of \$259.30 and had his license suspended for a further 9 months.

Andrew Reiling was convicted of having no authority to drive (never held) and driving a motor vehicle under the influence of alcohol. He was fined \$3,500, ordered to pay costs of \$259.30 and lost his licence for life.

Wayne Smith was convicted of having no authority to drive – suspended (other than fines suspension), had his licence suspended for a further 9 months, was fined \$1,500 and ordered to pay costs of \$259.30.

Leticia Tasker was convicted of 2 counts of having no authority to drive (never held), was fined \$1,200, ordered to pay costs of \$259.30 and had her licence suspended for 3 months.

Tevita Taumalolo appeared on a charge of criminal damage or destruction of property. He was remanded to appear in Perth on the 25<sup>th</sup> February 2022.

# Court Report

Carissa Wanless appeared on 2 counts of careless driving causing death, grievous bodily harm or bodily harm. The matter was adjourned to appear in Merredin on the 10th March 2022.

Paul Wanless was convicted of exceeding 0.08g of alcohol per 100ml of blood, was fined \$1,750, ordered to pay cost of \$259.30 and had his licence suspended for 10 months.

Megan Watterston appeared on a charge of intent to defraud forges a record. The matter was adjourned to appear in Midland on the 8<sup>th</sup> March 2022.

Paul Wiggan appeared on 2 counts of assaulting a public officer and obstructing public officer. He was remanded to appear in Merredin on the 7<sup>th</sup> April 2022.

# My Thoughts

## CHEERS TO A GREAT 2022

Terry Siva



I'm honoured to be invited to join the Phoenix as a contributor. I've been a supporter from the side lines for a while and it's great to step into the arena and be part of this great publication.

This first column is a bit like the first day of school, a bit of a get to know you and the time of the year to kick off couldn't get any better.

I host the breakfast show on 1098 Triple M and have been in the region for nearly 4 years. I enjoy watching sport and have recently taken up basketball after a long, long time, don't ask about my stats!!

I also like to swim regularly and can handle myself in the kitchen. Although it's been too hot to cook much lately.

And what a crazy time it has been over the last 2 years. But less of that and more of the good stuff.

We've been resilient here in the Central Wheatbelt and we've been fortunate to live close to a normal life.

What I love about being here is the community spirit, whether it's through events, sport, entertainment and other outlets.

It was so good to have some of our regular events back in 2021 with the introduction of the Gateway Merredin Festival, which is a fantastic initiative and long may it continue.

A big shout out to Justin Freind, previously of the Cummins Theatre for sparking the conversation that has started what hopefully will be one of the continuing highlights of the Wheatbelt calendar.

And then of course we have long standing fixtures such as the Show and Gala Night just to name a few. Here's hoping there aren't too many disruptions throughout the year.

Hope you had a well-earned break after harvest and with the kids back so school, some sort of routine returns!

Cheers to a great 2022!



**Donate your containers for the MERREDIN SHOW**


All containers donated at the Merredin CRC trailer will be credited to the Merredin Show during February and March

Scheme ID C10360791




**Senior Centre Morning Tea**

Every Thursday 10am  
Merredin Senior Centre  
15 French Avenue  
*All welcome*



Valentine's Day used to be all diamonds, roses and romance.

Now I'm like, if you REALLY love me, let me sleep in, bring me coffee and tell me how pretty I look in my new yoga pants





## TALES FROM THE RAILS

*RAIL WA 150 – 2021 Celebrating 150<sup>th</sup> Anniversary of  
Railways in Western Australia*

### THE HINES HILL WEIGHBRIDGE

By **JANE PATRONI, Chairperson**

On the back of a busy harvest filled with the sights and sounds of road and rail traffic passing through Merredin 24/7, the business of transporting bulk grain is an accepted logistic. This is a far cry from the sights of the small weighbridge huts that once dotted the routes of the narrow gauge rail networks in WA.

This small hamlet of Hines Hill grew near the siding on the former narrow gauge railway line, 20kms west of Merredin and on the eastern side of Lake Baandee.

The Hines Hill weighbridge is situated on the southern side of the highway at the site of the original grain bin, when wheat was carted by horse and cart in bags. It comprises a corrugated iron building approximately 1.5 x 2.5 metres with a curved roof, a wooden door in the north-east corner and a hatch facing the weighing platform on the east side. The hatch is closed with a boarded shutter. The balancing mechanism remains in place though not operational. The weighing platform has a timber deck and concrete surround; there is still some movement in the platform.

It was one of the first privately owned weighbridges established in the district. It was installed and ready to use by 1st July 1926. In 1939 successive droughts forces ownership to go to the railways and CBH paid fees to use the bridge. Jarrah decking was replaced prior to the 1943-4 season. In 1951 CBH purchased the weighbridge for 50 pounds and used it until the standard

gauge opened in 1966-7. Ron Whitehead bought the bridge paying rates to the WAGR.

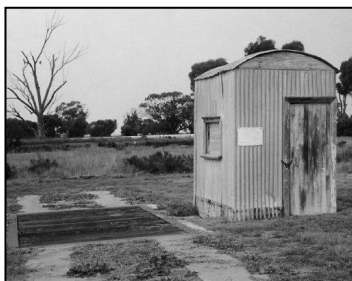
On a recent inspection of the structure, it appears that although the building is padlocked, a sheet of corrugated iron cladding is missing from the rear, some timber framing is broken, flooring boards have rotted and deteriorated.

In an attempt to arrest the further deterioration of the Hines Hill weighbridge, the Railway Museum will discuss avenues to facilitate its full or partial restoration with the Shire.

*On 14 January 1996, Hines Hill was the site of a horrific rail crash.*

A National Rail train in one direction misjudged the stop and went past the red signal, hitting the last wagons of the Westrail train. These wagons contained diesel which burst into flames. The driver and guest passenger were killed. In the aftermath the signalling was altered to prevent trains entering the crossing loop simultaneously. Since the accident, the crossing loop at Hines Hill was lengthened for longer trains.

*Hines Hill – a small hamlet with a big agricultural and rail history.*



## Tales from the Train

### *A modern take on travelling by train*

By **LADY RANTHAM**

Pole Position.

When you are a regular train commuter going a decent distance, you work out the system pretty quickly.

The secret to scoring a decent (or indeed ANY) seat is to achieve Prime Pole Position on the Platform. Henceforth referred to as 4P.

Now I know my afternoon train and have worked out the sweet 4P spot at the Perth Underground and arrived there first as the previous Cockburn train left, so perfectly timed.

Engage Smug Mode. A few others joined me as the minutes ticked down to the critical moment that the train arrived.

As the metal behemoth rounded that final bend into the station that makes the track shriek in that unearthly audio zone that makes the ear shut down protectively and the bladder clench with unease, there was a fair crowd of us. I am not worried. I'm in 4P. The doors will open right next to me, clear for the disembarking throng and in perfect position to curl into the double seat of my choice.

As the penultimate disgorgers stepped out, with that awkward 'let's not make eye contact please' expression, I felt a disturbance in the force. A human chisel was cleaving her way between the train and the crowd, determinedly forcing her way towards the door, one hand braced on the train, the other elbow scything unsuspecting commuters in less

-4P positions away from the track and bruising not-an-insubstantial- number of unprotected chests.

She arrived right behind me and pressed herself RIGHT up against me. I could feel her both on my thigh and my shoulder. I should mention at this point that I'm wearing a fairly full backpack, so she's curved over my side silhouette like an adhesive poultice, quivering slightly as the last hapless student fled the carriage. She then braced an elbow on the train and levered me away from the door, shoving me powerfully out of her way. I must admit at this point, it was so comically rude that I was laughing.

As I stumbled out of her way, was caught by a handsome blonde in a hot pink polo shirt and helped back to upright, she then got upset at me for laughing!!! I gestured grandly for her to proceed me (for my own safety) and was joined by the crowd in some exasperated side glances and not a few 'tsk's to which she took even more offense.

I have kept an amused smile on the whole journey home as I type this update and glance up occasionally to her glare.

Best thing of all? She ended up being squashed into her seat by a next-generation man-spreading tradie who has been working HARD today, while I scored the diminutive overseas student smelling faintly of jasmine.

Karma. Instant and satisfying.

THE PHOENIX

**YOU are part of OUR  
community. Share your  
story.**

[administration@merredincrc.com](mailto:administration@merredincrc.com)

## WA SENIORS AWARD

The 2021 WA Seniors Awards were presented by the Council on the Ageing (WA) in partnership with the State Government on 25 November.

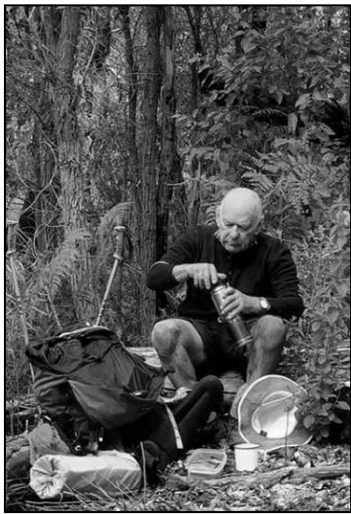
The Minister for Seniors and Ageing Minister Don Punch said the WA Seniors Awards have again recognised the very best individuals, local governments and businesses who contribute to an age-friendly Western Australia. Recognising and celebrating the great value older people bring to community life is so important and the WA Seniors Awards are a great way to celebrate older peoples' contributions.

Contributions of seniors, businesses and local governments celebrated yesterday included James Freeman who was recognised for the many years of volunteer work with the Bibbulmun Track

Foundation.

The annual WA Seniors Awards celebrate and recognise the valued contributions of seniors, businesses and local governments within the community.

James (Jim) Freeman, formerly of Merredin and now living in Mandurah, was the WA Senior of the Year - Regional. Jim was recognised for his 23 years of dedication and volunteer service to the Bibbulmun Track Foundation since its inception in 1997. Jim has volunteered in the Foundation offices, lead events as a guide for the Foundation and maintained parts of the Bibbulmun Track for 20 years, which involved walking sections of the track four times per year, often involving eight-hour return drives from his home in Merredin.



Jim taking a lunch break along the Bibbulmun Track



## Library Musings

By **WENDY PORTER, Merredin Librarian**

Hello all. Life seems determined to keep throwing curve balls, but that won't stop the Merredin Library from receiving new stock on a monthly basis. Here is a taste of what's new.

Have you ever had a cake that had a secret layer? If so, did you ever wonder how it was made? Wonder no more! *'Secret-layer cakes'* by Dini Kodippili shows you how to make your cakes exciting again with hidden layers of brownie, cookie, mousse, pudding, fruit and more. Maybe you would like a 'blackout brownie red velvet cheesecake', or a 'fudgy pistachio baklava cake'? Perhaps a 'Ceylon Cinnamon Chocolate meringue cake' or a 'Nutella and berry queen of puddings' is more to your liking? Try it and see.

Now that kids are back at school, do you dread their upcoming maths homework? Adam Spencer's *'Maths 101'* gives you the answers to all those curly questions that your primary child may ask. Questions such as 'Mum, why isn't 1 a prime number?' are answered. This book is aligned

to the Australian mathematics primary school curriculum, and even adds in some fun activities to help your child learn.

*'The Bushwhackers big Australian Songbook'* compiled by Dobe Newton is a collection of some of the best-loved folk songs in Australia. Have a go at playing and singing the 'Wild Colonial Boy', 'The Band Played Waltzing Matilda' and 'Click Go The Shears'. The book features music, lyrics, guitar chords and illustrations, enough to keep anyone entertained for hours.

Remember that all Merredin Library members have access to a range of e-resources 24/7, just ask staff for details! If you are reluctant to come into the library at the moment, take advantage of our 'Call and collect' service. Just give us a call and we will select some books for you. All you have to do is come and collect them. You could even check out our catalogue and ask for an item to be put aside for you. Just ask our friendly staff for help.

The Merredin Library is back to normal hours now, so give us a call on 9041 1222. See you soon.

## From the History Room

By **ANITA METCALF**

From the history room at the Merredin Library, these recipes are from the—Merredin Mercury and Central Districts Index 1931.

*The hardest work of the bush housewife is continually to serve tasty dishes from the same articles.*

**APPLE DOUGH PUDDING**

Peel, core and cut four apples into slices, put the pieces into a basin with 2oz. sugar, ½ lb chopped suet and 1lb flour. Mix to a paste with ½ pint cold water. Steam or boil and serve with either brown sugar or plain sweet sauce.

**APPLE SURPRISE**

Peel six baking apples, scoop out the cores and fill with equal parts of butter and sugar moistened with a few drops of lemon juice. Make a batter of two eggs, two heaped teaspoons of flour, the same measure of sugar and a gill of milk. Pour this over the apples and bake in a slow oven for one hour. Before serving dust with sugar.

**FRIED APPLES**

Peel and cut apples into rings, fry in boiling fat about five minutes. Serve with pork chops, sausages or curries, or as a second vegetable.

## IT'S SNAKE SEASON

By **WHEATBELT NATURAL RESOURCE MANAGEMENT**

With the days getting longer and warmer, snakes are on the move and it is important to look out for your safety, but most of the time when we see these guys they are just catching some rays or passing through.

Many snakes actually lead a very quiet life over winter and settle down somewhere, only emerging occasionally to feed.

Over the first warm days of spring though, they start becoming more active again and are commonly seen warming up in the sun or out and about on the search for mates and summer feeding grounds.

A diverse range of more than 25 snake species inhabit the Wheatbelt and while technically more than half of those are venomous, only eight species in the region are considered to be dangerous to humans.

The remaining 17 or so are either non-venomous or likely to only cause local swelling and discomfort.

The Wheatbelt is also home to nearly a dozen legless lizards which are commonly mistaken for snakes.

As an important part of the ecosystem, snakes are great at cleaning up pests like rats, mice

and rabbits, and in turn provide food for raptors, goannas and other animals. They typically feed on small mammals, birds, rodents, frogs, skinks and insects. Some even live underground and eat termites and ant larvae. Pythons (non-venomous) often inhabit roof spaces and sheds and can be a great snake to have around as they clean up mice and other vermin.

Other more dangerous snakes like Dugites, Gwardars and King Brown (Mulga) snakes will also be attracted to areas where prey occur, such as rock or wood piles, sheds and loose stacked metal sheeting. Tiger snakes will often be drawn to ponds and shade houses too as they search for frogs.

As a result, snakes are often in the vicinity of humans, pets and livestock, but they will typically avoid conflict when they can, and as long as they have an escape route will generally leave anything larger than themselves alone.

Most bites occur when people try to kill or capture a snake, or the snake is cornered or trodden on, so the best tactic is to give any snake a wide berth and allow it to move on.

Several products are available which can be used to deter snakes from around your house, shed or other key areas,

including spray mixtures and solar-powered garden spikes which emit pulsing vibrations through the ground around them. Keeping grass short, removing any rubbish piles or building material and keeping chook pens and bird cages clean and free of excess grain that would attract rodents is also helpful in reducing the risk of snakes around your home.

Although we have many venomous snakes in Western Australia and some are lethally dangerous, there are also many snakes that are harmless, but identifying which is which is difficult as they can look remarkably similar. If you have a snake trapped in your house or garden it is best not to try and remove it yourself.

There are a number of specially trained volunteer snake removers you can get in touch with through the Wildcare Helpline on (08) 9474 9055.

For pets or working animals that appear unwell after spending time in the bush or near risk areas, or that have been seen interacting with a snake, veterinary attention should be sought straight away. If you or another person has been bitten by a snake (or may have been) it is important to stay calm and still, apply pressure and a firm bandage to the area, and call for immediate medical assistance.

You can find out more about snakebite symptoms and first aid in the factsheet from St John Ambulance.



*Suppliers of Agricultural and Industrial Gypsum since 1978*



**GYPSUM  
SUPPLIES**

[www.gypsumsupplies.com.au](http://www.gypsumsupplies.com.au)

**Kalannie**

**HIGH QUALITY / SCREENED**

Typical analysis: **Calcium 22.8% Sulphur 17.8%**

Now also operating from **Lake Cowcowing**  
**65km NE of Dowerin**

Call Daniel Nixon

**P** 0429 662 004

**A/H** 9666 2004



## Eric Hind Music Scholarship

Applications are now open for the 2022 'Eric Hind Music Scholarship'. This annual music scholarship is awarded to a young talented music student to the value of \$1,000. It is awarded by the Shire of Merredin and named in honour of Mr Eric Hind as recognition and acknowledgement for his contribution to the Shire as a Councillor and his accomplishments as a violinist.

Applicants must be aged 7 – 20 years and be a music student. An applicant must reside in Merredin or alternatively, they may be a boarding school student who has previously been a student at Merredin College or St Mary's Primary School.

All applications must be received at the Shire of Merredin Administration Centre, cnr King & Bates Streets or via email to [ea@merredin.wa.gov.au](mailto:ea@merredin.wa.gov.au).

**Details for how to apply are available on the Shire website - visit [www.merredin.wa.gov.au](http://www.merredin.wa.gov.au). Applications close 28 February 2022.**





**NOW ACCEPTING APPLICATIONS**

SHIRE OF  
**MERREDIN**  
INNOVATING THE WHEATBELT

## COMMUNITY FUNDING GRANT PROGRAM 2022/23

### DOES YOUR COMMUNITY GROUP DESIRE FUNDING FOR A PROJECT?

Every year, the Shire of Merredin makes an allocation in its Annual Budget to provide funding to community groups for a variety of projects. We are pleased to announce that applications are now open for the 2022 Community Grant Funding Program. Applications must be received by Monday, 14 March 2022 at 5.00pm. Please note, late applications will not be considered.

#### Who can apply for funding?

To be eligible, you must be based in the Shire of Merredin and either an incorporated body or to be auspiced by an incorporated organisation.

#### What projects can be funded?

The community funding grant program will fund infrastructure, events or activities as relevant to your project, and alignment with the Shire's strategic vision. Examples of previous projects that funding was allocated to include:

- The installation of cabinet work at the Merredin Military Museum;
- In-kind support for events including the Merredin Show and Song Fest; and
- Specialised public art at Merredin College.

Download an Application Form from the Shire website via [bit.ly/CommunityFundingGrants](https://bit.ly/CommunityFundingGrants)

**For more information please contact Andrina at the Shire**  
Telephone: (08) 9041 1611 | [dceo@merredin.wa.gov.au](mailto:dceo@merredin.wa.gov.au) | [www.merredin.wa.gov.au](http://www.merredin.wa.gov.au)

We know your soil because we **dig deeper** into the data

Soil test with inSITE, our industry leading soil analysis program

- Independent laboratory.
- Rapid turnaround times.
- Wide range of analytes measured.
- Product recommendations based on results.
- Support from your experienced Area Manager.
- View results on SummitConnect.
- Customer owned data.



Speak with Kobus  
to learn more

**Mobile:** 0427 766 508 **Email:** [kmarais@summitfertz.com.au](mailto:kmarais@summitfertz.com.au)

## BEAUTICIAN



**Kate's**  
TAN & BODY  
Tanning & Waxing Specialists

**CALL NOW TO BOOK**  
**0427 412 263**

## CARPENTER



**T & B Construction**

Over 30 years experience in carpentry and all aspects of building work, specialising in roofing/ Colourbond, flooring, decking, pergola's, gutters, downpipes and gazebo's.

For all your remodelling and extension needs, we offer free quotes and design advice. Quality workmanship guaranteed. Fully insured.

A.B.N: 90 648 851 048  
Office: 9041 1295 or call Tom on  
Mobile: 0487 434 210  
Email: [t.b.construction8@gmail.com](mailto:t.b.construction8@gmail.com)

## COMPUTER TECH SUPPORT



**STEVE WISE**  
ABN: 87 897 587 331


**COMPUTING TECHNICAL SUPPORT**

- COMPUTER REPAIRS
- NETWORKING
- NEW COMPUTERS
- INFECTION & SECURITY
- DATA RECOVERY FROM FAILED DRIVES
- ANNUAL SERVICING & MAINTENANCE
- ADVICE & TRAINING

MOB 0488 979 644  
MERREDIN WA  
[steveWISE6415@gmail.com](mailto:steveWISE6415@gmail.com)

*All work confidential & guaranteed*

## DENTIST



**BRUCE ROCK DENTAL**  
DR RAM RAJAGOPALAN BDS<sup>c</sup>WA  
*Caring Quality Dentistry*

- \* General dental care for all ages
- \* Crowns, Root Canal & Dentures
- \* Accredited Medibank Provider
- \* Provider for all health funds
- \* HICAPS direct claims
- \* Veterans Gold Card provider
- \* Subsidy treatment for Aged Pensioners

SERVICING THE WHEATBELT SINCE 1992  
TEL 9061 1954

Located at 16 Butcher St, Bruce Rock -  
inside the Health Centre  
Surgery usually open Mon, Tues, Wed and  
2nd THURS BY APPT

## EARTH MOVING



**SMITH EARTHMOVING PTY LTD**  
BULLDOZING • GRADING • CIVIL WORKS

KELLERBERRIN WA • 0428 458 121  
[www.smithearthmoving.com](http://www.smithearthmoving.com)

## LAWYER



**SARAH SOMEF**  
**LAWYER**

Family Law - Divorce - Separation - Property Settlement - Defacto Relationships  
Children's Issues - Contact/Residence  
Competitive hourly rates - Reduced fee for Initial Consultation

*Serving the Wheatbelt Community*

85 Fitzgerald St, Northam  
0427 725 501  
[sarahsomers@inet.net.au](mailto:sarahsomers@inet.net.au)

## PAINTER

**AWD ENTERPRISES**  
**Painting Contractor**

Rego No 2916

Domestic, Commercial, Industrial  
Protective Coatings, Insurance

Contact Walter 0411 494 340  
[walterstrother@hotmail.com](mailto:walterstrother@hotmail.com)

## PEST CONTROL



**LOCAL PEST CONTROL**  
Domestic and Commercial

LOCALLY OWNED AND OPERATED  
SERVICING THE WHEATBELT

Phone Deon or Leah King  
Phone/Fax: (08) 9041 2018  
Mobile: 0428 412 018  
Email: [kingz4@bigpond.net.au](mailto:kingz4@bigpond.net.au)  
PO Box 313 MERREDIN WA 6415  
PHD Lic 311 / ABN 58 438 967 068

## PHOTOCOPIERS COMMERCIAL

**COPIER SUPPORT**  
**Canon** SERVICE SALES  
and CONSUMABLES  
08 9041 5104

**SPECIALISED PHOTO PRINTING**  
and **LARGE FORMAT PRINTING**  
[jdrew@merredin.agn.net.au](mailto:jdrew@merredin.agn.net.au)

## TRADES PRICES

12 EDITIONS \$15 EA  
6 EDITIONS \$20 EA  
3 EDITIONS \$25 EA



**Get the skills for the job you want.**

**ENROL NOW FOR SEMESTER 1**

Come into campus or get a head start by applying on our website. With a range of free and half-price courses to choose from there's something for everyone at TAFE. Plus if you're aged 15-24 or have a concession you won't pay more than \$400, or \$1,200 (for non-concession students).\*

Contact us to discuss your study options and secure your place.

- »Accounting & Bookkeeping
- »Agriculture
- »Business & Bus. Administration
- »Civil Construction
- »Community Services, Youth Work & Counselling
- »General Education
- »Horticulture
- »Information Technology
- »Individual Support (specialising in aged care & disability)
- »Leadership & Management
- »Mental Health
- »Nursing & Allied Health
- »Pre-apprenticeships in Automotive, Heavy Fabrication & Electrotechnology
- »Visual Arts & more!

**LOWER FEES LOCAL SKILLS** Visit our website for a full list of courses  

\*Half-price/free courses vary and eligibility criteria may apply. Visit our website for more information. | RTO 52789

1800 672 700 | 42 Throssell Rd. Merredin | centralregionaltafe.wa.edu.au |   

Drive carefully...



...we can wait 

**PERTH MONUMENTAL WORKS**

'Supplying the wheatbelt since 1955'

**Phone 9478 2633**

Specializing in Bruce Rock Granite Memorials



[www.perthmonumentalworks.com](http://www.perthmonumentalworks.com)



**ZUMBA FITNESS**

**EXTRA, EXTRA! IT'S ZUMBA FITNESS TIME**

**\$12 FOR 1 HOUR**

**CLASS INSTRUCTOR SHAREE COOK**

Made with PosterMyWalls.com

**TURBODRUM FEEDS BETTER - DOESN'T BREAK FOR MACDON D60/65**



**RETRODRUM NEW MODELS H'BEE, JD, CNH MIDWEST ETC MORE GREAT RESULTS**



**PLEASE CALL PHILLBOURNE FOR LATEST PRICES MANUFACTURED BY PHILLBOURNE, MERREDIN (WA)**


**Ph: 08 9041 2066**

**E: [phillbournes@wn.com.au](mailto:phillbournes@wn.com.au)**

TAS409304


**COMMUNITY CALENDAR proudly sponsored by  
Collgar Community Fund**

 Find out more about the Collgar Community Fund by  
visiting [www.collgarwindfarm.com.au](http://www.collgarwindfarm.com.au)

Saturday	Sunday	Monday	Tuesday	Wednesday	Thursday	Friday
<b>12 Feb</b> <b>Merredin</b> Seventh-day Adventist Church 11am  Merredin Fine Arts Society 9am-12pm Check out their Facebook page for further details  St Mary's Catholic Church - Vigil Mass 6:30pm	<b>13</b> <b>Merredin</b> <i>National Apology Day</i>  Community Garden. 8:30am 0427 701 655  Merredin Uniting Church 9am and 6pm  All Saints Anglican Church 9.30am  Merredin Church of Christ 10am  St Mary's Catholic Church Sunday Mass at 10.30am	<b>14</b> <b>Merredin</b> <i>Valentine's Day</i>    A Choired Taste 7pm—9pm at Old North Merredin Primary School  Bootscooting, 7pm at Cummins Theatre 9041 3005 (leave a message), 0409 172 259, or see Lyn at the Post Office	<b>15</b> <b>Merredin</b> Gentle Gym at the Senior Centre 2pm  Carer's WA Social Support 10-11.30am at Dimensions Café  Zumba! By Sharee Cook, 6pm - 7pm at the Cummins Theatre, call 0458 429 072	<b>16</b> <b>Merredin</b> <i>International Lantern Festival</i>  Craft Group at the Senior Centre 10am  Feet With Flair Pop Up Shop at Atkinson's 11am - 5pm	<b>17</b> <b>Merredin</b> Community Garden. 8:30am 0427 701 655  Feet With Flair Pop Up Shop at Atkinson's 9am - 4.30pm  Morning Tea at the Senior Centre at 10am  Men's Shed 2pm - 5pm 0427 831 024  Merredin Fine Arts Society 9am-2pm	<b>18</b> <b>Merredin</b> Kids Club, Ages 4-12, 3pm-5pm at Merredin Church of Christ, 17 Throssell Rd, gold coin donation 0429 108 241
<b>19</b> <b>Merredin</b> Seventh-day Adventist Church 11am  Merredin Fine Arts Society 9am-12pm Check out their Facebook page for further details  St Mary's Catholic Church - Mass 6:30pm  Blue Light Community Charity Ball 6.30pm—Midnight. Tickets <a href="https://www.trybooking.com/BSHKR">https://www.trybooking.com/BSHKR</a>	<b>20</b> <b>Merredin</b> Community Garden. 8:30am 0427 701 655  Merredin Uniting Church 9am  All Saints Anglican Church 9.30am  Merredin Church of Christ 10am  St Mary's Catholic Church Sunday Mass at 10.30am  A Choired Taste Workshop 1pm-3pm, sponsored by Collgar Wind Farm, at Old North Merredin Primary School	<b>21</b> <b>Merredin</b> <i>USA National Sticky Bun Day</i>  Bootscooting, 7pm at Cummins Theatre 9041 3005 (leave a message), 0409 172 259, or see Lyn at the Post Office	<b>22</b> <b>Merredin</b> <i>USA National Sticky Bun Day</i>  Gentle Gym at the Senior Centre 2pm  Zumba! By Sharee Cook, 6pm - 7pm at the Cummins Theatre, call 0458 429 072	<b>23</b> <b>Merredin</b> Craft Group at the Senior Centre 10am	<b>24</b> <b>Merredin</b> Community Garden 8:30am 0427 701 655  Morning Tea at the Senior Centre at 10am  Men's Shed 2pm - 5pm 0427 831 024  Merredin Fine Arts Society 9am-2pm Check out their Facebook page for further details	<b>25</b> <b>Merredin</b> Kids Club, Ages 4-12, 3pm-5pm at Merredin Church of Christ, 17 Throssell Rd, gold coin donation 0429 108 241  Merredin Twilight Markets 5-8pm at the Merredin CRC. Phone 9041 1041 to book a stall
<b>26</b> <b>Merredin</b> <i>USA National Tell a Fairy Tale Day</i>  Seventh-day Adventist Church 11am  Merredin Fine Arts Society 9am-12pm Check out their Facebook page for further details  St Mary's Catholic Church - Vigil Mass 6:30pm	<b>27</b> <b>Merredin</b> Community Garden. 8:30am 0427 701 655  Merredin Uniting Church 9am and 6pm  All Saints Anglican Church 9.30am  Merredin Church of Christ 10am  St Mary's Catholic Church Sunday Mass at 10.30am  A Choired Taste Workshop 1pm-3pm, sponsored by Collgar Wind Farm, at Old North Merredin Primary School	<b>28</b> <b>Merredin</b> Bootscooting, 7pm at Cummins Theatre 9041 3005 (leave a message), 0409 172 259, or see Lyn at the Post Office	<b>1 March</b> <b>Merredin</b> <i>International - Mardi Gras</i>  Gentle Gym at the Senior Centre 2pm  Zumba! By Sharee Cook, 6pm - 7pm at the Cummins Theatre, call 0458 429 072	<b>2</b> <b>Merredin</b> <i>Ash Wednesday</i>  Craft Group at the Senior Centre 10am	<b>3</b> <b>Merredin</b> <i>International World Book Day</i>  Community Garden. 8:30am 0427 701 655  Morning Tea at the Senior Centre at 10am  Men's Shed 2pm - 5pm 0427 831 024  Merredin Fine Arts Society 9am-2pm	<b>4</b> <b>Merredin</b> Kids Club, Ages 4-12, 3pm-5pm at Merredin Church of Christ, 17 Throssell Rd, gold coin donation 0429 108 241

**If you would like your community notice included.  
Email it to [administration3@merredincrc.com](mailto:administration3@merredincrc.com)**

## WTF 10th —23rd FEBRUARY 2022

By **PETER BARRETT**

Welcome back, Watchers of The Firmament.

While I have been on holidays all the planets with the very temporary exception of Jupiter have disappeared from the evening sky and become morning stars. Uranus is also still visible in the evening but is now very faint as it too gradually approaches conjunction. It can be seen from the chart that Jupiter goes from setting 53 minutes after sunset at the beginning of the fortnight to being just 24 minutes behind the sun at the end of the fortnight. Safe to say it too will become a morning star sometime in early March.

Fortunately most of our favourite “fixed stars” are still available for our viewing pleasure.

Unlike the planets, the stars are much more regular in their habits, and they reappear year after year in almost the exact same spot in patterns that have

scarcely changed for thousands of years.

Most of the stars are so far away that even if they were moving at a million kilometres per hour (and some of them have been determined to be moving even faster than that) we would not notice. The sophistication and precision that is required of any instrument used for measuring such things is as breathtaking as the stupendous distances they look into. It has been calculated that even from the viewpoint of our nearest stellar neighbour Alpha Centauri most of the constellations we are familiar with here on earth would still be recognisable, with the sun appearing as a brightish star in the northern constellation of Cassiopeia.

Thus the rise and set times of the “fixed stars” advances at a more or less steady rate of three minutes fifty six seconds a day.

It can be seen from the chart that the planets are rather less regular. Take Mercury for

example. Its rise and set times hardly change at all this week, and next Thursday it appears to start going backwards! What’s going on? Notice that on Saturday the 12th the planet is 50% illuminated. This is a clue that an inner planet has reached its furthest point from the sun from earth’s perspective and has commenced to move behind the sun. It has “turned the corner” from our point of view and because that point of view is edge-on to its orbit we see it begin to move backward toward the sun again. Astrologers call this “Mercury Retrograde” and assign all sorts of obscure superstitious nonsense to the phenomenon.

Venus the other inner planet moves considerably slower and the chart shows it is still racing away towards its own elongation. Then it too will become retrograde. The outer planets also become retrograde for a short time around the time of their opposition. This is because it is the time when the earth passes them, being faster. Just as cars seem to go

backwards as we pass them, so do the planets. Then once we have gone past they appear to be following us again.

This is a great time of year to take in the glories of the southern sky. The small and large Magellanic clouds appear close to the south pole between the bright stars Achernar and Canopus as two distinct smudges of light. Binoculars are sufficient to make out that these are galaxies distinct from our own Milky Way, and therefore amongst the most distant things you will ever see. Looking at these things is like looking back into the prehistoric past, such is the time span required for their light to reach us.

Seeing something as it was hundreds of thousands of years ago helps me to anchor my tiny but comfortable niche in this incomprehensibly vast random emptiness of the universe, and compels me to keep looking up for the Next Big Thing.

May you also submit to such a salubrious addiction.

Date/Planet	Sun ☉	Moon ☾	Mercury ☿	Venus ♀	Mars ♂	Jupiter ♃	Saturn ♄	Uranus ♅
Thu 10	☀ 05:40am-07:01pm	☾ 02:17pm-12:33am 69%	☿ 03:44am-05:30pm 47%	♀ 02:56am-04:27pm 23%	♂ 02:34am-04:43pm 95%	♃ 07:04am-07:54pm	♄ 05:15am-06:47pm	♅ 11:51am-10:44pm
Fri 11	☀ 05:41am-07:00pm	☾ 03:13pm-01:17am 78%	☿ 03:43am-05:29pm 49%	♀ 02:54am-04:25pm 24%	♂ 02:32am-04:41pm 95%	♃ 07:01am-07:51pm	♄ 05:12am-06:43pm	♅ 11:47am-10:40pm
Sat 12	☀ 05:42am-06:59pm	☾ 04:07pm-02:05am 85%	☿ 03:42am-05:29pm 51%	♀ 02:52am-04:23pm 25%	♂ 02:32am-04:41pm 95%	♃ 06:58am-07:48pm	♄ 05:08am-06:40pm	♅ 11:43am-10:37pm
Sun 13	☀ 05:42am-06:58pm	☾ 04:58pm-02:59am 91%	☿ 03:42am-05:28pm 53%	♀ 02:50am-04:21pm 26%	♂ 02:32am-04:40pm 95%	♃ 06:55am-07:45pm	♄ 05:05am-06:36pm	♅ 11:40am-10:33pm
Mon 14	☀ 05:43am-06:57pm	☾ 05:44pm-03:57am 96%	☿ 03:42am-05:28pm 55%	♀ 02:48am-04:19pm 27%	♂ 02:31am-04:39pm 95%	♃ 06:52am-07:41pm	♄ 05:02am-06:33pm	♅ 11:36am-10:29pm
Tue 15	☀ 05:44am-06:56pm	☾ 06:25pm-04:56am 99%	☿ 03:42am-05:28pm 57%	♀ 02:46am-04:18pm 27%	♂ 02:31am-04:38pm 95%	♃ 06:49am-07:38pm	♄ 04:58am-06:29pm	♅ 11:32am-10:25pm
Wed 16	☀ 05:45am-06:55pm	☾ 07:02pm-05:57am 99%	☿ 03:42am-05:28pm 59%	♀ 02:45am-04:16pm 28%	♂ 02:30am-04:37pm 94%	♃ 06:47am-07:35pm	♄ 04:55am-06:26pm	♅ 11:28am-10:21pm
Thu 17	☀ 05:46am-06:54pm	☾ 07:36pm-06:57am 98%	☿ 03:43am-05:28pm 60%	♀ 02:43am-04:15pm 29%	♂ 02:30am-04:36pm 94%	♃ 06:44am-07:32pm	♄ 04:52am-06:22pm	♅ 11:24am-10:17pm
Fri 18	☀ 05:47am-06:53pm	☾ 08:07pm-07:58am 94%	☿ 03:44am-05:29pm 62%	♀ 02:42am-04:14pm 30%	♂ 02:29am-04:35pm 94%	♃ 06:41am-07:28pm	♄ 04:48am-06:18pm	♅ 11:20am-10:13pm
Sat 19	☀ 05:48am-06:52pm	☾ 08:37pm-08:58am 88%	☿ 03:45am-05:29pm 64%	♀ 02:40am-04:12pm 31%	♂ 02:29am-04:34pm 94%	♃ 06:38am-07:25pm	♄ 04:45am-06:15pm	♅ 11:17am-10:10pm
Sun 20	☀ 05:48am-06:51pm	☾ 09:07pm-10:00am 79%	☿ 03:46am-05:30pm 65%	♀ 02:39am-04:11pm 31%	♂ 02:28am-04:33pm 94%	♃ 06:35am-07:22pm	♄ 04:42am-06:11pm	♅ 11:13am-10:06pm
Mon 21	☀ 05:49am-06:50pm	☾ 09:39pm-11:05am 69%	☿ 03:48am-05:30pm 66%	♀ 02:38am-04:10pm 32%	♂ 02:28am-04:32pm 94%	♃ 06:33am-07:18pm	♄ 04:38am-06:08pm	♅ 11:09am-10:02pm
Tue 22	☀ 05:50am-06:49pm	☾ 10:14pm-12:11pm 58%	☿ 03:49am-05:31pm 68%	♀ 02:37am-04:09pm 33%	♂ 02:27am-04:31pm 94%	♃ 06:30am-07:15pm	♄ 04:35am-06:04pm	♅ 11:05am-09:58pm
Wed 23	☀ 05:51am-06:48pm	☾ 10:54pm-12:11pm 50%	☿ 03:51am-05:31pm 69%	♀ 02:36am-04:08pm 34%	♂ 02:27am-04:30pm 94%	♃ 06:27am-07:12pm	♄ 04:31am-06:01pm	♅ 11:02am-09:54pm



# INDEPENDENT INQUIRY INTO WESTERN POWER AND HORIZON POWER REQUIRED

## MEDIA RELEASE

### Hon MIA DAVIES MLA

The Opposition has recently launched Parliament's first e-petition, calling for an independent inquiry into WA's electricity network, following months of power disruptions which have frustrated families and businesses.

Member for Central Wheatbelt Mia Davies MLA said this summer had been "one of the worst ever" for power delivery throughout regional WA, with thousands of households and businesses losing power multiple times since December.

"Ongoing outages in the Central Wheatbelt are costing small businesses thousands of dollars, harming local tourism opportunities, and leaving residents frustrated and upset.

"The recent heatwaves during

December and January have been particularly difficult for families, who have been unable to run their air-conditioners in 40-degree heat and have lost hundreds of dollars of food due to lack of refrigeration." Ms Davies said.

"The meagre \$80 compensation payment from Western Power does not go far enough, and residents want to see this urgently adjusted to reflect the true cost of restocking households after successive days without power."

The inquiry would go beyond the recent review announced by the State Government and provide an unbiased investigation into Western Power and Horizon Power.

The State Government's review is constrained to a four-day window from December 24 to 28, It goes nowhere near far

enough in addressing the ongoing power reliability regional residents have been struggling with for several years.

"An independent inquiry would consider the preparedness and responsiveness of electricity providers when power outages occur, the appropriateness of the extended outage payment, and make recommendations to improve the performance of the regional electricity network." said Ms Davies.

Shadow Minister for regional telecommunications and emergency services Martin Aldridge MLC said the inquiry would also consider existing policies aimed at improving fire risks associated with the network and their impact on timely power reconnection.

"Telecommunications in regional WA is critical, especially during natural

disasters or emergencies when the delivery of critical information from government agencies is required," Mr Aldridge said.

"Inquiries into the Esperance Bushfires and the 2019-20 Black Summer bushfires highlighted how vulnerable our networks are to power loss and why we need to develop a plan to strengthen the network.

"Disappointingly, Telstra and other telecommunications providers have taken very little action to improve network resiliency, leaving regional communities vulnerable and exposed during emergencies, unable to call for help or mobilise fire crews."

Go to website to sign the Petition <https://www.parliament.wa.gov.au/Parliament/LCePetitions.nsf/petitions/22-0002>

## FEBRUARY IS OVARIAN CANCER AWARENESS MONTH

During February's Ovarian Cancer Awareness Month, we are urging women to remain ever vigilant, as ovarian cancer symptoms are vague and women often think they are caused by other conditions and may ignore them.

Our Cancer Prevention and Research Director, Melissa Ledger, said that women should pay attention to any symptoms that are unusual for you, new, persistent, or troublesome.

"If you have any of the symptoms and they happen on most days for three weeks or more, particularly if you're over 50 or have a strong family history of breast or ovarian cancer, go to your doctor and get a check-up," Ms Ledger said.

"You won't be wasting the doctor's time, and in most cases

it won't be anything to worry about, but if it is cancer and you find it early, your chances of successfully treating it are much greater."

Because it's difficult to detect in its early stages, there are more deaths from ovarian cancer in Australia than any other gynaecological cancer.

### Ovarian cancer statistics

- The chances of a woman developing ovarian cancer by the time she is 75 is 1 in 161
- Ovarian cancer is more common in women over 50
- In 2017, 115 West Australian women were diagnosed with ovarian cancer
- In 2017, 94 West Australian women died from ovarian cancer

Ovarian cancer can be difficult

to diagnose in its early stages as symptoms can be non-specific or similar to those of other diseases.

Ovarian cancer symptoms include:

- a swollen, bloated abdomen
- pressure, discomfort or pain in the abdomen
- heartburn, nausea and bloating
- changes in toilet habits (e.g. constipation, diarrhoea, frequent urination due to pressure, increased flatulence)
- tiredness and loss of appetite
- unexplained weight loss or weight gain
- changes in your menstrual pattern or postmenopausal bleeding

- pain during sex
- More research is required to better understand the causes of ovarian cancer, but there are steps you can take to reduce your overall risk of cancer.

Steps to reduce risk of cancer: Quitting smoking; Being SunSmart; maintaining a healthy body weight; being active; eating plenty of fruit and vegetables; reduce alcohol consumption; and participating in cancer screening programs.

For more information Find out more about ovarian cancer.

Call our 13 11 20 cancer information and support line.

# NANGEENAN MATTERS

By JULIE TOWNROW

Another year is done and dusted and we are already into the second month of the new year.

The heat has been relentless, so not venturing too far from the house, with the exception of taking the trailer to Perth to deliver scrap metal and pick up bottles and cans, duly de-capped, squashed sorted and bagged in an effort to keep growing the Hall Account.

I am excited to report, we have a brand spanking new, bright and shiny power pole in the south west corner of the yard.

I was due to meet with Frank in Perth but with the Omicron variant starting to take hold, the reason to have non-essential visitors could limit

staff due to possible requirement to isolate, so while I am exceptionally passionate about the Hall, it's just a matter of time, but it will happen.

We have received a report from a Structural inspection, conducted on 29 December and it's pleasing to note the footings are sound, but recommends that a water management system be applied in remediation works to keep the base of the building as dry as possible.

A general 'Scope of Works' to form tender documents is in the process. The Structural Report has assisted greatly in the re-arranging of priorities, but also highlights the enormity of the task at hand.

Thanks to Grant Bennett who has been available to help me,

at short notice, with the heavy lifting.

My Dad had so many little gem quotes and one that comes to mind is 'Any job, starts at the beginning and finishes at the end' reminding me the time in the middle doesn't matter.

So at this stage, we are back at the drawing board, to create a plan about what, why and how, so to speak, do it once and do it right, so the Hall, can sustain itself for future generations.

Having the privilege to take the Njaka Njaka Bus tour on Australia Day and listen to Mick Hayden speak of his families past stories and the passing of history from one generation to the next, seeing the land marks and how the elders recorded their presence on the land so the future generational

footsteps could follow, while different, it's the same and again we are reminded that our opinion may differ, our beliefs may be based on these opinions, and while we may value different things, the value is still the same, the respect for our forefathers and our elders, who made and shared their learning, to "Grow Up" (in Mick's terms), our youngen's, to mentor our future generations makes my passion for the Hall "Our Place " even more significant. While our opinion of Australia Day may differ, I am so proud that we are able to live in a very diverse multi cultural country, and while it may not be perfect, history shows that "Tolerance is the oil which takes the friction out of Life".

## WHEATBELT IN A SNAP

Two fires tore through the Wheatbelt on Sunday 6 February as catastrophic fire conditions throughout the region brought gusty winds and temperatures over 40 degrees Celsius.

Fires were burning in the Shires of Quairading, Bruce Rock,

Corrigin, Kondinin and Kulin, with over 100 firefighters and local farmers battling the blazes.

The bushfires came after two other major fires destroyed homes in southern WA on Saturday in Denmark and Bridgetown.



Corrigin—Photo ABC Perth



Corrigin—Photo ABC South West



Bruce Rock—Photo Leigh Strange

### HOW FIREPROOF IS YOUR PLAN?

90% of WA is bushfire prone. Bushfires are dangerous and happen every year. The single biggest killer is indecision.

What will you do if there is a bushfire near you?

A bushfire plan can help keep you and your family safe. Create one now in under 15 minutes.



### Download My Bushfire Plan App

Access your bushfire plan anytime - even without an internet connection.



# PROTECT YOUR PERSONAL INFORMATION FROM CYBERCRIMINALS

BY AUSTRALIAN CYBER SECURITY CENTRE

Portable devices such as laptops and smartphones have become an essential part of our everyday life, and with Christmas just passed, we may find ourselves with new devices.

Although our portable devices are convenient, they are also a key target for cybercriminals as they can contain sensitive or personal information.

To avoid cybercriminals compromising valuable information, it is important your staff and customers secure their devices and know how to stay secure online.

## Why should your business secure its portable devices?

We use our portable devices for things such as business banking, emails to customers, shopping – all of which involve sensitive or personal information.

The consequences of a cybercriminal gaining access to your devices and the

information can pose a security risk to not only your business, but also your customers.

## What can you do?

Locking your portable devices with a passphrase, password, PIN or regularly backing up your files are some of the simple steps you can take to protect your device.

The ACSC's Quick Wins for Your Portable Devices provides further advice on how you can best secure your portable devices from cybercriminals. For more information, go to [cyber.gov.au/secureportabledevices](http://cyber.gov.au/secureportabledevices).

## Get social

We've developed a range of resources to make it easy for your organisation to get involved including social media tiles, posters, guides and flyers.

Please download the content from our website. <https://www.cyber.gov.au/partner-hub/cyber-security-campaign-resources>

**Cyber security first:**  
8 ways to protect your business online

VISIT [CYBER.GOV.AU](http://CYBER.GOV.AU)

ACSC

**Roll up for WA**  
COVID-19 Vaccination

COVID-19 VACCINE

THE CUMMINS THEATRE & WHISKEY & BOOTS PRESENTS

# MAMA STITCH

STORIES ABOUT MUMS FROM THE COMMUNITY OF MERREDIN

We are delighted to be seeking stories from the community of Merredin about their Mums. If you are keen to share stories about your relationship with your mother, please contact:

Meg Gethin  
Ph: 0428 128 153  
Em: [megethin@gmail.com](mailto:megethin@gmail.com)

Whiskey & Boots use storytelling, headphone verbatim and music and invite audiences to listen, reflect and celebrate their maternal line.

"I have not stopped telling people what an awesome experience it was!"

- Annette Peterson - Participant Joondalup

stories - music - toast

Department of Local Government, Sport and Cultural Industries | WB WHISKEY & BOOTS | CUMMINS THEATRE | TOWN OF MERREDIN

# TWILIGHT MARKETS

Friday 25th February 2022  
5 pm - 8 pm  
Merredin CRC  
CNR Barrack & Queen Streets  
Food - Stalls - Entertainment

**For more information or to book a stall**

- 9041 1041
- [administration4@merredincrc.com](mailto:administration4@merredincrc.com)
- [Merredincrc.com](http://Merredincrc.com)
- Merredin Community Resource Centre

"Meet me at the markets!"

MERREDIN MEN'S SHED

Merredin Community Resource Centre  
Your local connection

MERREDIN SHOW | Merredin IGA

Positions Vacant

# Aged Care clinical staff wanted

Catholic Homes has been providing aged care for over 50 years in Western Australia and are looking for people to join our Home Care team.



We are looking for caring and passionate clinical staff for our aged care residences and home care services across Western Australia.

Our Care with Purpose people-centred care model promotes dignity, respect, privacy and independence.

As a not-for-profit organisation, we are inclusive and welcome

all faiths and backgrounds.

We offer competitive hourly rates, casual loading and superannuation.

We have both permanent and casual roles available now.

*If you would like to discuss further call 1300 244 000 or email your CV to [homecare@catholichomes.com](mailto:homecare@catholichomes.com)*



*care with purpose*

CATH0249

**Here in the Wheatbelt  
we LOVE our sport**

CONTRIBUTE BY EMAILING PHOTOS AND ARTICLES TO  
[ADMINISTRATION@MERREDINCRC.COM](mailto:ADMINISTRATION@MERREDINCRC.COM)

## Basketball

3<sup>rd</sup> February 2022

Under 12 Girls

Orange (52) d. White (14)

Royal Blue (16) d. Lime Green (11)

Under 12 Boys

Yellow (22) d. Green (20)

Red (20) d. Sky Blue (7)

Light Grey (14) draw Black (14)

Under 16 Girls

Lilac (35) d. Lime Green (26)

White (42) d. Sky Blue (20)

Under 16 Boys

Royal Blue (27) d. Light Grey (26)

Orange (53) d. Yellow (30)

Red (46) d. Black (18)

Pink (44) d. Green (15)

# Seeking Expressions of interest

## Truck licence HR - HC - MC

## March 2022

## Call 9041 1041

Merredin  
Community Resource Centre



# Horoscopes



**ARIES 21 March—19 April**  
Good time to join someone who'd benefit from your determination to get a plan off the ground.



**TAURUS 20 April-26 May**  
You're in good mental space to revisit an issue that previously left you emotionally depleted.



**GEMINI 21 May-20 June**  
Good time to look at further education or a group project to broaden your experiences.



**CANCER 21 June-22 July**  
The focus is still on others and events that may take you away from home and your comfort zone.



**LEO 23 July-22 August**  
It is a good time to commit to a relationship and join your partner as they reach out to achieve a dream.



**VIRGO 23 August-22 September**  
Working cohesively with your colleagues will help you achieve success.



**LIBRA 23 September-22 October**  
You will see positive achievements across all areas of your life including innovative teamwork.



**SCORPIO 23 October-21 November**  
With a bit of extra effort, you will be coming near a long worked on project.



**SAGITTARIUS 22 November-21 December**  
You need to focus on getting rid of debts and projects that lose you money.



**CAPRICORN 22 December-19 January**  
By month end, you will be able to put into action a plan that has been delayed since January.



**AQUARIUS 20 January-18 February**  
You tend to overthink about things. You need to ground yourself and be realistic about life.



**PISCES 19 February-20 March**  
Wonderful time for you, where you come up with new creative ideas to change how you usually do things.

# CLASSIFIEDS

## Positions Vacant



**HIRING**  
for  
**IMMEDIATE START**

**Parts Interpreter**

at our

**Edna May Operations**

5 and 2 / 4 and 3 roster  
(9 day fortnight)

**Contact us for more information**

Jobs@mlgoz.com.au  
(08) 9022 7746



**HIRING**  
for  
**IMMEDIATE START**

**Tyre Fitter**

**Edna May Operations**

Local applications encouraged  
7 & 7 even time, family friendly roster

**\*\*Up to \$8 client based site allowance\*\***  
on top of hourly rate

**Contact us for more information**

Jobs@mlgoz.com.au  
(08) 9022 7746



**HIRING**  
for  
**IMMEDIATE START**

**Parts Interpreter**

at our

**Edna May Operations**

5 and 2 / 4 and 3 roster  
(9 day fortnight)

**Contact us for more information**

Jobs@mlgoz.com.au  
(08) 9022 7746

**JOIN OUR AMAZING TEAM!**



**WE ARE LOOKING FOR**

**Administration Officer - Part Time**  
(Level 1)

**Administration Officer - Part Time**  
(Level 4)

**Applications close Friday 18**

**February @ 4 pm**

Position descriptions and  
criteria available!

✉ merredin@crc.net.au

Just email, call or come in  
and see us!

📞 9041 1041

📍 110 Barrack Street



**St Mary's School  
Merredin**

**Gardener Required**

If you have the ability to do general gardening maintenance, maintain the school oval and grounds, please email the Principal – Adriana Coniglio at

adriana.coniglio@cewa.edu.au

Applicant must be able to show proof of vaccination and to obtain a Working With Children's Card.

**FIND THE RIGHT  
PERSON FOR THE JOB  
BY ADVERTISING IN  
THE PHOENIX**



# CLASSIFIEDS

## Positions Vacant



### FULL TIME POSITION AVAILABLE

Merredin Freightlines are currently seeking an **MC Operator**

Driver will be based out of Merredin depot

All applicants please email resume to [merredinfreightline@bigpond.com](mailto:merredinfreightline@bigpond.com) or call 08 9041 3444



### ADMINISTRATION CASUAL/PART-TIME/FULL-TIME POSITION AVAILABLE

Merredin Freightlines are currently seeking

An enthusiastic and reliable member to add to our Administration Team.

The applicant will have exceptional administration and communication skills.

Based in our Merredin depot, hours 8.30am to 4pm.

All applicants please email resume to [merredinfreightline@bigpond.com](mailto:merredinfreightline@bigpond.com) or call 08 9041 3444



Great Southern Fuels require the services of a full time tanker driver based in our Merredin Depot. HC or MC and Dangerous Goods licence required, but DG is not essential on application.

Applications and inquiries to David Haines 0417 344 319 [david.haines@gsfs.com.au](mailto:david.haines@gsfs.com.au)

Or call in and drop a resume off to

Great Southern Fuels  
3 Gamenya Avenue PO Box 221 Merredin 6415



## WHEATBELT EQUIPMENT

Position Vacant:

### Ag Apprentice 3<sup>rd</sup> or 4<sup>th</sup> Year

Wheatbelt Equipment Merredin's new JCB, Goldacres & Marshall Dealer are recruiting for an Ag Apprentice to commence early 2022.

Preference will be given to a suitable candidate who is part the way through their Trade.



Come and join a family friendly local business and grow with us

Apply to Don Laidlaw on  
(08) 6014 6000 or 0408 220 907  
[don@wheatbelteq.com.au](mailto:don@wheatbelteq.com.au)



**Find the right person for the job.  
Advertise your vacant position here.  
Call 9041 1041.**



We are still in need of rentals for our tenant base. If you would like more information about leasing your property - Contact us and we would be more than happy to help!  
[info@asktonym.com.au](mailto:info@asktonym.com.au) / 08 9574 2917

## FOR SALE



### FOR SALE—175 HAWKER WAY \$269,000

Fantastic 4 bedroom, 2 bathroom family home.

Features a separate theatre room, open plan kitchen, dining family room and even a bar room leading to the alfresco area.

Outside is a fully fenced yard with a 7m x 6m shed with rear yard access

This home is well worth viewing at this price.

Do yourself a favour and call Sharon Johnson on 0448 108 545 to discuss a viewing or details!



### FOR SALE—12 KITCHENER RD \$215,000

4 bedroom, 1 bathroom 1920's home, featuring high ceilings, large rooms, renovated kitchen and bathroom.

Set on a 1377m<sup>2</sup> block and within walking distance of the Merredin hospital.

Garage to rear with access from the main driveway.

Do yourself a favour and call Sharon Johnson on 0448 108 545 to discuss a viewing or details!



### FOR SALE—30 GOLF ROAD—\$450,000

4 bedroom, 2 bathroom 2 storey double brick home. Theatre room, 2 x lounge rooms. Renovated kitchen and bathroom.s. Spa and shed outside.

Book your viewing soon as this one needs to be seen to be appreciated!!

Do yourself a favour and call Sharon Johnson on 0448 108 545 to discuss



Phone - (08) 9041 6510

Fax - (08) 9041 6555

www.elders.com.au/merredin

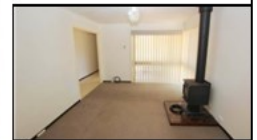
Will Morris 0448 415 537  
 Jacqui Burton 0498 457 539  
 william.morris@elders.com.au  
 jacqui.burton@elders.com.au

**PRICE:** \$182,500  
**AGENT:** Elders Real Estate Merredin  
**CONTACT:** Will Morris 0448 415 537  
**Elders Property ID:** 23312275

\*\*\*Reduced now \$182,500\*\*\* This former Government owned property presents a tidy first home buyer or first time investor opportunity. Well priced - solid - neat and tidy brick and colour-bond home boasting 3 bedrooms, 1 bathroom, formal lounge with tile fire that opens onto the kitchen/dining room, separate WC, internal laundry and enclosed original garage is now a games room with steps down off dining space. Ducted evaporative A/C cooling. Gas oven cooking and gas instant HWS. Space for a dishwasher. Solar PV energy system on roof to keep the power bills down. Big block of 1179m2 total land area. Secure yard and side gates for back yard access to newly built 6m x 6m double roller door garage shed. Investors could expect a minimum rental return of \$300 per week or upwards. Owners have just moved out and now is ideal time to buy for both owner occupiers or investors.

All inquiries to exclusive selling agents - Team SOLD - Elders Real Estate, phone local specialists Jacqui Burton 0498 457 539 or Will Morris 0448 415 537 to arrange your private inspection.

## 11 Solomon Street, MERREDIN



3



Beds

1



Bath

4



Parking

## 5 Cummings Crescent, MERREDIN

**\$345,000 WEB ID 23322139**

Built in 2005 on a 752 square metre corner block this house is in a great location. There is a formal lounge at the entrance with tiled floor and feature ceiling fan. The bright kitchen is well appointed with stainless steel appliances and an island bench breakfast bar overlooking the meals and living area which flows onto the outdoor entertaining area. The master bedroom has an ensuite and walk in robe while all other bedrooms are down the hall with the second bathroom, laundry and access to the carport UMR. There is vehicle access to the rear through double gates.



## 1-3-5 Hay Street, MERREDIN

**\$150,000 WEB ID 23314952**

Calling all developers looking to build either residential homes or tourist development. The massive demand for rental accommodation of both short stay and long term is only getting bigger. These three freehold green title blocks are residential zoned but have Local Planning Scheme No.6 - Amendment No.6 discretionary approval allowing for tourist development. Ideal for building of group accommodation for large corporate companies or motel operators. Sale price of \$150,000 works out to \$50,000 per quarter acre block.



## 77 Whitfield Way, MERREDIN

**\$600,000 - WEB ID 23307113**

Situated on almost three acres this stunning family home has so much to offer. Built in 2009 with 4 bedrooms, 2 bathrooms plus a study or 5th bedroom and home theatre. The well appointed kitchen with 900mm cooker is enormous and overlooks the equally large lounge and dining rooms. Jarrah flooring to living areas, fully ducted reverse cycle air conditioning and a 5.2KW twin inverter solar PV system to keep the bills down. Large 64m2 gable patio for outdoor entertaining and 6m x 9m colourbond shed. Well fenced boundary and back yard, plenty of room for a pony or two!



## 2 Alfred Street, MERREDIN

**High \$200K's - WEB ID 23313977**

This recently renovated home is situated on a large 1905m2 block. The well appointed kitchen has tonnes of bench space and a large island/breakfast bar overlooking the dining or family room. The master bedroom has a WIR and modern ensuite with free standing bath and the 3 other bedrooms are tastefully decorated for the kids. Wrap around veranda's keep the weather off this home with double entry doors into the cozy lounge with wood fire and a large patio for entertaining at the rear of the home. The house and gardens are well fenced providing privacy.

